

PUNARNAVA TABLETS

Monograph No. – 2700194 ver 3.0

Issue No: 03

Date of Issue: 20/02/2026

Text Reference: API Part I, Volume I, Monograph No. 60

Amendment No : 00

Amendment Date : --

Shelf Life: 3 years

Description

Cream to light brown color caplet shape coated tablets having SDL mark on one side.

Loss on Drying at 105°

Not more than 7 % w/w

Friability

Not more than 1 % w/w

Disintegration Time

Not more than 60 min.

Hardness

Not less than 2 kg/cm²

Thickness

5.5 ± 0.5 mm

Length

17.5 ± 0.5 mm

Average Weight

670 mg ± 5 %

Uniformity of weight

Not more than 2 tablets deviate by more than 5% of the Average Weight and none by more than 10% of the Average Weight.

Ash

Not more than 19.0 % w/w

Acid insoluble ash

Not more than 3.5 % w/w

Water soluble extractive

Not less than 16.0 % w/w

Alcohol soluble extractive

Not less than 4.5 % w/w

pH (1 % Aq. Solution)

5.5 – 7.5

Thin Layer Chromatography Solvent system

Toluene : Ethyl acetate : Formic acid : Methanol
(3 : 3 : 0.8 : 0.2)

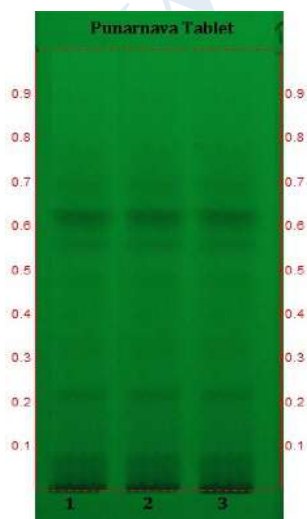
Details

Solvent of Extraction – Methanol

Solvent front – 90 mm

Total No. of Major spots – 3

Visualization – Under UV at 254 nm

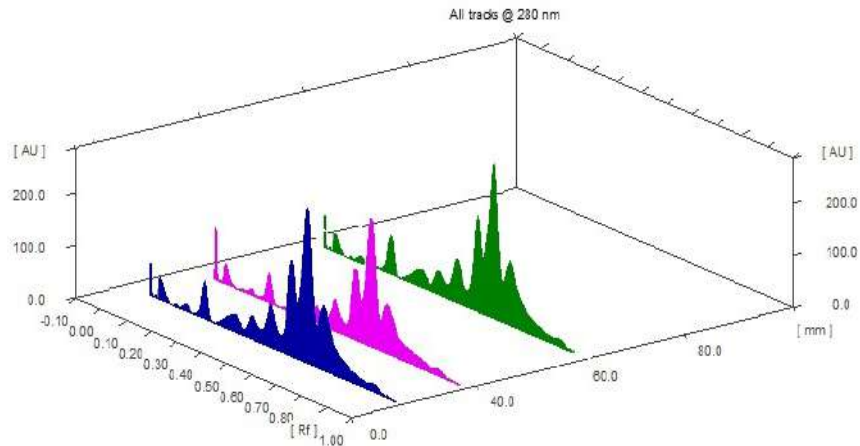


Major Spots	Colour	Approx. Rf.
1	Light gray	0.06
2	Light gray	0.57
3	Gray	0.63



Confidential - photocopy prohibited

Note : † : These extra tests can be performed on every batch at extra cost. Tests can be ascertained on request.

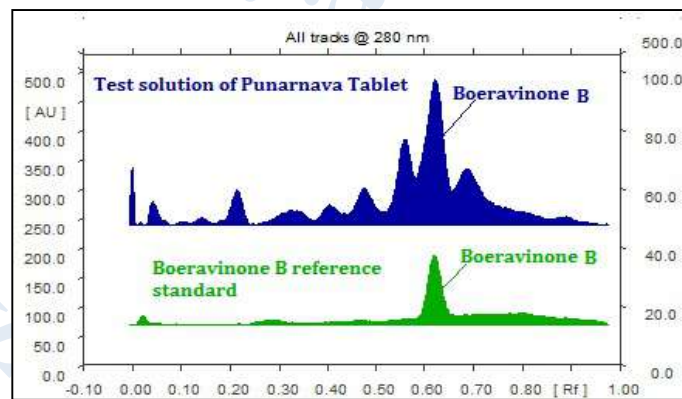
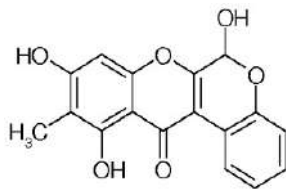


3D Peak Display of Punarnava Tablets at 280 nm

HPTLC Profile[†]

i) Boeravinone

When examined in the range of 200 nm to 400 nm, the test solution shows absorption maxima at about 280 nm for Boeravinone B corresponding with Boeravinone B reference standard.



Heavy metal

Lead (Pb)	Not more than 10 ppm
Mercury (Hg)	Not more than 1 ppm
Arsenic (As)	Not more than 3 ppm
Cadmium (Cd)	Not more than 0.3 ppm
<i>E. coli</i>	Absent/g
<i>P. aeruginosa</i>	Absent/g
<i>Salmonella sp.</i>	Absent/g
<i>Staphylococcus sp.</i>	Absent/g
Total Microbial plate Count (TPC)	Not more than 10 ⁵ c.f.u./g
Total Yeast & Mould count (TYMC)	Not more than 10 ³ c.f.u./g
Pesticide Residue[†] (OC+OP)	Complies as per API
Aflatoxins B1,B2,G1,G2[†]	Complies as per API

Confidential - photocopy prohibited

Note : [†] : These extra tests can be performed on every batch at extra cost. Tests can be ascertained on request.