

## JAMBHU (JAMUN) TABLETS

Monograph No. – 2700294 ver 3.0

Issue No: 03

Amendment No : 00

Date of Issue: 19/09/2024

Amendment Date : --

Text Reference: API Part I, Volume II, Monograph No. 25

Shelf Life: 3 years

### Description

Brown to dark brown color caplet shape coated tablets having SDL mark on one side.

### Loss on Drying at 105°

Not more than 7 % w/w

### Friability

Not more than 1 % w/w

### Disintegration Time

Not more than 60 min.

### Hardness

Not less than 2 kg/cm<sup>2</sup>

### Thickness

5.2 ± 0.5 mm

### Length

17.5 ± 0.5 mm

### Average Weight

670 mg ± 5 %

### Uniformity of weight

Not more than 2 tablets deviate by more than 5% of the Average Weight and none by more than 10% of the Average Weight.

### Ash

Not more than 20 % w/w

### Acid insoluble ash

Not more than 5 % w/w

### Water soluble extractive

Not less than 18.5 % w/w

### Alcohol soluble extractive

Not less than 4.5 % w/w

### pH (1 % Aq. Solution)

5.0 – 7.0

### Thin Layer Chromatography Solvent system

Chloroform : Ethyl acetate : Glacial acetic acid  
( 5 : 4 : 1.6 )

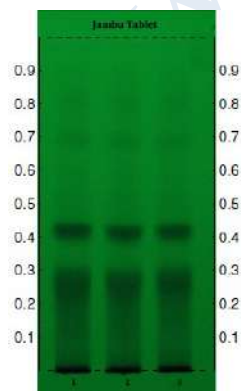
### Details

Solvent of Extraction – Methanol

Solvent front – 90 mm

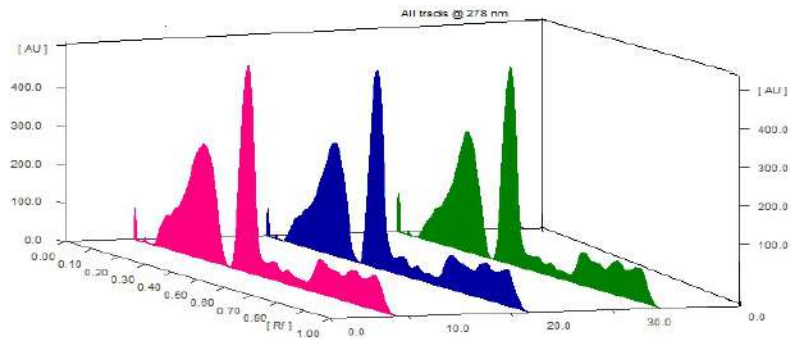
Total No. of Major spots – 4

Visualization – Under UV at 254 nm



Major Spots	Colour	Approx. Rf.
1	Black	0.28
2	Black	0.43
3	Light gray	0.69
4	Light gray	0.80



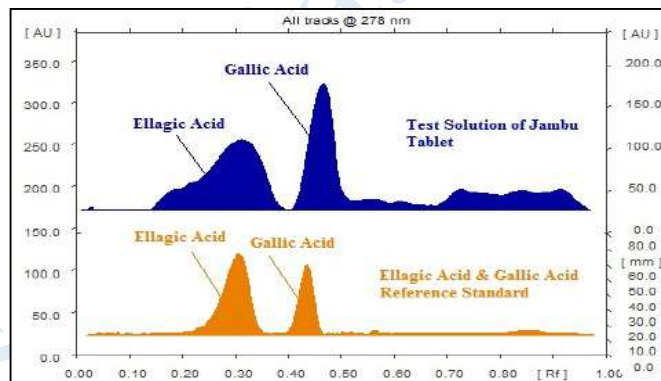
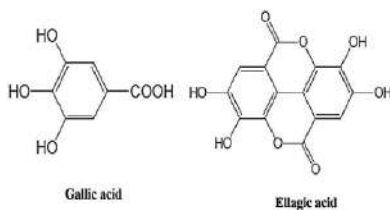


**3D Peak Display of Jambhu (Jamun) Tablets at 278 nm**

### HPTLC Profile<sup>†</sup>

#### i) Total Polyphenols (as Gallic acid & Ellagic acid)

When examined in the range of 200 nm to 400 nm, the test solution shows absorption maxima at about 290 nm for Gallic acid & 278 nm for Ellagic acid corresponding with Gallic acid & Ellagic acid reference standard.



### Heavy metal

<b>Lead (Pb)</b>	Not more than 10 ppm
<b>Mercury (Hg)</b>	Not more than 1 ppm
<b>Arsenic (As)</b>	Not more than 3 ppm
<b>Cadmium (Cd)</b>	Not more than 0.3 ppm

***E. coli*** Absent/g

***P. aeruginosa*** Absent/g

***Salmonella sp.*** Absent/g

***Staphylococcus sp.*** Absent/g

**Total Microbial plate Count (TPC)** Not more than 10<sup>5</sup> c.f.u./g

**Total Yeast & Mould count (TYMC)** Not more than 10<sup>3</sup> c.f.u./g

**Pesticide Residue<sup>†</sup> (OC+OP)** Complies as per API

**Aflatoxins B1,B2,G1,G2<sup>†</sup>** Complies as per API