

## HARIDRA TABLETS

Monograph No. – 2700234 ver 3.0

Issue No: 03

Date of Issue: 23/02/2026

Text Reference: API Part I, Volume I, Monograph No. 30

Amendment No : 00

Amendment Date : --

Shelf Life: 3 years

### Description

Yellowish brown to light brown color caplet shape coated tablets having SDL mark on one side.

### Loss on Drying at 105°

Not more than 8 % w/w

### Friability

Not more than 1 % w/w

### Disintegration Time

Not more than 60 min.

### Hardness

Not less than 2 kg/cm<sup>2</sup>

### Thickness

5.0 ± 0.5 mm

### Length

17.7 ± 0.5 mm

### Average Weight

672 mg ± 5 %

### Uniformity of weight

Not more than 2 tablets deviate by more than 5% of the Average Weight and none by more than 10% of the Average Weight.

### Ash

Not more than 11.0 % w/w

### Acid insoluble ash

Not more than 1.5 % w/w

### Water soluble extractive

Not less than 19.0 % w/w

### Alcohol soluble extractive

Not less than 6.0 % w/w

### pH (1 % Aq. Solution)

5.0 – 6.5

### Thin Layer Chromatography Solvent system

Chloroform : Ethanol : GAA  
( 9.4 : 0.5 : 0.1 )

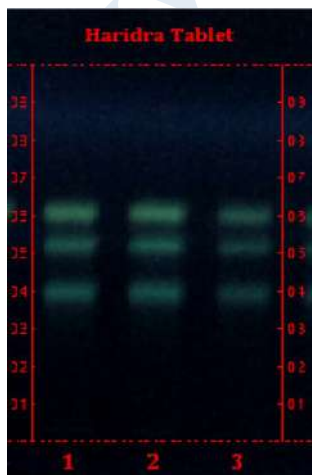
### Details

Solvent of Extraction – Ethanol

Solvent front – 60 mm

Total No. of Major spots – 3

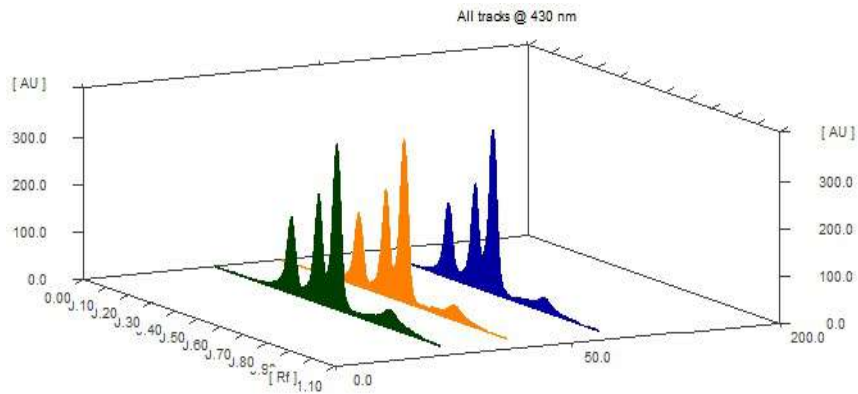
Visualization – Under UV at 366 nm



Major Spots	Colour	Approx. Rf.
1	Yellow	0.40
2	Yellow	0.52
3	Yellow	0.61

**Confidential - photocopy prohibited**

Note : † : These extra tests can be performed on every batch at extra cost. Tests can be ascertained on request.

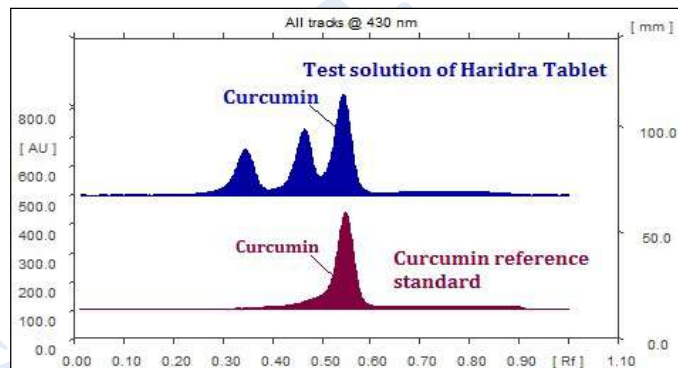
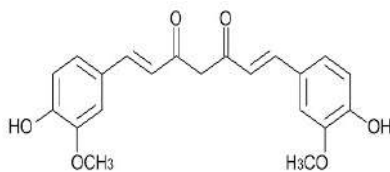


**3D Peak Display of Haridra Tablets at 430 nm**

## HPTLC Profile<sup>†</sup>

### i) Curcumin

When examined in the range of 400 nm to 700 nm, the test solution shows absorption maxima at about 430 nm corresponding with Curcumin reference standard.



## Heavy metal

<b>Lead (Pb)</b>	Not more than 10 ppm
<b>Mercury (Hg)</b>	Not more than 1 ppm
<b>Arsenic (As)</b>	Not more than 3 ppm
<b>Cadmium (Cd)</b>	Not more than 0.3 ppm
<b><i>E. coli</i></b>	Absent/g
<b><i>P. aeruginosa</i></b>	Absent/g
<b><i>Salmonella sp.</i></b>	Absent/g
<b><i>Staphylococcus sp.</i></b>	Absent/g
<b>Total Microbial plate Count (TPC)</b>	Not more than 10 <sup>5</sup> c.f.u./g
<b>Total Yeast &amp; Mould count (TYMC)</b>	Not more than 10 <sup>3</sup> c.f.u./g
<b>Pesticide Residue<sup>†</sup> (OC+OP)</b>	Complies as per API
<b>Aflatoxins B1,B2,G1,G2<sup>†</sup></b>	Complies as per API

**Confidential - photocopy prohibited**

Note : <sup>†</sup> : These extra tests can be performed on every batch at extra cost. Tests can be ascertained on request.