

## CHITRAKADI GUTIKA

Monograph No. – 0500124 ver 3.0

Issue No: 03

Date of Issue: 06/07/2024

Text Reference : Ayurvedic Formulary of India, Part-1/12:11

Amendment No : 01

Amendment Date : 01/07/2025

Shelf Life: 5 years

### Description

Grayish brown to brown colour, round biconvex coated tablet having SDL mark on one side.

### Loss on Drying at 105°

Not more than 7 % w/w

### Friability

Not more than 1 % w/w

### Disintegration Time

Not more than 60 min.

### Hardness

Not less than 2 kg/cm<sup>2</sup>

### Thickness

5.0 ± 0.5 mm

### Diameter

8.0 ± 0.5 mm

### Average Weight

305 mg +/- 5%

### Uniformity of weight

Not more than 2 tablets deviate by more than 5 % of the average weight and none by more than 10 % of the average weight.

### Ash

Not more than 61 % w/w

### Acid insoluble ash

Not more than 5 % w/w

### Water soluble extractive

Not less than 32 % w/w

### Alcohol soluble extractive

Not less than 7 % w/w

### pH (1 % Aq. Solution)

5.5 - 6.5

### Elemental Assay

#### Chloride

Not less than 52.3 mg/tablet

### Thin Layer Chromatography Solvent system

Toluene : Ethyl Acetate  
( 7 : 3 )

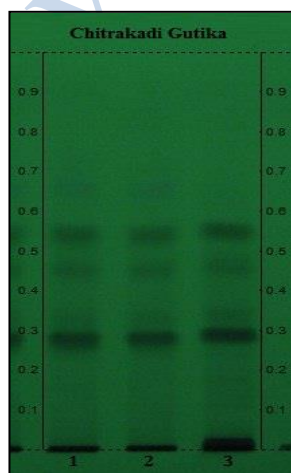
### Details

Solvent of Extraction – Methanol

Solvent front – 90 mm

Total No. of Major spots – 4

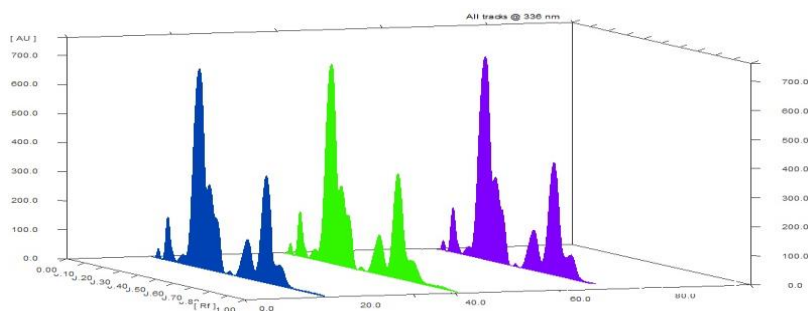
Detection – Under UV at 254 nm



Major Spots	Colour	Approx. Rf.
1	Black	0.29
2	Light gray	0.33
3	Gray	0.46
4	Black	0.55

Confidential - photocopy prohibited

Note : <sup>†</sup> : These extra tests can be performed on every batch at extra cost. Tests can be ascertained on request.



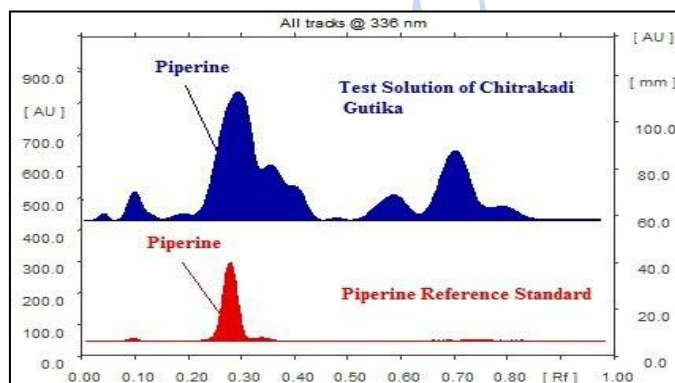
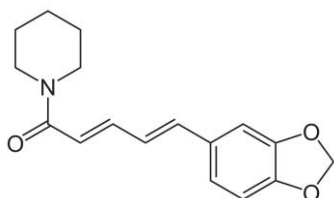
**3D Peak Display of Chitrakadi Gutika at 336 nm**

## HPTLC Profile<sup>†</sup>

### i) Piperine

Not less than 0.25 mg/tablet

When examined in the range of 200 nm to 400 nm, the test solution shows absorption maxima at about 336 nm corresponding with Piperine standard.



***E. coli***

Absent/g

***P. aeruginosa***

Absent/g

***Salmonella sp.***

Absent/g

***Staphylococcus sp.***

Absent/g

**Total Microbial plate count (TPC)**

Not more than  $10^5$  c.f.u./g

**Total Yeast & Mould count (TYMC)**

Not more than  $10^3$  c.f.u./g

**Pesticide Residue<sup>†</sup> (OC+OP)**

Complies as per API

**Aflatoxins B1,B2,G1,G2<sup>†</sup>**

Complies as per API