

SWAMALA CLASSIC SF

Monograph No. – 070380 ver 3.0

Issue No: 03

Date of Issue: 03/10/2024

Text Reference : Ayurvedic Proprietary Medicine

Amendment No : 00

Amendment Date : --

Shelf Life: 3 years

Description

Brown to Chocolate brown semi-solid mass with sour and astringent taste.

Loss on Drying at 105°

Not more than 50 % w/w

Ash

Not more than 2 % w/w

Acid Insoluble Ash

Not more than 1 % w/w

Water soluble Extractive

Not less than 25 % w/w

Alcohol soluble Extractive

Not less than 25 % w/w

pH (1% aqueous solution)

3.0 – 5.0

Elemental Assay

Gold (Au)

Not less than 0.08 mg/10 g

Iron (Fe)

Not less than 5.00 mg/10 g

Calcium (Ca)

Not less than 4.00 mg/10 g



Thin Layer Chromatography

Solvent system

Chloroform : Ethyl acetate : Formic acid
(5 : 4 : 1.6)

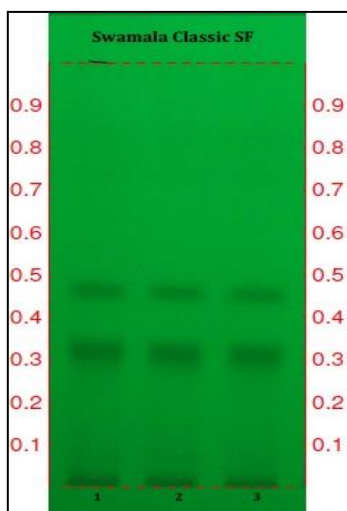
Details

Solvent of Extraction – Methanol

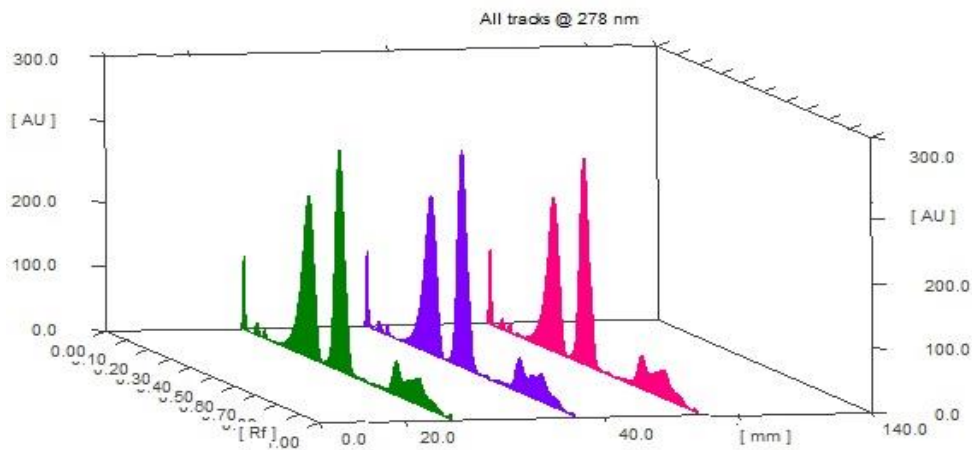
Solvent front – 90 mm

Total No. of Major spots – 2

Detection – Under UV at 254 nm



Major Spots	Colour	Approx. Rf.
1	Gray	0.32
2	Gray	0.46

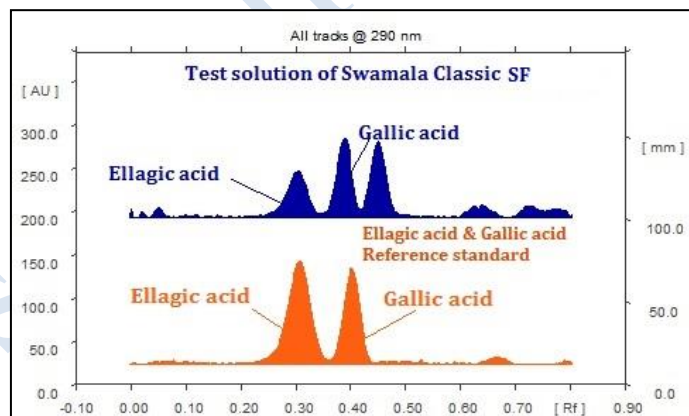
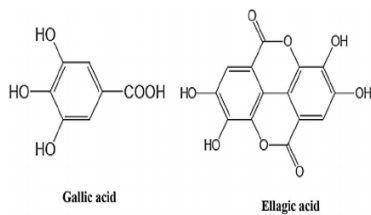


3D Peak Display of Swamala Classic SF at 278 nm

HPTLC Profile †

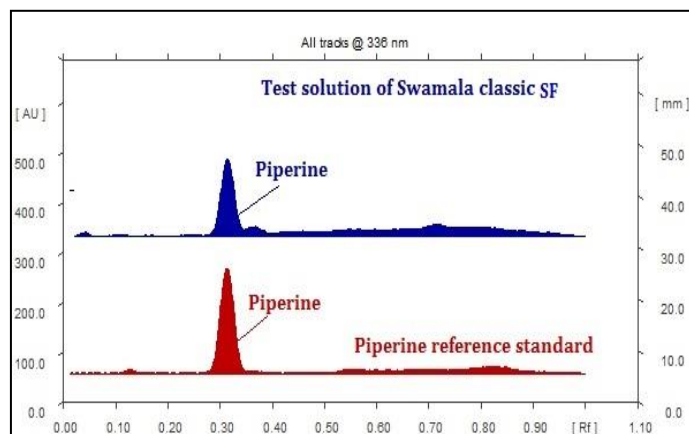
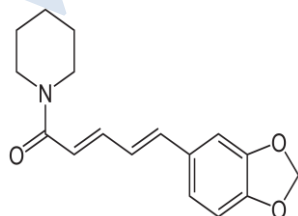
i) Total Polyphenols (as Gallic acid & Ellagic acid)

When examined in the range of 200 nm to 400 nm, the test solution shows absorption maxima at about 290 nm for Gallic acid & 278 nm for Ellagic acid corresponding with Gallic acid & Ellagic acid standard.



ii) Piperine

When examined in the range of 200 nm to 400 nm, the test solution shows absorption maxima at about 336 nm corresponding with piperine standard.



Confidential - photocopy prohibited

Heavy metal

Lead (Pb)	NMT 10 ppm
Mercury (Hg)	NMT 1 ppm
Arsenic (As)	NMT 3 ppm
Cadmium (Cd)	NMT 0.3 ppm

E. coli Absent/g

P. aeruginosa Absent/g

Salmonella sp. Absent/g

Staphylococcus sp. Absent/g

Total Microbial plate count (TPC) NMT 10⁵ c.f.u./g

Total Yeast & Mould count (TYMC) NMT 10³ c.f.u./g

Pesticide Residue[†] (OC+OP) Complies as per API

Aflatoxins B1,B2,G1,G2[†] Complies as per API