

LAGHU SOOTASHEKHAR RASA

Monograph No. – 0500824 ver 3.0

Issue No: 03
Date of Issue: 22/03/2023
Text Reference : AFI, Part-2/16:53

Amendment No : 00
Amendment Date : --
Shelf Life: 5 years

Description

Reddish brown to brown colour, round biconvex coated tablet having SDL mark on one side.

Loss on Drying at 105°

Not more than 7 % w/w

Friability

Not more than 1 % w/w

Disintegration Time

Not more than 60 min.

Hardness

Not less than 2 kg/cm²

Thickness

4.0 ± 0.5 mm

Diameter

8.0 ± 0.5 mm

Average Weight

325 mg +/- 5%

Uniformity of weight

Not more than 2 tablets deviate by more than 5 % of the average weight and none by more than 10 % of the average weight.

Ash

Not more than 75 % w/w

Acid insoluble ash

Not more than 60 % w/w

Water soluble extractive

Not less than 2.5 % w/w

Alcohol soluble extractive

Not less than 1 % w/w

pH (1 % Aq. Solution)

6.0 - 7.5

Elemental Assay

Iron (Fe)

Not less than 10.50 mg/tab

Thin Layer Chromatography Solvent system

Hexane : Ethyl Acetate
(6.0 : 4.0)

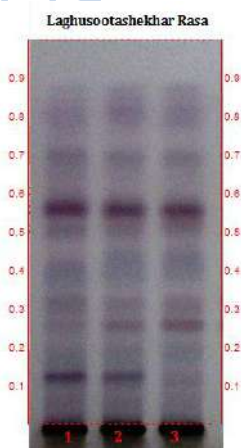
Details

Solvent of Extraction – Methanol

Solvent front – 90 mm

Total No. of Major spots – 9

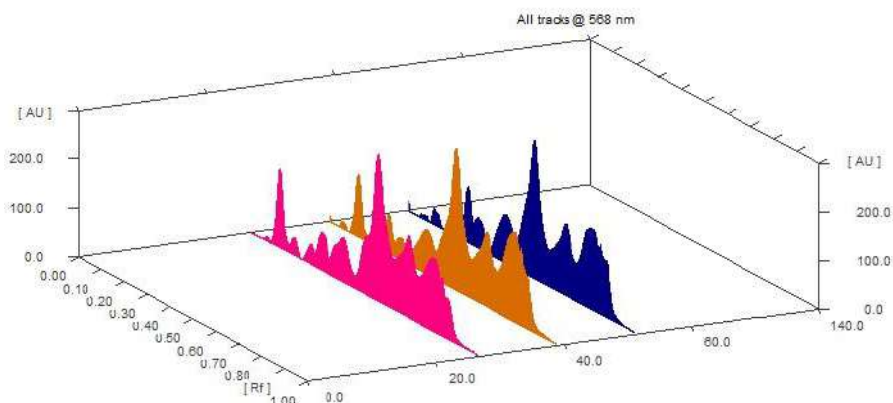
Detection – After spray with Anisaldehyde sulfuric acid reagent



Major Spots	Colour	Approx. Rf.
1	Violet	0.12
2	Purple	0.25
3	Purple	0.31
4	Light violet	0.41
5	Purple	0.50
6	Purple	0.56
7	Violet	0.69
8	Violet	0.81
9	Light Violet	0.87

Confidential - photocopy prohibited

Note : † : These extra tests can be performed on every batch at extra cost. Tests can be ascertained on request.

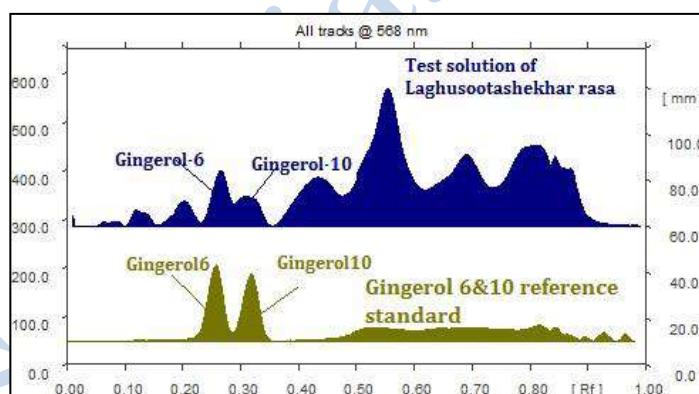
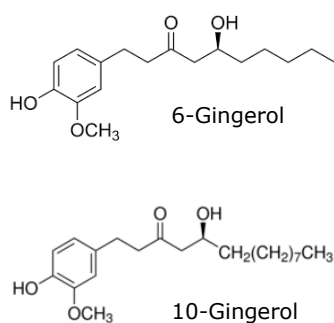


3D Peak Display of Laghu Sootashekhar Rasa at 568 nm

HPTLC Profile[†]

i) Gingerol (6 & 10)

When examined in the range of 400 nm to 700 nm, the test solution shows absorption maxima at about 568 nm corresponding with Gingerol (6 & 10) standards.



E. coli	Absent/g
P. aeruginosa	Absent/g
Salmonella sp.	Absent/g
Staphylococcus sp.	Absent/g
Total Microbial plate count (TPC)	NMT 10 ⁵ c.f.u./g
Total Yeast & Mould count (TYMC)	NMT 10 ³ c.f.u./g
Pesticide Residue[†] (OC+OP)	Complies as per API
Aflatoxins B1,B2,G1,G2[†]	Complies as per API