

SHEETASUDHA

Monograph No. – 070248 ver 3.0

Issue No: 03

Date of Issue: 28/10/2016

Text Reference : Ayurvedic Proprietary Medicine

Amendment No : 01

Amendment Date : 05/03/2025

Shelf Life: 3 years

Description

Green coloured clear syrup with characteristic odour of *Vitiveria (Ushira)* & sweet taste.

Brix

50 – 60 %

Specific gravity at 25°

1.10 – 1.30 g/ml

pH

3.5 – 4.5

Thin Layer Chromatography Solvent system

Hexane : Chloroform : Methanol
(5 : 4 : 1)

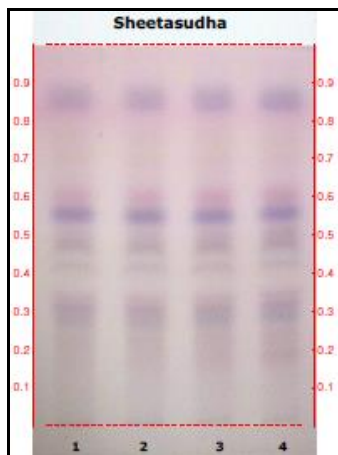
Details

Solvent of Extraction – Chloroform

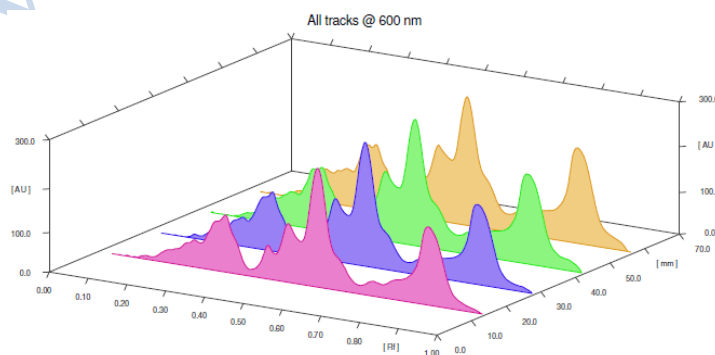
Solvent front – 90 mm

Total No. of Major spots – 7

Visualization – After spraying Anisaldehyde H_2SO_4



Major Spots	Colour	Approx. Rf.
1	Gray	0.19
2	Light Purple	0.31
3	Light Gray	0.41
4	Light Gray	0.48
5	Violet	0.55
6	Pink	0.61
7	Violet	0.85



3D Peak Display of SheetaSudha at 600 nm

Confidential - photocopy prohibited

Note : [†] : These extra tests can be performed on every batch at extra cost. Tests can be ascertained on request.

Heavy metal

Lead (Pb)	Not more than 10 ppm
Mercury (Hg)	Not more than 1 ppm
Arsenic (As)	Not more than 3 ppm
Cadmium (Cd)	Not more than 0.3 ppm
<i>E. coli</i>	Absent/ml
<i>P. aeruginosa</i>	Absent/ml
<i>Salmonella sp.</i>	Absent/ml
<i>Staphylococcus sp.</i>	Absent/ml
Total Microbial plate count (TPC)	Not more than 10^5 c.f.u./ml
Total Yeast & Mould count (TYMC)	Not more than 10^3 c.f.u./ml
Pesticide Residue [†] (OC+OP)	Complies as per API
Aflatoxins B1,B2,G1,G2 [†]	Complies as per API