

PARIPATHADI KADHA

Monograph No. – 100014 ver 3.0

Issue No: 03

Date of Issue: 24/01/2023

Text Ref : Ayurvedic Proprietary Medicine

Amendment No : 01

Amendment Date : 16/03/2024

Shelf Life: 3 years

Description

Brown coloured liquid, characteristic fermented odour, taste bitter and astringent.



pH

3.5 – 5.5

Specific Gravity at 25°

0.95 - 1.15 g/ml

Brix

20 – 35 %

Alcohol content

5 – 11 % v/v

Thin Layer Chromatography

Solvent system

Ethyl Acetate : Ethyl Methyl Ketone : Formic Acid : D/W
(5.5 : 3.5 : 0.5 : 0.5)

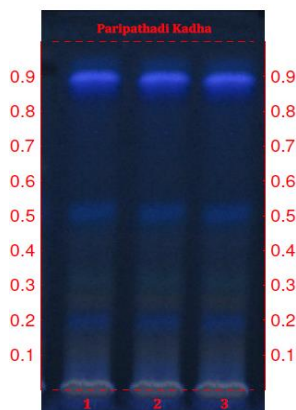
Details

Solvent of Extraction – Methanol

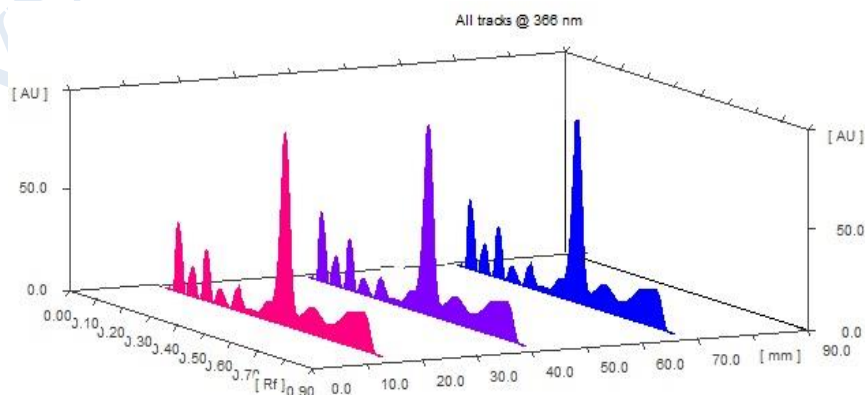
Distance travelled by solvent front – 90mm

Total No. of Major spots – 3

Detection – After spraying with NP Reagent under UV at 366 nm



Major Spots	Colour	Approx. Rf.
1	Blue	0.20
2	Blue	0.51
3	Fluorescent blue	0.90



3D Peak Display of Paripathadi Kadha at 366 nm

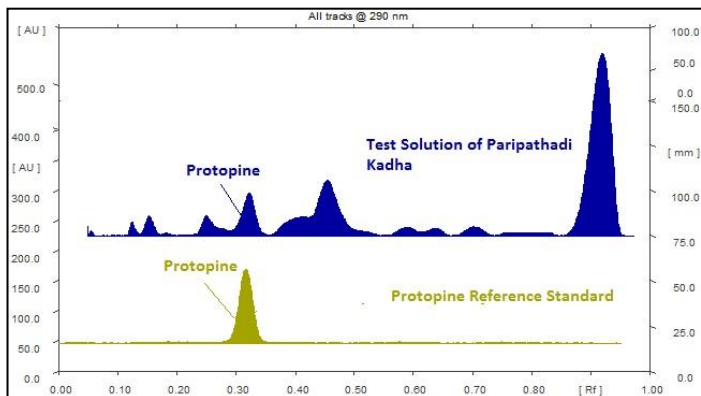
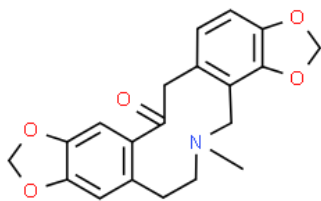
Confidential - photocopy prohibited

Note : † : These extra tests can be performed on every batch at extra cost. Tests can be ascertained on request.

HPTLC Profile[†]

i) Protopine

When examined in the range of 200 nm to 400 nm, the test solution shows absorption maxima at about 290 nm for Protopine corresponding with Protopine standard.



Heavy metal

Lead (Pb) NMT 10 ppm

Mercury (Hg) NMT 1 ppm

Arsenic (As) NMT 3 ppm

Cadmium (Cd) NMT 0.3 ppm

E. coli Absent/ml

P. aeruginosa Absent/ml

Salmonella sp. Absent/ml

Staphylococcus sp. Absent/ml

Total Microbial plate count (TPC) NMT 10⁵ c.f.u./ml

Total Yeast & Mould count (TYMC) NMT 10³ c.f.u./ml

Pesticide Residue[†] (OC+OP) Complies as per API

Aflatoxins B₁, B₂, G₁, G₂[†] Complies as per API