

## GANDHARVA HARITAKI CHOORNA VATI

Monograph No. – 0300574 ver 3.0

Issue No: 03

Amendment No : 01

Date of Issue: 23/02/2023

Amendment Date : 25/11/2023

Text Reference : Ayurvedic Proprietary Medicine

Shelf Life: 3 years

### Description

Greenish brown to brown coloured round biconvex coated tablet having SDL mark on one side.



### Loss on Drying at 105°

Not more than 8 % w/w

### Friability

Not more than 1 % w/w

### Disintegration Time

Not more than 60 min.

### Hardness

Not less than 1.5 kg/cm<sup>2</sup>

### Thickness

5.5 mm ± 0.5 mm

### Diameter

12.0 ± 0.5 mm

### Average Weight

680 mg ± 5%

### Uniformity of weight of 20 tablets

Not more than 2 tablets deviate by more than 5% of the average weight and none by more than 10% of the average weight.

### Ash

Not more than 20 % w/w

### Acid insoluble ash

Not more than 8 % w/w

### Water soluble extractive

Not less than 29 % w/w

### Alcohol soluble extractive

Not less than 27 % w/w

### pH (1% Aq. solution)

3.0 – 5.0

### Thin Layer Chromatography Mobile Phase

Chloroform : Ethyl acetate : Formic acid  
( 5 : 4 : 1.6 )

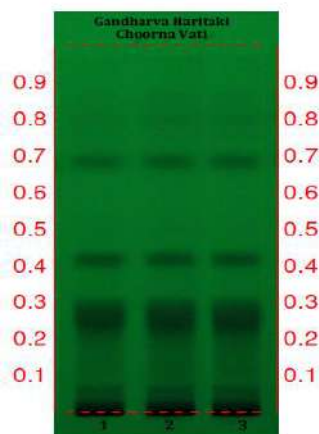
### Details

Solvent of Extraction – Methanol

Distance travelled by solvent front – 90mm

Total No. of Major spots – 4

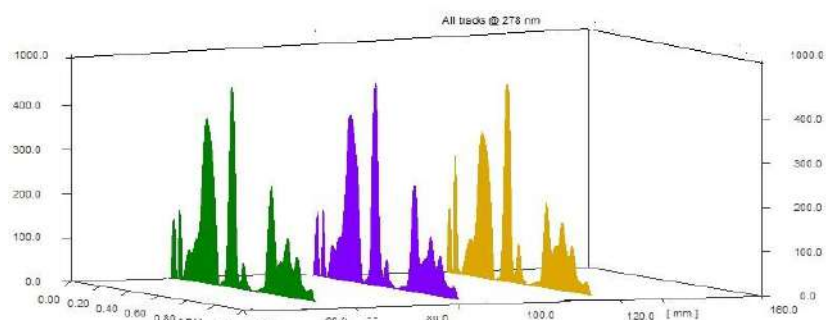
Detection – Under UV at 254 nm



Major Spots	Colour	Approx. Rf.
1	Black	0.07
2	Black	0.26
3	Black	0.42
4	Gray	0.68

### Confidential – photocopy prohibited

Note : † : These extra tests can be performed on every batch at extra cost. Tests can be ascertained on request.

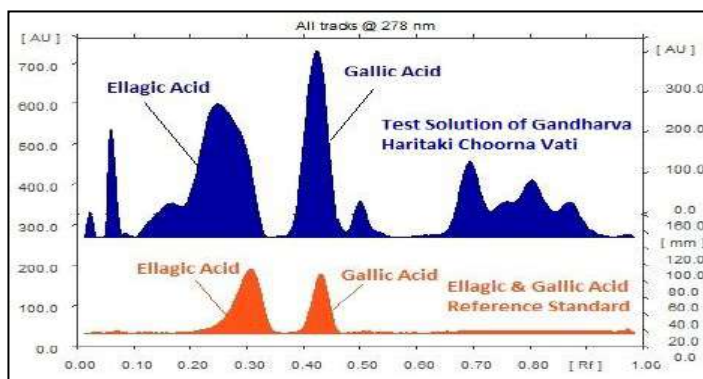
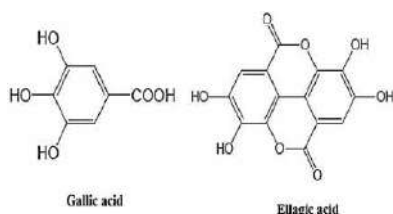


**3D Peak Display of Gandharva Haritaki Choorna Vati at 278 nm**

## HPTLC Profile

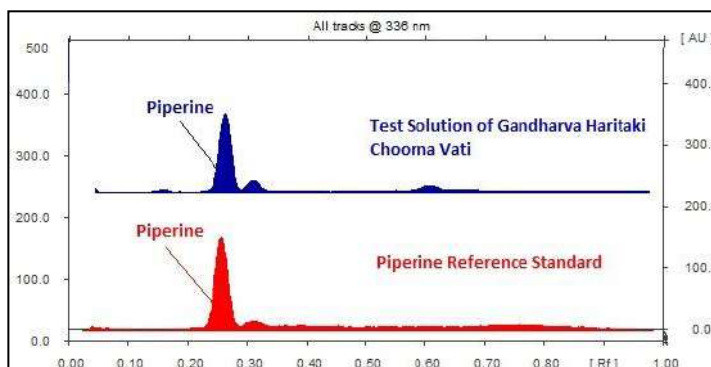
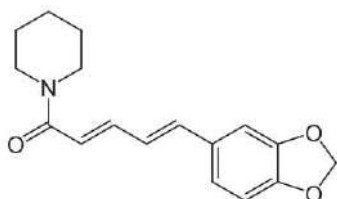
### i) Total Polyphenols (as Gallic acid & Ellagic acid)

When examined in the range of 200 nm to 400 nm, the test solution shows absorption maxima at about 290 nm for Gallic acid & 278 nm for Ellagic acid corresponding with Gallic acid & Ellagic acid standard.



### ii) Piperine

When examined in the range of 200 nm to 400 nm, the test solution shows absorption maxima at about 336 nm corresponding with Piperine standard.



## Heavy metal

<b>Lead (Pb)</b>	NMT 10 ppm
<b>Mercury (Hg)</b>	NMT 1 ppm
<b>Arsenic (As)</b>	NMT 3 ppm
<b>Cadmium (Cd)</b>	NMT 0.3 ppm

## Confidential – photocopy prohibited

Note : † : These extra tests can be performed on every batch at extra cost. Tests can be ascertained on request.



## Shree Dhootapapeshwar Standards

<b>E. coli</b>	Absent/g
<b>P. aeruginosa</b>	Absent/g
<b>Salmonella sp.</b>	Absent/g
<b>Staphylococcus sp.</b>	Absent/g
<b>Total Microbial plate count (TPC)</b>	NMT 10 <sup>5</sup> c.f.u./g
<b>Total Yeast &amp; Mould Count (TYMC)</b>	NMT 10 <sup>3</sup> c.f.u./g
<b>Pesticide Residue<sup>†</sup> (OC+OP)</b>	Complies as per API
<b>Aflatoxins B1,B2,G1,G2<sup>†</sup></b>	Complies as per API

**Confidential – photocopy prohibited**

Note : <sup>†</sup> : These extra tests can be performed on every batch at extra cost. Tests can be ascertained on request.