

GANDHARVA HARITAKI CHOORNA

Monograph No. – 030057

Issue No: 03

Date of Issue: 21/03/2023

Text Reference : Ayurvedic Proprietary Medicine

Amendment No : 01

Amendment Date : 25/11/2023

Shelf Life: 2 years

Description

Moderately fine to fine powder, Greenish brown to dark brown colour, odour characteristic and astringent taste.



Loss on Drying at 105°

Not more than 6 % w/w

Ash

Not more than 13 % w/w

Acid Insoluble Ash

Not more than 4 % w/w

Water Soluble Extractive

Not less than 34 % w/w

Alcohol Soluble Extractive

Not less than 37 % w/w

pH (10% Aq. solution)

3.0 – 4.0

Bulk Density

0.6 – 0.9 g/ml

Thin Layer Chromatography Mobile Phase

Chloroform : Ethyl acetate : Formic acid
(5 : 4 : 1.6)

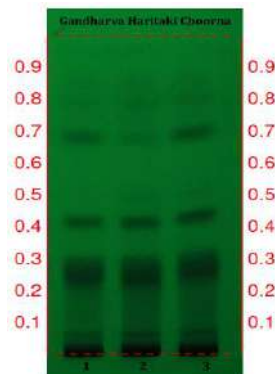
Details

Solvent of Extraction – Methanol

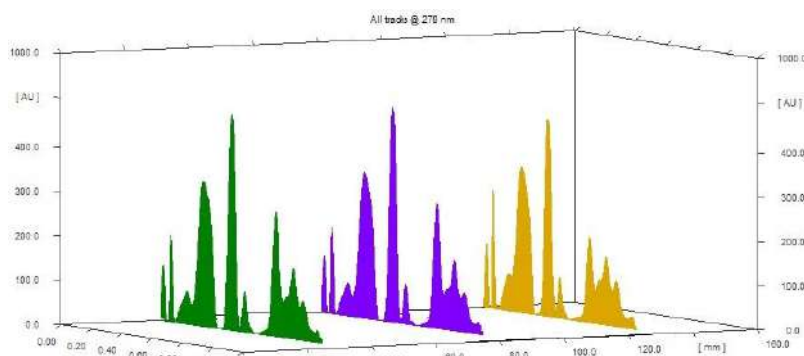
Distance travelled by solvent front – 90mm

Total No. of Major spots – 4

Detection – Under UV at 254 nm



Major Spots	Colour	Approx. Rf.
1	Black	0.07
2	Black	0.26
3	Black	0.42
4	Gray	0.68



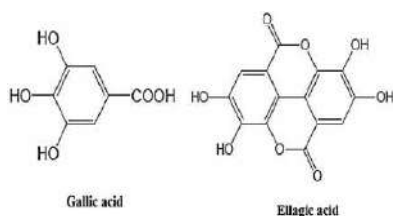
3D Peak Display of Gandharva Haritaki Choorana at 278 nm

Confidential – photocopy prohibited

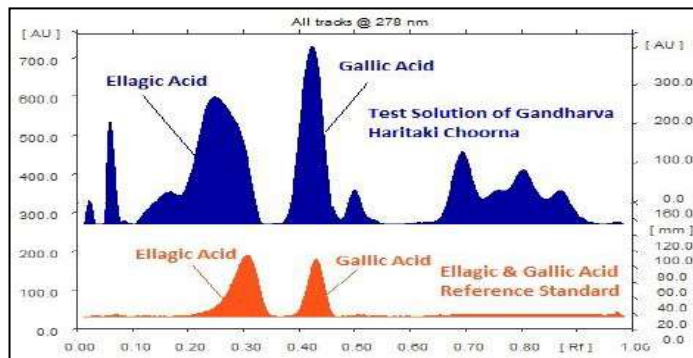
Note : † : These extra tests can be performed on every batch at extra cost. Tests can be ascertained on request.

HPTLC Profile

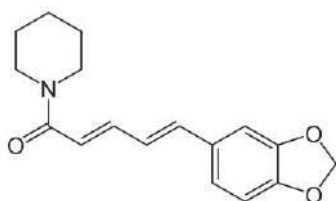
i) Total Polyphenols (as Gallic acid & Ellagic acid)



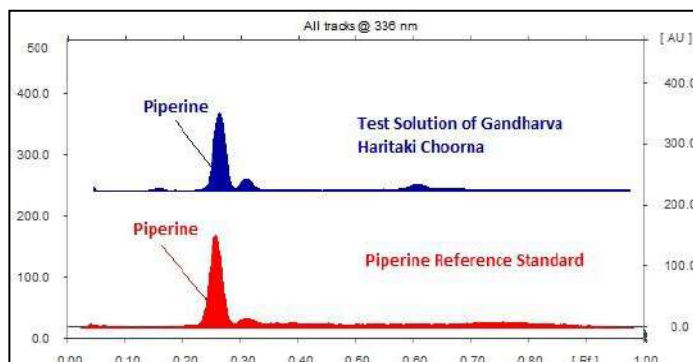
When examined in the range of 200 nm to 400 nm, the test solution shows absorption maxima at about 290 nm for Gallic acid & 278 nm for Ellagic acid corresponding with Gallic acid & Ellagic acid standard.



ii) Piperine



When examined in the range of 200 nm to 400 nm, the test solution shows absorption maxima at about 336 nm corresponding with Piperine standard.



Heavy metal

Lead (Pb)	NMT 10 ppm
Mercury (Hg)	NMT 1 ppm
Arsenic (As)	NMT 3 ppm
Cadmium (Cd)	NMT 0.3 ppm
E. coli	Absent/g
P. aeruginosa	Absent/g
Salmonella sp.	Absent/g
Staphylococcus sp.	Absent/g
Total Microbial plate count (TPC)	NMT 10 ⁵ c.f.u./g
Total Yeast & Mould count (TYMC)	NMT 10 ³ c.f.u./g
Pesticide Residue[†] (OC+OP)	Complies as per API
Aflatoxins B1,B2,G1,G2[†]	Complies as per API

Confidential – photocopy prohibited

Note : [†] : These extra tests can be performed on every batch at extra cost. Tests can be ascertained on request.