

GANDHARVA HARITAKI CHOORNA VATI

Monograph No. – 0300574 ver 3.0

Issue No: 03

Date of Issue: 23/02/2023

Text Reference : Ayurvedic Proprietary Medicine

Amendment No : 02

Amendment Date : 18/12/2024

Shelf Life: 3 years

Description

Greenish brown to brown coloured round biconvex coated tablet having SDL mark on one side.

Loss on Drying at 105°

Not more than 8 % w/w

Friability

Not more than 1 % w/w

Disintegration Time

Not more than 60 min.

Hardness

Not less than 1.5 kg/cm²

Thickness

5.5 ± 0.5 mm

Diameter

12.0 ± 0.5 mm

Average Weight

680 mg ± 5%

Uniformity of weight

Not more than 2 tablets deviate by more than 5% of the average weight and none by more than 10% of the average weight.

Ash

Not more than 20 % w/w

Acid insoluble ash

Not more than 8 % w/w

Water soluble extractive

Not less than 29 % w/w

Alcohol soluble extractive

Not less than 27 % w/w

pH (1% Aq. solution)

3.0 – 5.0

Thin Layer Chromatography Mobile Phase

Chloroform : Ethyl acetate : Formic acid
(5 : 4 : 1.6)

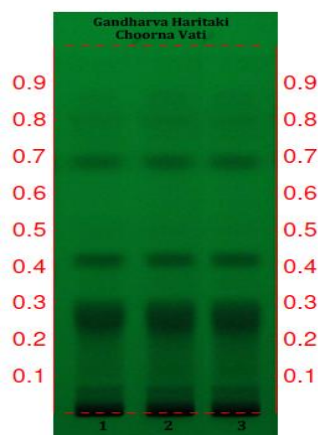
Details_

Solvent of Extraction – Methanol

Distance travelled by solvent front – 90mm

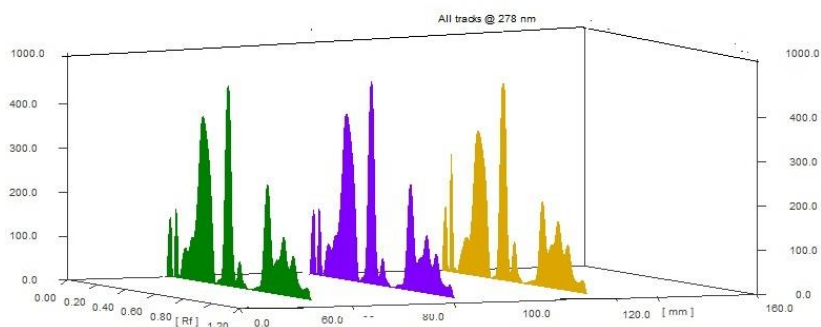
Total No. of Major spots – 4

Detection – Under UV at 254 nm



Major Spots	Colour	Approx. Rf.
1	Black	0.07
2	Black	0.26
3	Black	0.42
4	Gray	0.68



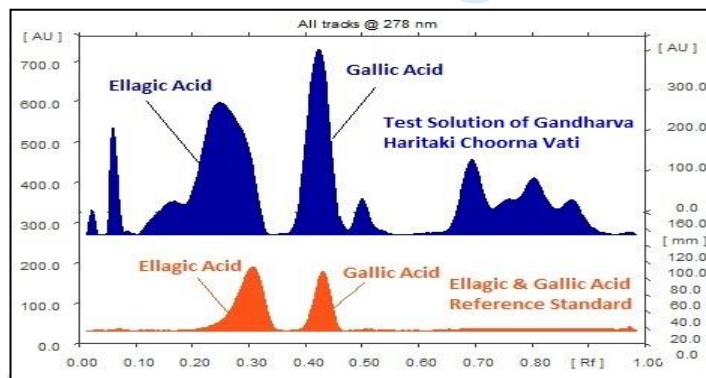
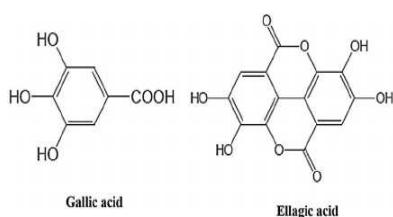


3D Peak Display of Gandharva Haritaki Choorna Vati at 278 nm

HPTLC Profile

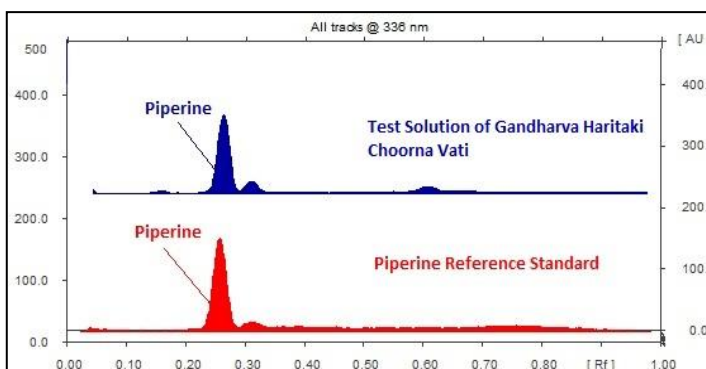
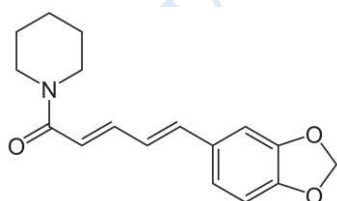
**i) Total Polyphenols
(as Gallic acid & Ellagic acid)**

When examined in the range of 200 nm to 400 nm, the test solution shows absorption maxima at about 290 nm for Gallic acid & 278 nm for Ellagic acid corresponding with Gallic acid & Ellagic acid standard.



ii) Piperine

When examined in the range of 200 nm to 400 nm, the test solution shows absorption maxima at about 336 nm corresponding with Piperine standard.



Heavy metal

Lead (Pb)	Not more than 10 ppm
Mercury (Hg)	Not more than 1 ppm
Arsenic (As)	Not more than 3 ppm
Cadmium (Cd)	Not more than 0.3 ppm

<i>E. coli</i>	Absent/g
<i>P. aeruginosa</i>	Absent/g
<i>Salmonella sp.</i>	Absent/g
<i>Staphylococcus sp.</i>	Absent/g
Total Microbial plate count (TPC)	Not more than 10 ⁵ c.f.u./g
Total Yeast & Mould Count (TYMC)	Not more than 10 ³ c.f.u./g
Pesticide Residue [†] (OC+OP)	Complies as per API
Aflatoxins B1,B2,G1,G2 [†]	Complies as per API