

ASHVAGANDHA PAK

Monograph No. – 010064 ver 3.0

Issue No: 03

Date of Issue: 09/01/2023

Text Reference : Bharat Bhaishajya Ratnakar 1/153

Amendment No : 00

Amendment Date : --

Shelf Life: 3 years

Description

Brown to Blackish brown, semi solid mass having camphor like odour & flavour with pungent taste.

Loss on Drying at 105°

Not more than 28 % w/w

Ash

Not more than 2 % w/w

Acid Insoluble Ash

Not more than 1 % w/w

Alcohol Soluble Extractive

Not less than 40.0 % w/w

Water Soluble Extractive

Not less than 40.0 % w/w

pH (1% aqueous solution)

4.0 – 6.0

Thin Layer Chromatography Solvent system

Toluene : Ethyl Acetate
(9.3 : 0.7)

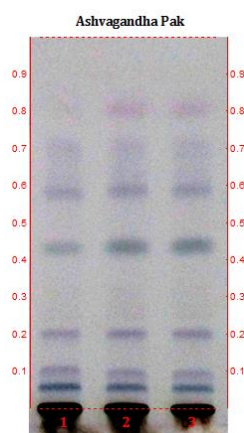
Details

Solvent of Extraction – Methanol

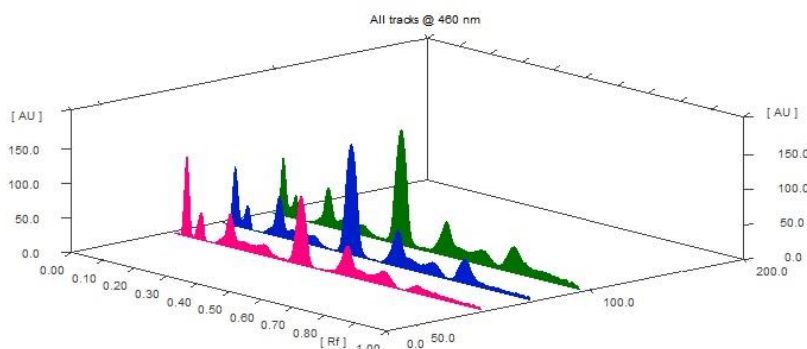
Solvent front – 90 mm

Total No. of Major spots – 7

Detection – After spray with Anisaldehyde sulfuric acid reagent



Major Spots	Colour	Approx. Rf.
1	Blue	0.06
2	Violet	0.11
3	Violet	0.20
4	Greenish Grey	0.43
5	Violet	0.58
6	Light Violet	0.70
7	Light Pink	0.81



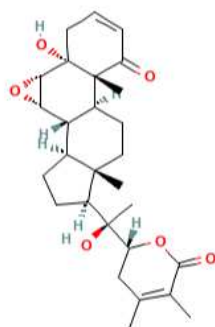
3D Peak Display of Ashvagandha Pak at 460 nm

Confidential - photocopy prohibited

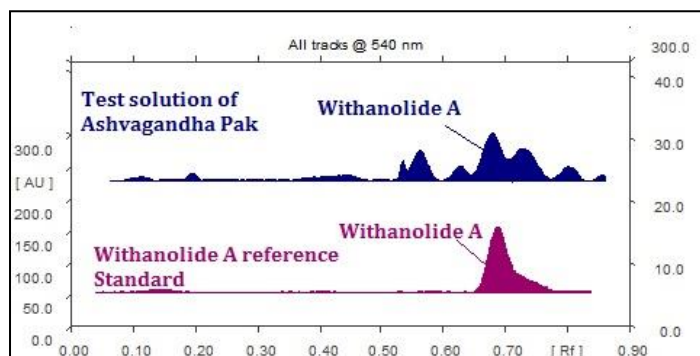
Note : [†] : These extra tests can be performed on every batch at extra cost. Tests can be ascertained on request.

HPTLC Profile +

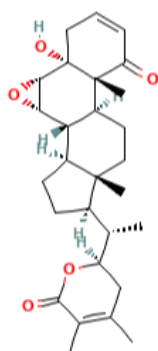
i) Withanolide A



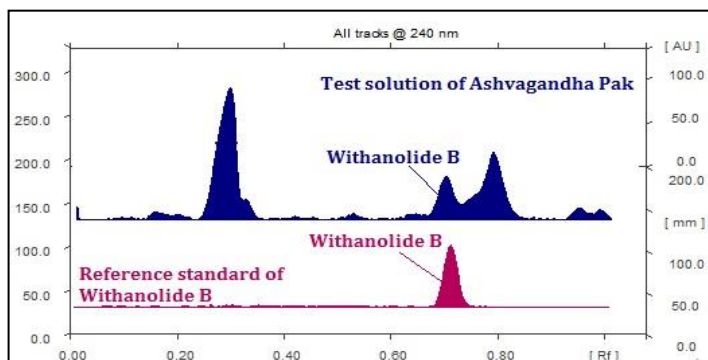
When examined in the range of 400 nm to 700 nm, the test solution shows absorption maxima at about 540 nm corresponding with Withanolide A standard.



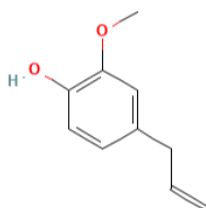
ii) Withanolide B



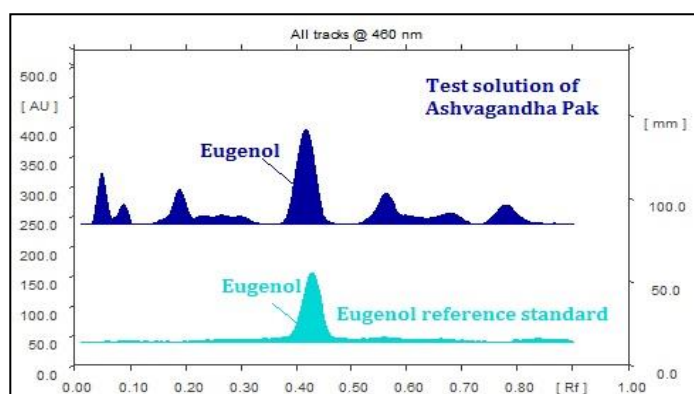
When examined in the range of 200 nm to 400 nm, the test solution shows absorption maxima at about 240 nm corresponding with Withanolide B standard.



iii) Eugenol



When examined in the range of 400 nm to 700 nm, the test solution shows absorption maxima at about 460 nm corresponding with Eugenol standard.



Heavy metal

Lead (Pb)

NMT 10 ppm

Mercury (Hg)

NMT 1 ppm

Arsenic (As)

NMT 3 ppm

Cadmium (Cd)

NMT 0.3 ppm

Confidential - photocopy prohibited

Note : [†] : These extra tests can be performed on every batch at extra cost. Tests can be ascertained on request.

E. coli	Absent/g
P. aeruginosa	Absent/g
Salmonella sp.	Absent/g
Staphylococcus sp.	Absent/g
Total Microbial plate count (TPC)	NMT 10 ⁵ c.f.u./g
Total Yeast & Mould Count (TYMC)	NMT 10 ³ c.f.u./g
Pesticide Residue [†] (OC+OP)	Complies as per API
Aflatoxins B1,B2,G1,G2 [†]	Complies as per API