

## MAHA SWARNA BRAHMA YOG

**Monograph No. – 0703614 ver 3.0**

Issue No: 03

Date of Issue: 11/01/2022

Text Reference : Ayurvedic Proprietary Medicine

Amendment No : 00

Amendment Date : --

Shelf Life: 5 years

### Description

Light gray to gray colour round flat dispersible tablet having SDL mark on one side

### Loss on Drying at 105°

Not more than 7 % w/w

### Friability

Not more than 1 % w/w

### Disintegration Time

Not more than 3 min.

### Hardness

Not less than 2 kg/cm<sup>2</sup>

### Thickness

4.7 ± 0.5 mm

### Diameter

10.0 ± 0.5 mm

### Average Weight

455 mg ± 5 %

### Uniformity of weight

Not more than 2 tablets deviate by more than 5 % of the average weight and none by more than 10 % of the average weight.

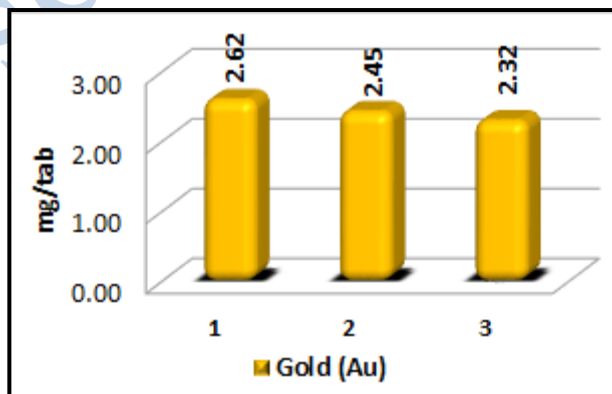
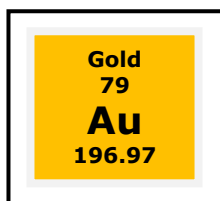
### pH (1 % Aq. Solution)

5.0 – 7.0

### Elemental Assay

#### Gold (Au)

**Not less than 2.0 mg/tab**



**Graphical Representation of Gold Content in Maha Swarna Brahma Yog (Batch to Batch Consistency) by ICPOES**

## Thin Layer Chromatography Solvent system

Ethyl acetate : Methanol : Toluene : Water  
( 4 : 1 : 1 : 0.5 )

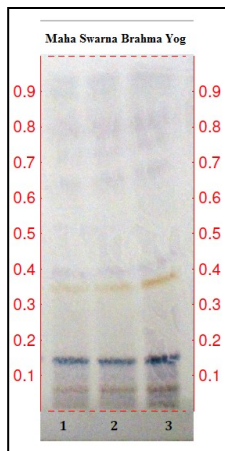
## Details

Solvent of Extraction – Methanol

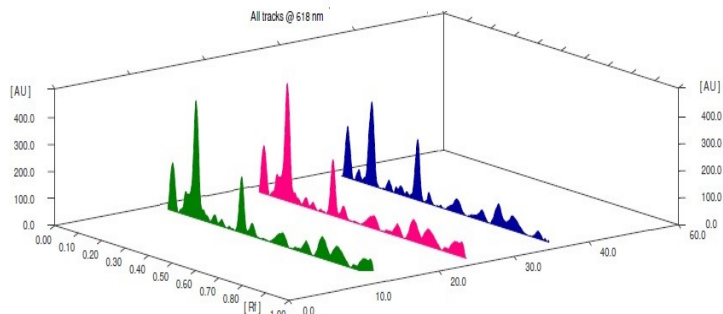
Solvent front – 90 mm

Total No. of Major spots – 8

Detection – After spray with after vanillin sulfuric acid reagent.



Major Spots	Colour	Approx. Rf.
1	Brown	0.06
2	Blue	0.14
3	Yellowish brown	0.34
4	Gray	0.39
5	Light purple	0.64
6	Light purple	0.71
7	Light purple	0.80
8	Light purple	0.89

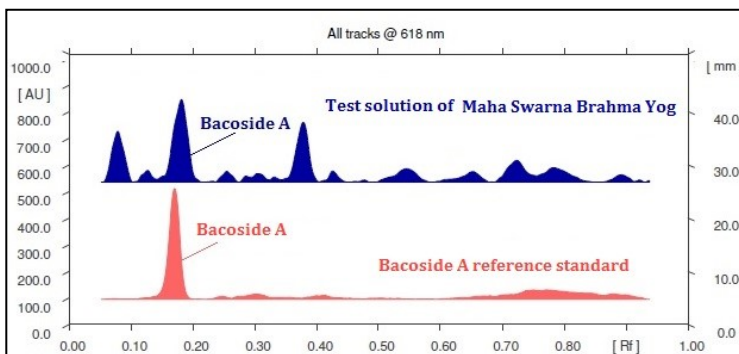
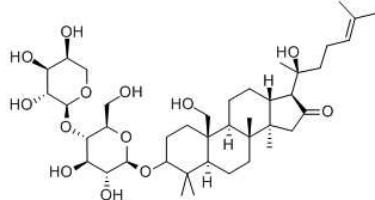


**3D Peak Display of Maha Swarna Brahma Yog at 618 nm**

## HPTLC Profile<sup>†</sup>

### i) Bacoside

When examined in the range of 400 nm to 700 nm, the test solution shows absorption maxima at about 618 nm corresponding with Bacoside standard.



### Heavy metal

<b>Lead (Pb)</b>	NMT 10 ppm
<b>Mercury (Hg)</b>	NMT 1 ppm
<b>Arsenic (As)</b>	NMT 3 ppm
<b>Cadmium (Cd)</b>	NMT 0.3 ppm
<b>E. coli</b>	Absent/g
<b>P. aeruginosa</b>	Absent/g
<b>Salmonella sp.</b>	Absent/g
<b>Staphylococcus sp.</b>	Absent/g
<b>Total Microbial plate count (TPC)</b>	NMT 10 <sup>5</sup> c.f.u./g
<b>Total Yeast &amp; Mould count (TYMC)</b>	NMT 10 <sup>3</sup> c.f.u./g
<b>Pesticide Residue <sup>†</sup> (OC+OP)</b>	Complies as per API
<b>Aflatoxins B1,B2,G1,G2 <sup>†</sup></b>	Complies as per API

www.sdlindia.com