

## VATAVIDHWANSA RASA

Monograph No. – 0800254 ver 3.0

Issue No: 03

Amendment No : 03

Date of Issue: 28/10/2016

Amendment Date : 16/07/2024

Text Reference : Bharat Bhaishajya Ratnakar 4/6999

Shelf Life: 5 years

### Description

Greenish Gray colour, round biconvex tablet having SDL mark on one side.

### Loss on Drying at 105°

Not more than 15 % w/w

### Friability

Not more than 1 % w/w

### Disintegration Time

Not more than 30 min.

### Thickness

4.5 ± 0.5 mm

### Diameter

8.0 ± 0.5 mm

### Hardness

Not less than 2 kg/cm<sup>2</sup>

### Average Weight

290 mg ± 5 %

### Uniformity of weight

Not more than 2 tablets deviate by more than 5% of the Average Weight and none by more than 10% of the Average Weight.

### Ash

Not more than 30 % w/w

### Acid insoluble ash

Not more than 3 % w/w

### Water soluble extractive

Not less than 25 % w/w

### Alcohol soluble extractive

Not less than 7 % w/w

### pH (1% Aq. Solution)

8.5 – 10.0

### Elemental Assay

#### Mercury (Hg)

20 – 27 mg/tablet

#### Sulphur (S)

25 - 40 mg/tablet

#### Calcium (Ca)

Not less than 13 mg/tablet

### Thin Layer Chromatography Solvent system

Toluene : Acetone : Chloroform  
( 3.2 : 0.4 : 6.4 )

### Details

Solvent of Extraction – Chloroform

Solvent front – 90 mm

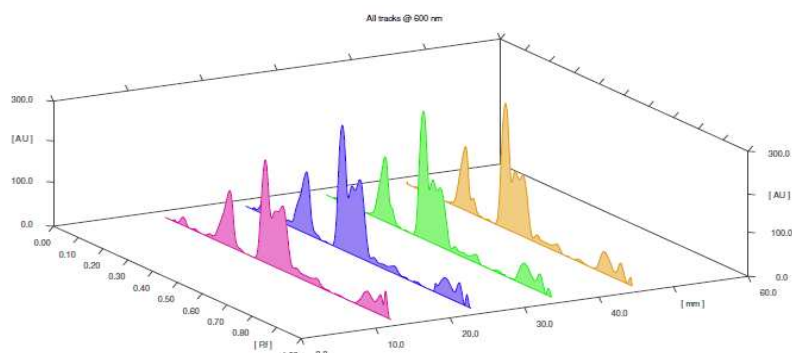
Total No. of Major spots – 4

Visualization – After spraying Anisaldehyde H<sub>2</sub>SO<sub>4</sub>



Major Spots	Colour	Approx. Rf.
1	Violet	0.26
2	Sky Blue	0.41
3	Light Blue	0.46
4	Light Blue	0.51



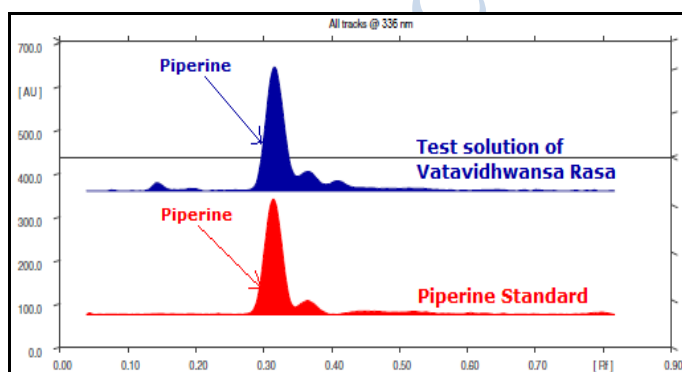
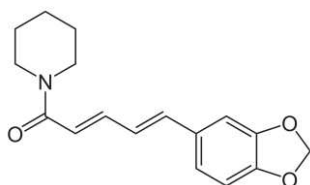


**3D Peak Display of Vatavidhwansa Rasa at 600 nm**

**HPTLC Profile<sup>†</sup>**

**i) Piperine**

When examined in the range of 200 nm to 400 nm, the test solution shows absorption maxima at about 336 nm corresponding with Piperine standard.



<b><i>E. coli</i></b>	Absent/g
<b><i>P. aeruginosa</i></b>	Absent/g
<b><i>Salmonella sp.</i></b>	Absent/g
<b><i>Staphylococcus sp.</i></b>	Absent/g
<b>Total Microbial plate count (TPC)</b>	Not more than 10 <sup>5</sup> c.f.u./g
<b>Total Yeast &amp; Mould count (TYMC)</b>	Not more than 10 <sup>3</sup> c.f.u./g
<b>Pesticide Residue<sup>†</sup> (OC+OP)</b>	Complies as per API
<b>Aflatoxins B1,B2,G1,G2<sup>†</sup></b>	Complies as per API