

## VATAVIDHWANSA (MAHA) RASA (WITH JAYAPALA)

Monograph No. – 0800114 ver 3.0

Issue No: 03

Amendment No : 04

Date of Issue: 28/10/2016

Amendment Date : 25/01/2025

Text Reference : Bharat Bhaishajya Ratnakar 4/6996

Shelf Life: 5 years

### Description

Gray to Dark gray colour, round convex coated tablet having SDL mark on one side.



### Loss on Drying at 105°

Not more than 6 % w/w

### Friability

Not more than 1 % w/w

### Disintegration Time

Not more than 60 min.

### Hardness

Not less than 2 kg/cm<sup>2</sup>

### Thickness

4.5 ± 0.5 mm

### Diameter

8.0 ± 0.5 mm

### Average Weight

324 mg ± 5 %

### Uniformity of weight

Not more than 2 tablets deviate by more than 5% of the Average Weight and none by more than 10% of the Average Weight.

### Ash

Not more than 30 % w/w

### Acid insoluble ash

Not more than 12 % w/w

### Water soluble extractive

Not less than 20 % w/w

### Alcohol soluble extractive

Not less than 15 % w/w

### pH (1 % Aq. Solution)

4.0 - 5.5

### Elemental Assay

#### Mercury (Hg)

10.0 – 15 mg/tablet

#### Copper (Cu)

8.0 – 12.5 mg/tablet

#### Sulphur (S)

18.0 – 27.50 mg/tablet

#### Iron (Fe)

12.0 – 18.0 mg/tablet

### Thin Layer Chromatography Solvent system

Toluene : Acetone : Chloroform  
( 3.2 : 0.4 : 6.4 )

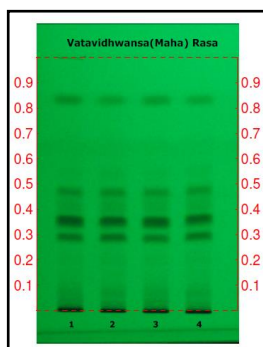
### Details

Solvent of Extraction – Methanol

Solvent front – 90 mm

Total No. of Major spots – 4

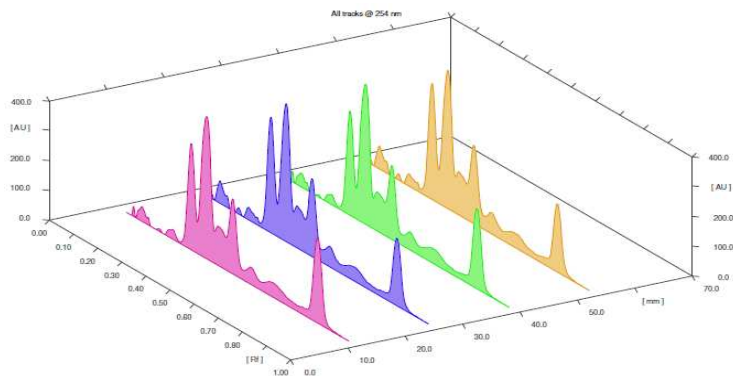
Visualization – Under UV at 254 nm



Major Spots	Colour	Approx. Rf.
1	Gray	0.29
2	Black	0.35
3	Gray	0.47
4	Gray	0.83

**Confidential – photocopy prohibited**

Note : † : These extra tests can be performed on every batch at extra cost. Tests can be ascertained on request.

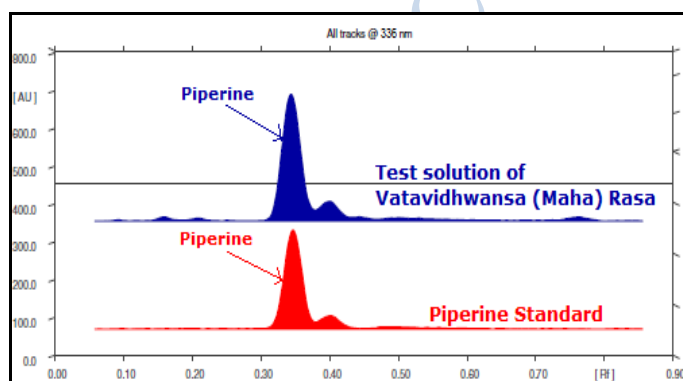
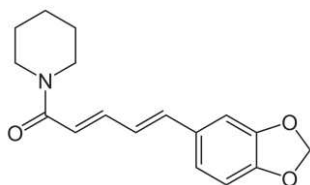


**3D Peak Display of Vatavidhwansa (Maha) Rasa at 254 nm**

### HPTLC Profile<sup>†</sup>

#### i) Piperine

When examined in the range of 200 nm to 400 nm, the test solution shows absorption maxima at about 336 nm corresponding with Piperine standard.



***E. coli***

Absent/g

***P. aeruginosa***

Absent/g

***Salmonella sp.***

Absent/g

***Staphylococcus sp.***

Absent/g

**Total Microbial plate count (TPC)**

Not more than 10<sup>5</sup> c.f.u./g

**Total Yeast & Mould count (TYMC)**

Not more than 10<sup>3</sup> c.f.u./g

**Pesticide Residue<sup>†</sup> (OC+OP)**

Complies as per API

**Aflatoxins B1,B2,G1,G2<sup>†</sup>**

Complies as per API

**Confidential – photocopy prohibited**

Note : <sup>†</sup> : These extra tests can be performed on every batch at extra cost. Tests can be ascertained on request.