

VATARI GUGGUL

Monograph No. – 0400264 ver 3.0

Issue No: 03

Date of Issue: 01/03/2020

Text Reference : Ayurvedic Formulary of India 1-5:10

Amendment No : 03

Amendment Date : 02/05/2022

Shelf Life: 5 years

Description

Grayish brown to brown coloured round biconvex coated tablet having SDL mark on one side.



Loss on Drying at 105°

Not more than 6% w/w

Friability

Not more than 1 % w/w

Disintegration Time

Not more than 60 min.

Hardness

Not less than 1.5 kg/cm²

Thickness

6.0 ± 0.5 mm

Diameter

8.0 ± 0.5 mm

Average Weight

365 mg ± 5 %

Uniformity of weight of 20 tablets

Not more than 2 tablets deviate by more than 5% of the average weight and none by more than 10% of the average weight.

Ash

Not more than 35 % w/w

Acid insoluble ash

Not more than 10 % w/w

Water soluble extractive

Not less than 25 % w/w

Alcohol soluble extractive

Not less than 13 % w/w

pH (1% Aq. Solution)

5.0 – 6.5

Elemental Assay

Sulphur (S)

Not less than 35.40 mg/tab

Thin Layer Chromatography Solvent system

Toluene : Ethyl acetate
(8.0 : 2.0)

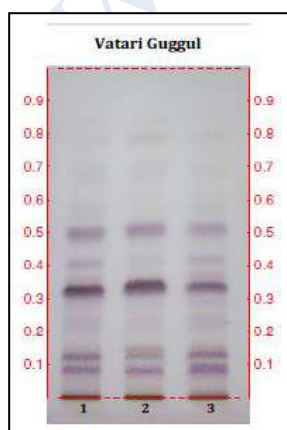
Details

Solvent of Extraction – Methanol

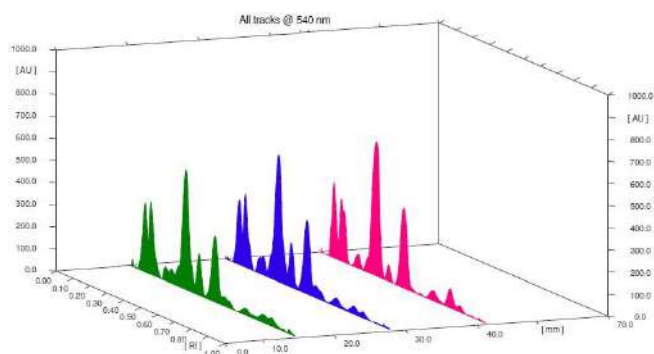
Solvent front – 90 mm

Total No. of Major spots – 6

Detection – After derivatization with Anisaldehyde H₂SO₄



Major Spots	Colour	Approx. Rf.
1	Violet	0.09
2	Violet	0.13
3	Light Violet	0.23
4	Violet	0.33
5	Light Violet	0.42
6	Violet	0.51

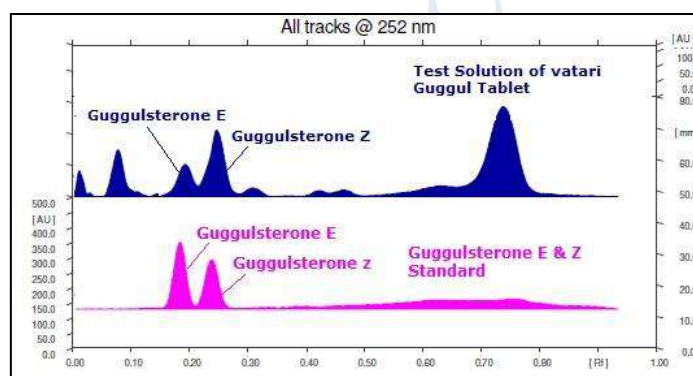
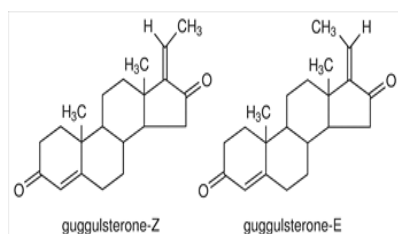


3D Peak Display of Vatari Guggul at 540 nm

HPTLC Profile[†]

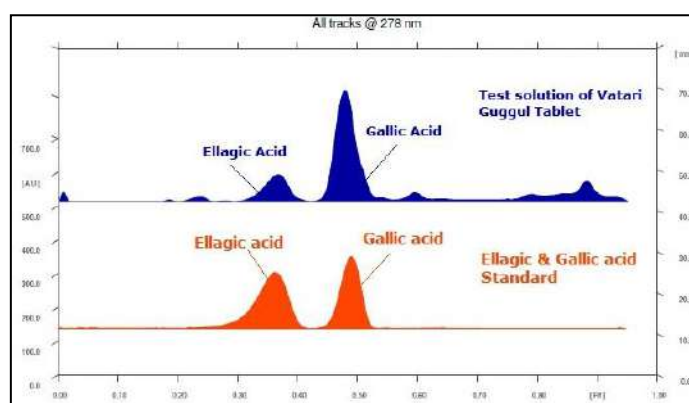
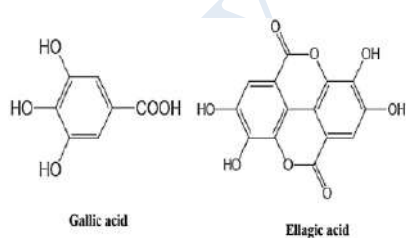
i) Guggulsterone (E & Z)

When examined in the range of 200 nm to 400 nm, the test solution shows absorption maxima at about 252 nm corresponding with Guggulsterone (E & Z) standard.



ii) Total Polyphenols (as Gallic acid & Ellagic acid)

When examined in the range of 200 nm to 400 nm, the test solution shows absorption maxima at about 290 nm for Gallic acid & 278 nm for Ellagic acid corresponding with Gallic acid & Ellagic acid standard.



E. coli	Absent/g
P. aeruginosa	Absent/g
Salmonella sp.	Absent/g
Staphylococcus sp.	Absent/g

Total Microbial plate count (TPC)	NMT 10 ⁵ c.f.u./g
Total Yeast & Mould count (TYMC)	NMT 10 ³ c.f.u./g
Pesticide Residue [†] (OC+OP)	Complies as per API
Aflatoxins B1,B2,G1,G2 [†]	Complies as per API