

## TRIPHALA CHOORNA VATI

**Monograph No. – 0300154 ver 3.0**

Issue No: 03

Amendment No : 01

Date of Issue: 28/03/2017

Amendment Date : 18/12/2024

Text Reference : Bhavaprakash Nighantu (Haritakyadi Varga)

Shelf Life: 3 years

### Description

Greenish brown coloured round biconvex coated tablets.

### Loss on Drying at 105°

Not more than 7 % w/w

### Friability

Not more than 1 % w/w

### Disintegration Time

Not more than 60 min.

### Hardness

Not less than 2.0 kg/cm<sup>2</sup>

### Thickness

5.5 ± 0.5 mm

### Diameter

12.0 - 12.5 mm

### Average Weight

660 mg ± 5%

### Uniformity of weight

Not more than 2 tablets deviate by more than 5% of the average weight and none by more than 10% of the average weight.

### Ash

Not more than 15 % w/w

### Acid insoluble ash

Not more than 5 % w/w

### Water soluble extractive

Not less than 20 % w/w

### Alcohol soluble extractive

Not less than 15 % w/w

### Thin Layer Chromatography

#### Solvent system

Chloroform : Ethyl acetate : Formic acid  
( 5 : 4 : 1.6 )

#### Details

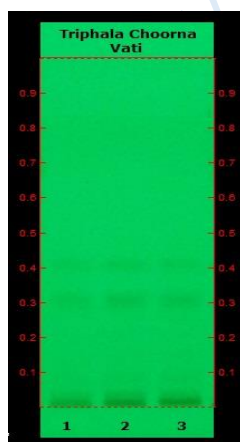
Solvent of Extraction – Methanol

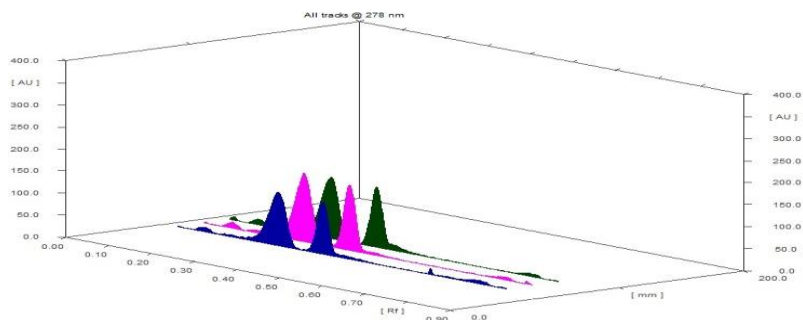
Solvent front – 90 mm

Total No. of Major spots – 2

Detection – Under UV at 254 nm

Major Spots	Colour	Approx. Rf.
1	Light Gray	0.31
2	Light Gray	0.40



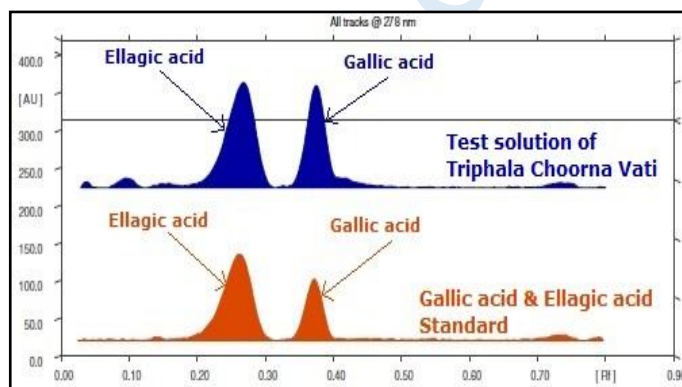
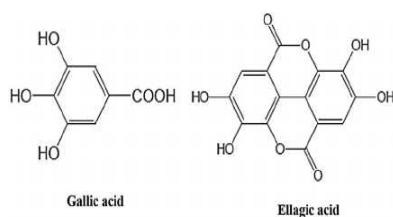


**3D Peak Display of Triphala Choorna vati at 278 nm**

## HPTLC Profile<sup>†</sup>

### i) Total Polyphenols (as Gallic acid & Ellagic acid)

When examined in the range of 200 nm to 400 nm, the test solution shows absorption maxima at about 290 nm for Gallic acid & 278 nm for Ellagic acid corresponding with Gallic acid & Ellagic acid standard.



## Heavy metal

<b>Lead (Pb)</b>	Not more than 10 ppm
<b>Mercury (Hg)</b>	Not more than 1 ppm
<b>Arsenic (As)</b>	Not more than 3 ppm
<b>Cadmium (Cd)</b>	Not more than 0.3 ppm

***E. coli*** Absent/g

***P. aeruginosa*** Absent/g

***Salmonella sp.*** Absent/g

***Staphylococcus sp.*** Absent/g

**Total Microbial plate count (TPC)** Not more than 10<sup>5</sup> c.f.u./g

**Total Yeast & Mould Count (TYMC)** Not more than 10<sup>3</sup> c.f.u./g

**Pesticide Residue<sup>†</sup> (OC+OP)** Complies as per API

**Aflatoxins B1,B2,G1,G2<sup>†</sup>** Complies as per API