

TAMRA BHASMA

Monograph No. – 020019 ver 3.0

Issue No: 03

Date of Issue: 22/03/2018

Text Reference : Rasaratnasamuchchaya 5/53

Amendment No : 03

Amendment Date : 08/06/2024

Shelf Life: 5 years

Description

A fine powder, Black colour, odourless, tasteless.

Sieve Test

Passes 200 mesh

Loss on Drying at 105°

Not more than 2 % w/w

Loss on Ignition at 800°

Not more than 25 % w/w

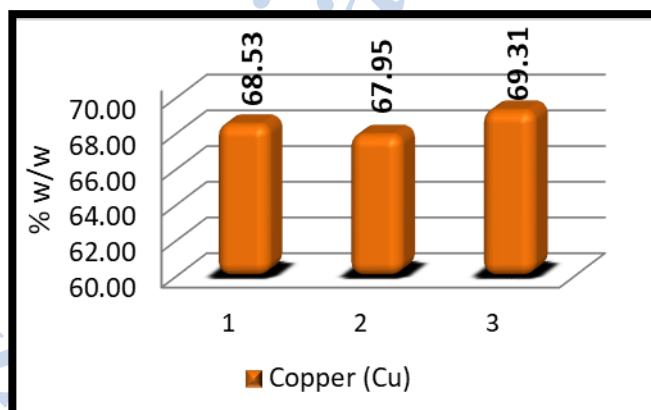
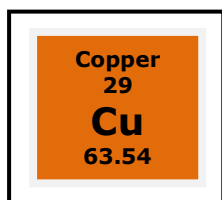
Acid Insoluble Ash

Not more than 10 % w/w

Elemental assay

Copper (Cu)

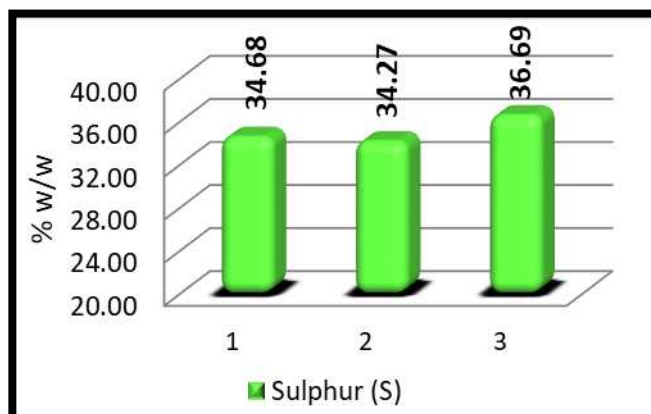
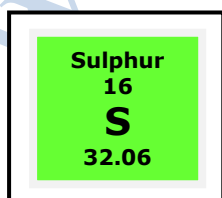
58 - 71 % w/w



Graphical Representation of Copper Content in Tamra Bhasma (Batch to Batch Consistency) by ICP-OES

Sulphur (S)

31 - 39 % w/w



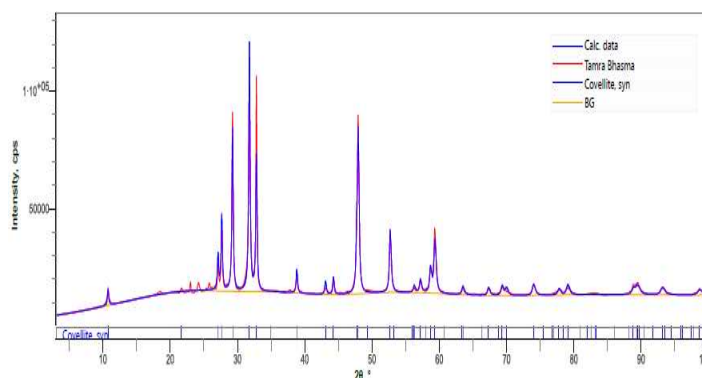
Graphical Representation of Sulphur Content in Tamra Bhasma (Batch to Batch Consistency) by ICP-OES

Confidential – photocopy prohibited

Note : † : These extra tests can be performed on every batch at extra cost. Tests can be ascertained on request.

XRD Profile [†]

Confirms the presence of major phase with characteristic peaks of CuS.



Acute Toxicity

Non-toxic when single dose (10 x therapeutic dose) administered orally

E. coli

Absent/g

P. aeruginosa

Absent/g

Salmonella sp.

Absent/g

Staphylococcus sp.

Absent/g

Total Microbial plate count (TPC)

NMT 10⁵ c.f.u./g

Total Yeast & Mold count (TYMC)

NMT 10³ c.f.u./g

Ayurvedic Parameter

Rekhapurnatwa

Rekhapurna

Varitaratwa

Varitar

Unmanatwa

Unmana

Apunarbhavatwa

Apunarbhav

Dadhi Pariksha

No green colour should be produced

Confidential – photocopy prohibited

Note : [†] : These extra tests can be performed on every batch at extra cost. Tests can be ascertained on request.