

STREE VYADHIHARI RASA

Monograph No. – 1902644 ver 3.0

Issue No: 03

Date of Issue: 16/11/2016

Text Reference : Ayurvedic Proprietary Medicine

Amendment No : 00

Amendment Date : --

Shelf Life: 5 years

Description

Pink colour, round biconvex film coated tablet having SDL mark on one side.

Loss on Drying at 105°

Not more than 8 % w/w

Hardness

Not less than 2.5 kg/cm²

Thickness

5.5 ± 0.5 mm

Diameter

12.5 ± 0.5 mm

Friability

Not more than 1 % w/w

Disintegration Time

Not more than 60 min.

Average Weight

660 mg ± 5 %

Elemental Assay

Gold (Au)

0.55 – 0.8 mg/tab

Silver (Ag)

0.4 – 0.7 mg/tab

Mercury (Hg)

0.55 – 0.85 mg/tab

Copper (Cu)

Not less than 0.3 mg/tab

Iron (Fe)

Not less than 0.1 mg/tab

Thin Layer Chromatography Solvent system

Toluene : Ethyl acetate
(7 : 3)

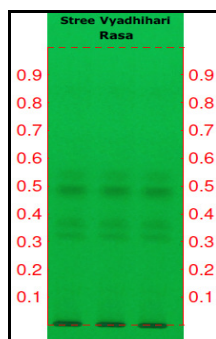
Details

Solvent of Extraction – Methanol

Solvent front – 90 mm

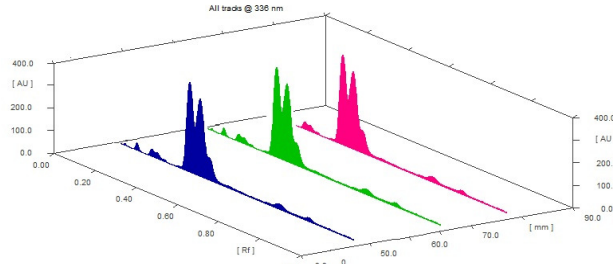
Total No. of Major spots – 4

Detection – Under UV at 254 nm



Major Spots	Colour	Approx. Rf.
1	Light Gray	0.32
2	Light Gray	0.37
3	Gray	0.48
4	Light Gray	0.52



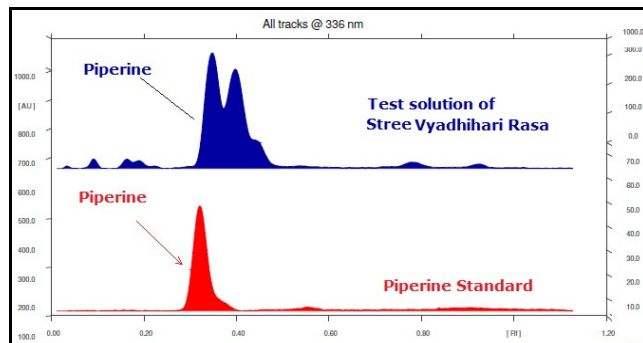
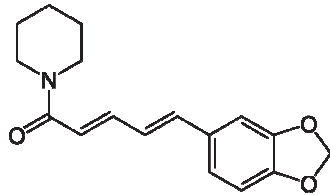


3D Peak Display of Stree vyadhihari Rasa at 336nm

HPTLC Profile

i) Piperine

When examined in the range of 200 nm to 400 nm, the test solution shows absorption maxima at about 336 nm corresponding with Piperine standard.



E. coli [†]	Absent/g
P. aeruginosa [†]	Absent/g
Salmonella sp. [†]	Absent/g
Staphylococcus sp. [†]	Absent/g
Total Microbial plate count (TPC) [†]	NMT 10 ⁵ c.f.u./g
Total Yeast & Mould count [†]	NMT 10 ³ c.f.u./g
Pesticide Residue [†] (OC+OP)	Complies as per API
Aflatoxins B1,B2,G1,G2 [†]	Complies as per API