

SINHANAD GUGGUL

Monograph No. – 0400064 ver 3.0

Issue No: 03

Date of Issue: 28/10/2016

Text Reference : Ayurved Sara Sangraha

Amendment No : 03

Amendment Date : 02/05/2022

Shelf Life: 5 years

Description

Greenish gray to Blackish brown colour, round biconvex coated tablet having SDL mark on one side.

Loss on Drying at 105°

Not more than 8 % w/w

Friability

Not more than 1 % w/w

Disintegration Time

Not more than 60 min.

Hardness

Not less than 1.5 kg/cm²

Thickness

5.5 ± 0.5 mm

Diameter

8.0 ± 0.5 mm

Average Weight

345 mg ± 5%

Uniformity of weight

Not more than 2 tablets deviate by more than 5% of the average weight and none by more than 10% of the average weight.

Ash

Not more than 25 % w/w

Acid insoluble ash

Not more than 4 % w/w

Water soluble extractive

Not less than 25 % w/w

Alcohol soluble extractive

Not less than 25 % w/w

pH (1% Aq. Solution)

5.0 - 6.5

Elemental Assay

Sulphur (S)

12 – 17 mg/tab

Thin Layer Chromatography Solvent system

Toluene : Acetone
(9.0 : 1.0)

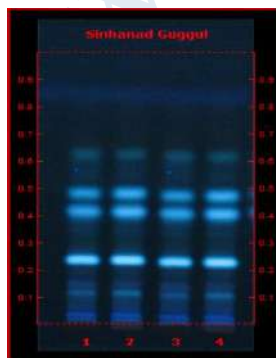
Details

Solvent of Extraction – Methanol

Solvent front – 90 mm

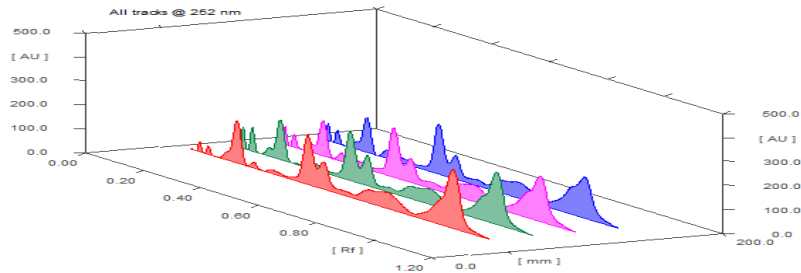
Total No. of Major spots – 7

Detection – Under UV at 366 nm



Major Spots	Colour	Approx. Rf.
1	Blue	0.04
2	Light Blue	0.12
3	Light Blue	0.16
4	Fluorescent Blue	0.25
5	Fluorescent Blue	0.42
6	Fluorescent Blue	0.49
7	Light Blue	0.63



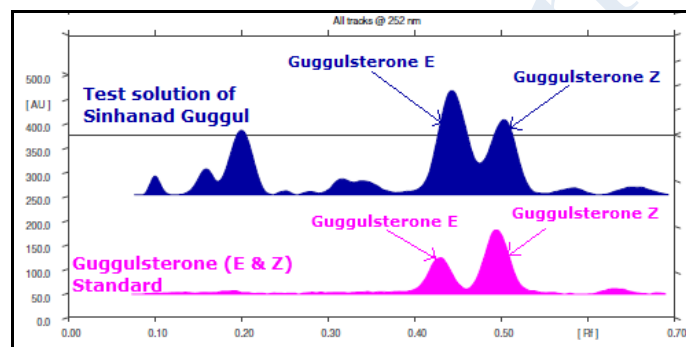
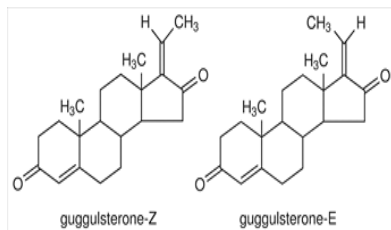


3D Peak Display of Sinhanad Guggul at 251 nm

HPTLC Profile[†]

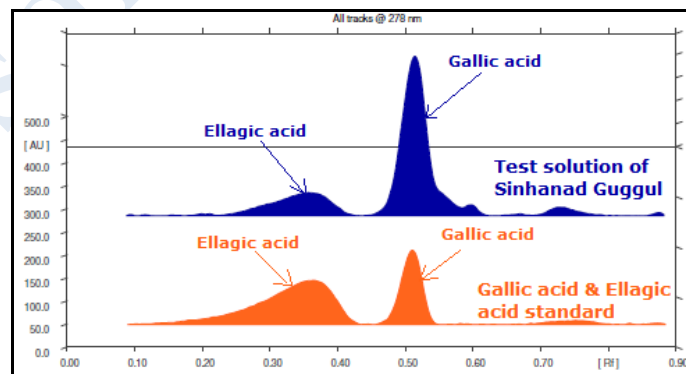
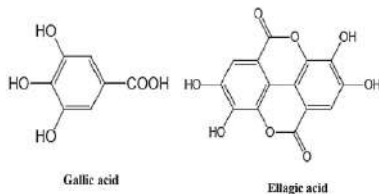
i) Guggulsterone (E & Z)

When examined in the range of 200 nm to 400 nm, the test solution shows absorption maxima at about 252 nm corresponding with Guggulsterone (E & Z) standard.



**ii) Total Polyphenols
(as Gallic acid & Ellagic acid)**

When examined in the range of 200 nm to 400 nm, the test solution shows absorption maxima at about 290 nm for Gallic acid & 278 nm for Ellagic acid corresponding with Gallic acid & Ellagic acid standard.



E. coli	Absent/g
P. aeruginosa	Absent/g
Salmonella sp.	Absent/g
Staphylococcus sp.	Absent/g
Total Microbial Plate Count (TPC)	NMT 10 ⁵ c.f.u./g
Total Yeast & Mould Count (TYMC)	NMT 10 ³ c.f.u./g
Pesticide Residue[†] (OC+OP)	Complies as per API
Aflatoxins B1,B2,G1,G2[†]	Complies as per API