

SHATAVARI KALPA GRANULES

Monograph No. – 070253 ver 3.0

Issue No: 03

Date of Issue: 28/10/2016

Text Reference : Ayurvedic Proprietary Medicine

Amendment No : 01

Amendment Date : 13/11/2023

Shelf Life: 3 years

Description

Light brown to brown colour granules, taste sweet & slight bitter, resembling taste of shatavari, odour slight of velchi.



Loss on Drying at 105°

Not more than 5 % w/w

Ash

Not more than 0.5 % w/w

Acid Insoluble Ash

Not more than 0.2 % w/w

Water Soluble Extractive

Not less than 90 % w/w

pH (1% aqueous solution)

4.0 – 6.0

Thin Layer Chromatography

Solvent system

Ethyl acetate : Methanol : Water
(7.5 : 1.5 : 1)

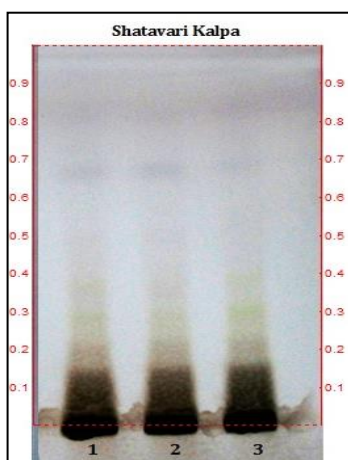
Details

Solvent of Extraction – Hexane > Methanol

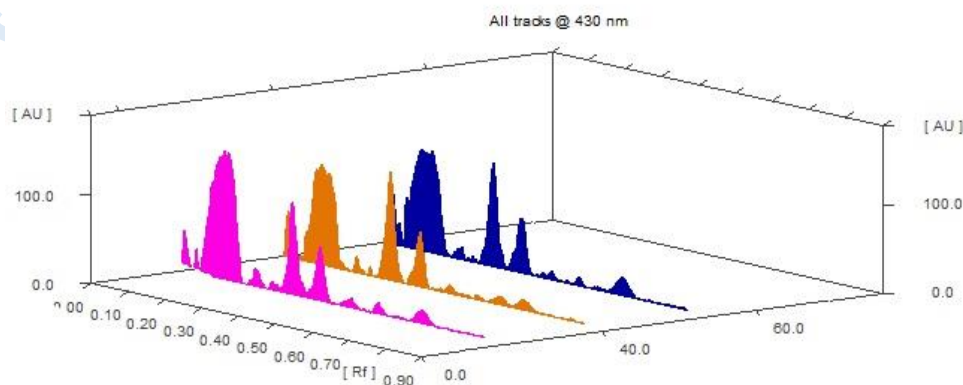
Solvent front – 90 mm

Total No. of Major spots – 4

Visualization – After spraying Anisaldehyde H₂SO₄



Major Spots	Colour	Approx. Rf.
1	Light brown	0.19
2	Brownish Yellow	0.28
3	Brownish Yellow	0.36
4	Gray	0.66



3D Peak Display of Shatavari Kalpa at 430 nm

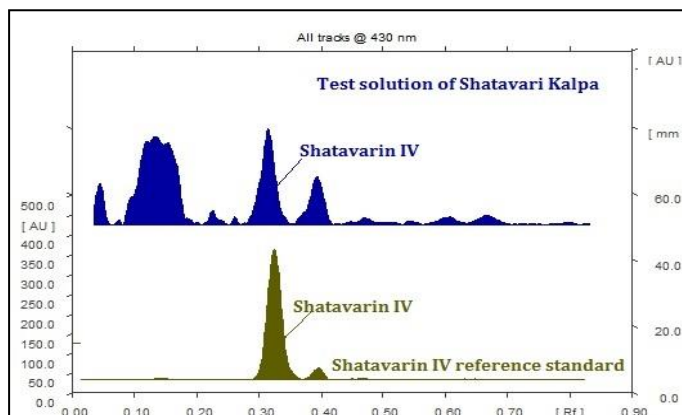
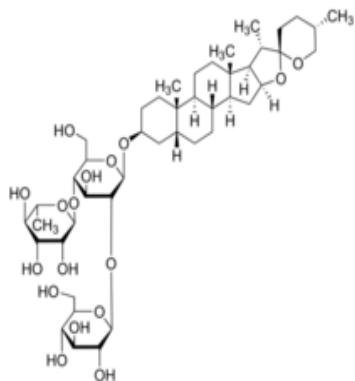
Confidential – photocopy prohibited

Note : † : These extra tests can be performed on every batch at extra cost. Tests can be ascertained on request.

HPTLC Profile [†]

i) Shatavarin IV

When examined in the range of 400 nm to 700 nm, the test solution shows absorption maxima at about 430 nm corresponding with Shatavarin IV standard.



Heavy metal

Lead (Pb)	Not more than 10 ppm
Mercury (Hg)	Not more than 1 ppm
Arsenic (As)	Not more than 3 ppm
Cadmium (Cd)	Not more than 0.3 ppm
<i>E. coli</i>	Absent/g
<i>P. aeruginosa</i>	Absent/g
<i>Salmonella sp.</i>	Absent/g
<i>Staphylococcus sp.</i>	Absent/g
Total Microbial plate count (TPC)	Not more than 10 ⁵ c.f.u./g
Total Yeast & Mould count (TYMC)	Not more than 10 ³ c.f.u./g
Pesticide Residue [†] (OC+OP)	Complies as per API
Aflatoxins B1,B2,G1,G2 [†]	Complies as per API

Confidential – photocopy prohibited

Note : [†] : These extra tests can be performed on every batch at extra cost. Tests can be ascertained on request.