

RASA PARPATI

Monograph No. – 080027 ver 3.0

Issue No: 03

Date of Issue: 02/07/2018

Text Reference : Bhaishajya Ratnavali (Grahani) 8/402-441

Amendment No : 00

Amendment Date : --

Shelf Life: - 10 years

Description

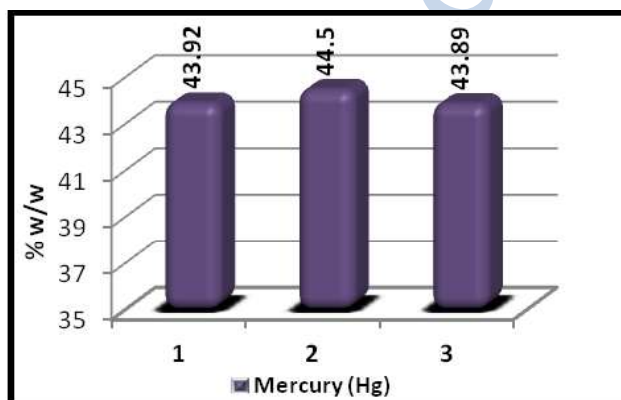
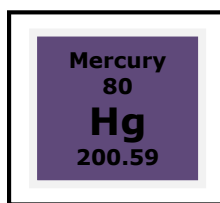
A fine powder, Gray to Black colour, odourless, tasteless.



Elemental assay

Mercury (Hg)

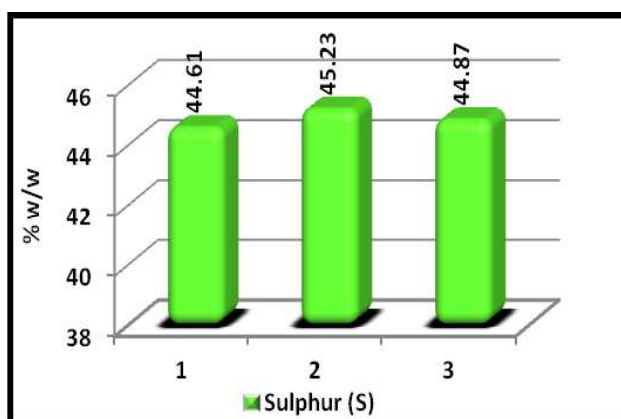
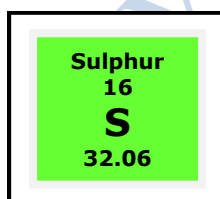
40 – 50 % w/w



Graphical Representation of Mercury Content in Rasa Parpati (Batch to Batch Consistency) by AAS

Sulphur (S)

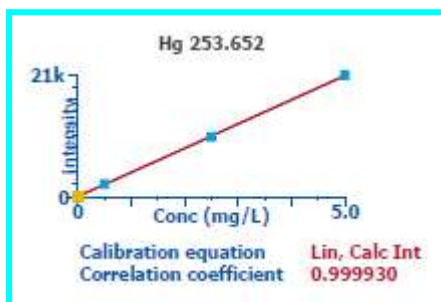
40 – 50 % w/w



Graphical Representation of Sulphur Content in Rasa Parpati (Batch to Batch Consistency)

Confidential - photocopy prohibited

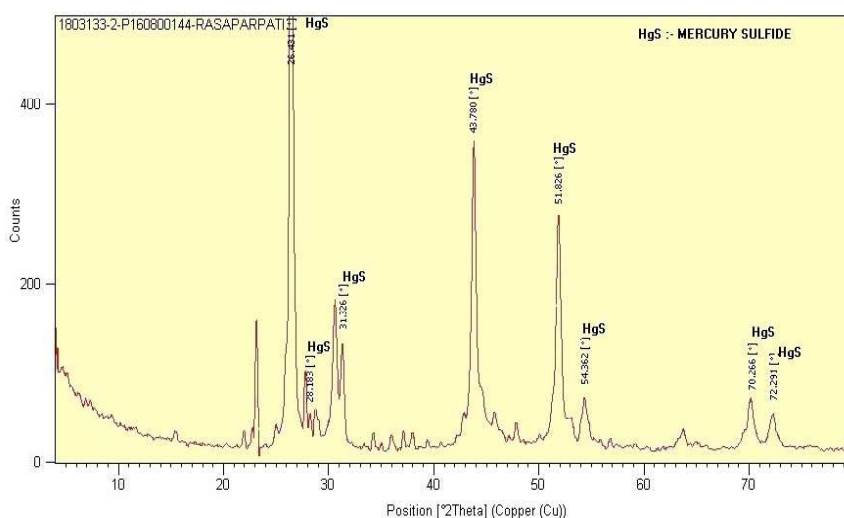
Note : [†] : These extra tests can be performed on every batch at extra cost. Tests can be ascertained on request.



Standard Linear Graph of Hg prepared in correlation with NIST Traceable Reference Standard

XRD Profile +

Confirms the presence of characteristic peak of HgS



E. coli	Absent/g
P. aeruginosa	Absent/g
Salmonella sp.	Absent/g
Staphylococcus sp.	Absent/g
Total Microbial plate count (TPC)	NMT 10 ⁵ c.f.u./g
Total Yeast & Mould count (TYMC)	NMT 10 ³ c.f.u./g
Pesticide Residue + (OC+OP)	Complies as per API
Aflatoxins B1,B2,G1,G2 +	Complies as per API