

## RAJAHPRAVARTANI VATI

**Monograph No. – 0500554 ver 3.0**

Issue No: 03

Date of Issue: 27/07/2017

Text Reference : Ayurved Sara Sangraha

Amendment No : 02

Amendment Date : 28/01/2025

Shelf Life: 5 years

### Description

Gray to black colour, round convex coated tablet having SDL mark on one side.

### Loss on Drying at 105°

Not more than 10 % w/w

### Friability

Not more than 1 % w/w

### Disintegration Time

Not more than 60 min.

### Hardness

Not less than 2 kg/cm<sup>2</sup>

### Thickness

4.5 ± 0.5 mm

### Diameter

12.0 ± 0.5 mm

### Average Weight

533 mg ± 5 %

### Uniformity of weight

Not more than 2 tablets deviate by more than 5% of the average weight and none by more than 10% of the average weight.

### Ash

Not more than 35 % w/w

### Acid insoluble ash

Not more than 5 % w/w

### Water soluble extractive

Not less than 20 % w/w

### Alcohol soluble extractive

Not less than 10 % w/w

### pH (1 % Aq. Solution)

6.5 - 8.5

### Elemental Assay

#### Iron (Fe)

Not less than 6 mg/tablet

### Thin Layer Chromatography Solvent system

Toluene : Ethyl acetate : Formic acid  
( 14 : 8 : 0.15 )

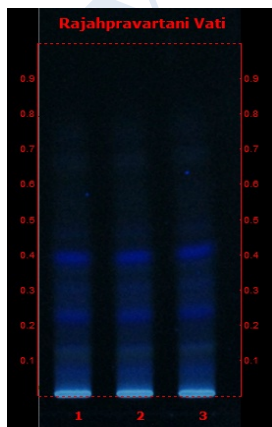
### Details

Solvent of Extraction – Methanol

Distance traveled by solvent front – 90 mm

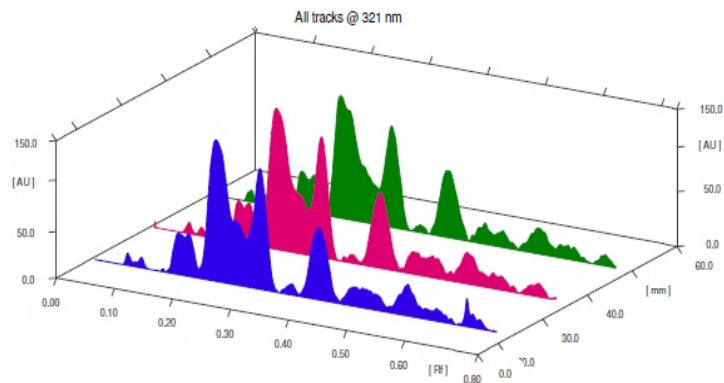
Total No. of Major spots – 8

Visualization – Under UV at 366nm



Major Spots	Colour	Approx. Rf.
1	Blue	0.06
2	Light Blue	0.12
3	Blue	0.22
4	Light Blue	0.30
5	Blue	0.39
6	Light Blue	0.45
7	Light Blue	0.67
8	Light Blue	0.76



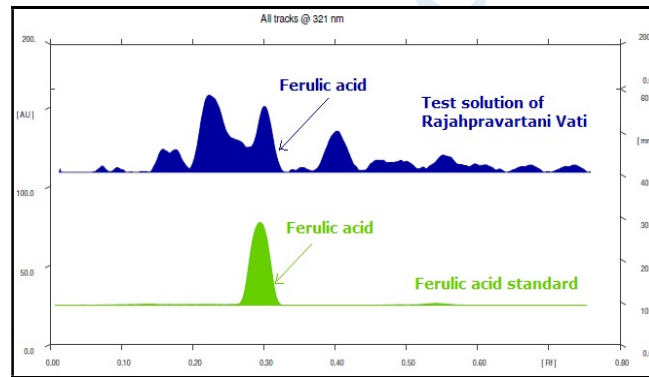
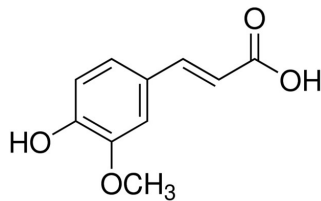


**3D Peak Display of Rajahpravartani Vati at 321 nm**

**HPTLC Profile<sup>†</sup>**

**i) Ferulic acid**

When examined in the range of 200 nm to 400 nm, the test solution shows absorption maxima at about 321 nm corresponding with Ferulic acid standard.



***E. coli***

Absent/g

***P. aeruginosa***

Absent/g

***Salmonella sp.***

Absent/g

***Staphylococcus sp.***

Absent/g

**Total Microbial plate count (TPC)**

Not more than 10<sup>5</sup> c.f.u./g

**Total Yeast & Mould count (TYMC)**

Not more than 10<sup>3</sup> c.f.u./g

**Pesticide Residue<sup>†</sup> (OC+OP)**

Complies as per API

**Aflatoxins B1,B2,G1,G2<sup>†</sup>**

Complies as per API