

MRITYUNJAYA RASA

Monograph No. 0800724 ver 3.0

Issue No: 03

Date of Issue: 14/12/2021

Text Reference : Bhaishajya Ratnavali – 5/510-513

Amendment No : 01

Amendment Date : 12/02/2024

Shelf Life: 5 years

Description

Peach pink colour, round convex coated tablet having SDL mark on one side.

Loss on Drying at 105°

Not more than 8 % w/w

Friability

Not more than 1 % w/w

Disintegration Time

Not more than 60 min.

Hardness

Not less than 2.0 kg/cm²

Thickness

3.0 ± 0.5 mm

Diameter

6.5 ± 0.5 mm

Average Weight

153 mg ± 7.5 %

Uniformity of weight

Not more than 2 tablets deviate by more than 7.5 % of the average weight and none by more than 15 % of the average weight.

Ash

Not more than 36.5 % w/w

Acid insoluble ash

Not more than 4.5 % w/w

Water soluble extractive

Not less than 15.0 % w/w

Alcohol soluble extractive

Not less than 1.5 % w/w

pH (1% Aq. solution)

7.5 – 9.5

Elemental Assay

Mercury (Hg)

Not less than 5.0 mg/tablet

Sulphur (S)

Not less than 4.0 mg/tablet

Thin Layer Chromatography Solvent system

Toluene : Ethyl acetate
(7 : 3)

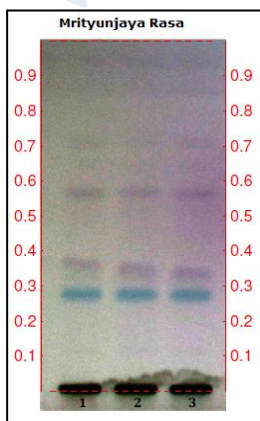
Details

Solvent of Extraction – Methanol

Solvent front – 90 mm

Total No. of Major spots – 4

Visualization – After derivatization with Anisaldehyde H₂SO₄

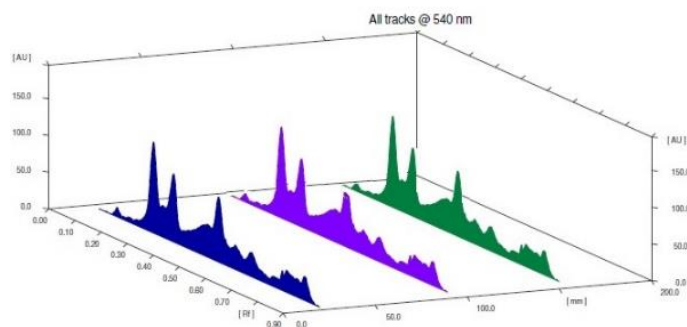


Major Spots	Colour	Approx. Rf.
1	Sky Blue	0.28
2	Violet	0.36
3	Violet	0.57
4	Light Violet	0.70

Confidential - photocopy prohibited

1

Note : † : These extra tests can be performed on every batch at extra cost. Tests can be ascertained on request.

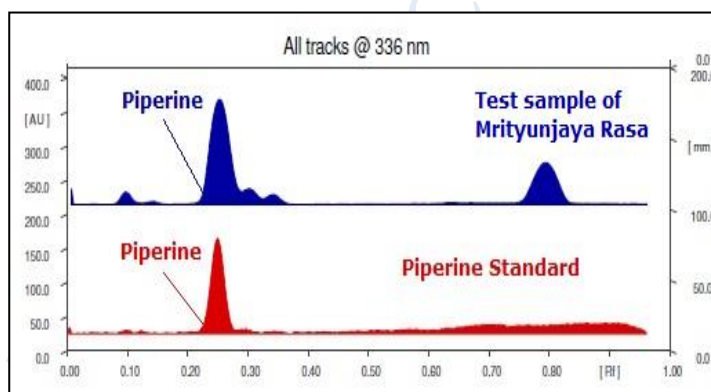
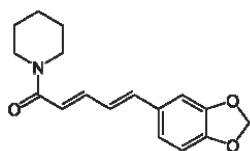


3D Peak Display of Mrityunjaya Rasa at 540 nm

HPTLC Profile[†]

i) Piperine

When examined in the range of 200 nm to 400 nm, the test solution shows absorption maxima at about 336 nm corresponding with Piperine standard.



E. coli

Absent/g

P. aeruginosa

Absent/g

Salmonella sp.

Absent/g

Staphylococcus sp.

Absent/g

Total Microbial plate count (TPC)

Not more than 10^5 c.f.u./g

Total Yeast & Mould count (TYMC)

Not more than 10^3 c.f.u./g

Pesticide Residue[†] (OC+OP)

Complies as per API

Aflatoxins B1,B2,G1,G2[†]

Complies as per API