

MEDHASAGAR RASA

Monograph No. – 1902674 ver 3.0

Issue No: 03

Date of Issue: 09/09/2021

Text Reference : Ayurvedic Proprietary Medicine

Amendment No : 01

Amendment Date : 28/11/2022

Shelf Life: 5 years

Description

Orange coloured, round biconvex film coated tablet having SDL mark on one side.

Loss on Drying at 105°

Not more than 8 % w/w

Hardness

Not less than 2.5 kg/cm²

Thickness

5.0 ± 0.5 mm

Diameter

12.5 ± 0.5 mm

Disintegration Time

Not more than 60 min.

Average Weight

655 mg ± 5 %

Uniformity of weight on 20 tablets

Not more than 2 tablets deviate by more than 5 % of the average weight and none by more than 10 % of the average weight

Ash

Not more than 30 % w/w

Acid Insoluble Ash

Not more than 10 % w/w

Water Soluble Extractive

Not less than 25 % w/w

Alcohol Soluble Extractive

Not less than 5 % w/w

Elemental assay

Gold (Au)

Not less than 1.3 mg/tab

Silver (Ag)

Not less than 1.2 mg/tab

Iron (Fe)

Not less than 1.5 mg/tab

Copper (Cu)

Not less than 8.0 mg/tab

Mercury (Hg)

Not less than 16.5 mg/tab

Sulphur (S)

Not less than 25.0 mg/tab

Calcium (Ca)

Not less than 20.0 mg/tab

Thin Layer Chromatography

Solvent system

Chloroform : Ethanol : Glacial Acetic acid
(9.4 : 0.5 : 0.1)

Details

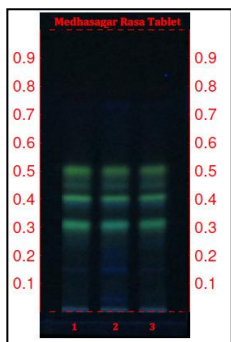
Solvent of Extraction – Methanol

Solvent front – 90 mm

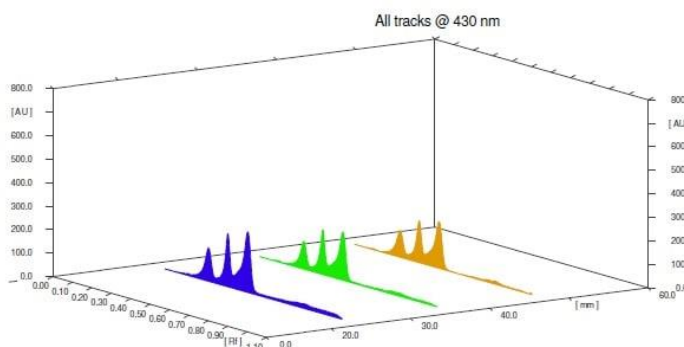
Total No. of Major spots – 5

Detection – Under UV at 366 nm





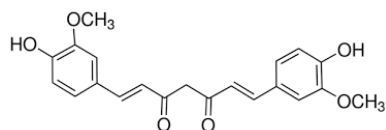
Major Spots	Colour	Approx. Rf.
1	Florescent Blue	0.15
2	Yellow	0.31
3	Yellow	0.40
4	Bluish Yellow	0.45
5	Yellow	0.50



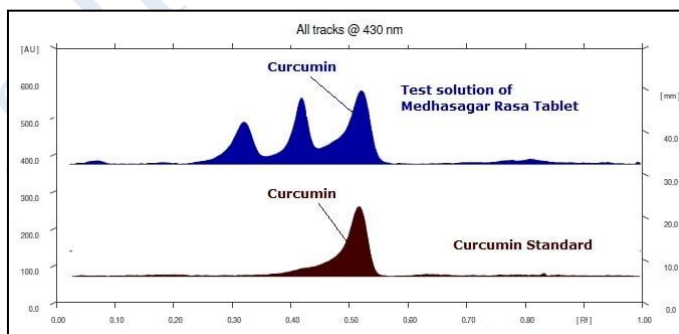
3D Peak Display of Medhasagar Rasa Tablet at 430 nm

HPTLC Profile[†]

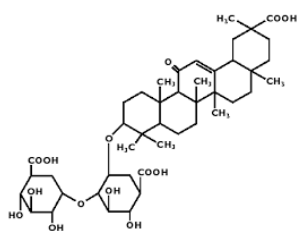
i) Curcumin



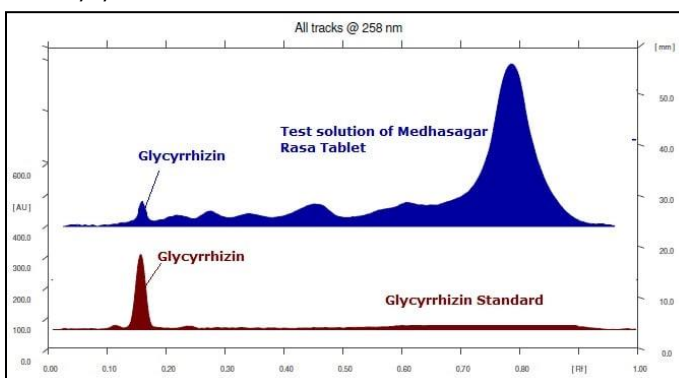
When examined in the range of 400 nm to 700 nm, the test solution shows absorption maxima at about 430 nm corresponding with Curcumin standard



ii) Glycyrrhizin



When examined in the range of 200 nm to 400 nm, the test solution shows absorption maxima at about 258 nm corresponding with Glycyrrhizin standard



Confidential - photocopy prohibited

Note : [†] : These extra tests can be performed on every batch at extra cost. Tests can be ascertained on request.

E. coli	Absent/g
P. aeruginosa	Absent/g
Salmonella sp.	Absent/g
Staphylococcus sp.	Absent/g
Total Microbial plate Count (TPC)	NMT 10 ⁵ c.f.u./g
Total Yeast & Mould Count (TYMC)	NMT 10 ³ c.f.u./g
Pesticide Residue [†] (OC+OP)	Complies as per API
Aflatoxins B1,B2,G1,G2 [†]	Complies as per API