

MADHUMEHA KUSUMAKAR RASA

Monograph No. – 1902614 ver 3.0

Issue No: 03

Date of Issue: 28/10/2016

Text Reference : Ayurvedic Proprietary Medicine

Amendment No : 00

Amendment Date : --

Shelf Life: 5 years

Description

Dark blue colour, round biconvex film coated tablets with SDL mark on one side.

Loss on Drying at 105°

Not more than 6 % w/w

Hardness

Not less than 2.5 kg/cm²

Thickness

5.5 ± 0.5 mm

Diameter

12.10 ± 0.3 mm

Disintegration Time

Not more than 60 min.

Average Weight

655 mg ± 5 %

Uniformity of weight of 20 tablets

Not more than 2 tablets deviate by more than 5% of the average weight and none by more than 10% of the average weight.

Ash

Not more than 25 % w/w

Acid insoluble ash

Not more than 10 % w/w

Water soluble extractive

Not less than 25 % w/w

Alcohol soluble extractive

Not less than 15 % w/w

Elemental assay

Gold (Au)

0.40 – 0.70 mg/tab

Zinc (Zn)

2 – 4 mg/tab

Lead (Pb)

0.5 – 1.0 mg/tab

Mercury (Hg)

0.8 – 1.2 mg/tab

Thin Layer Chromatography Solvent system

Chloroform : Ethanol : Glacial acetic acid
(9.4 : 0.5 : 0.1)

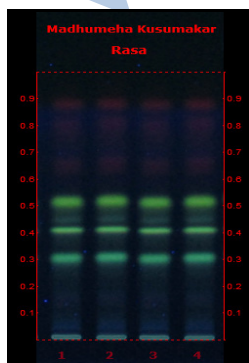
Details

Solvent of Extraction – Methanol

Solvent front – 90 mm

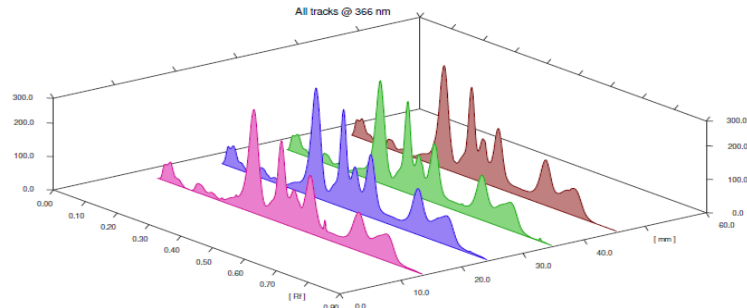
Total No. of Major spots – 7

Detection – Under UV at 366 nm



Major Spots	Colour	Approx. Rf.
1	Yellow	0.30
2	Yellow	0.41
3	Light yellow	0.45
4	Yellow	0.52
5	Light red	0.66
6	Light red	0.80
7	Red	0.88

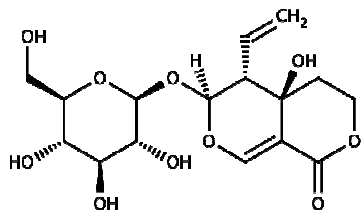




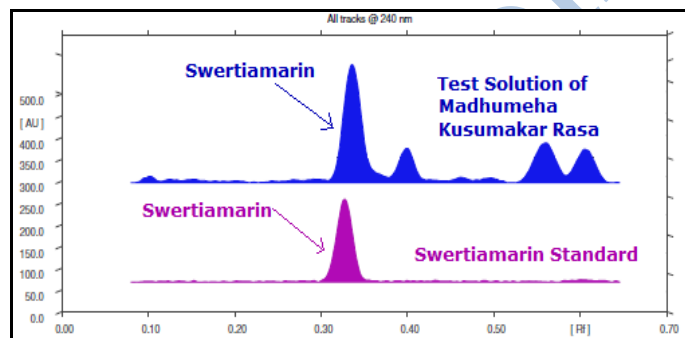
3D Peak Display of Madhumeha Kusumakar Rasa at 366 nm

HPTLC Profile

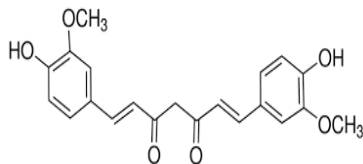
i) Swertiamarin



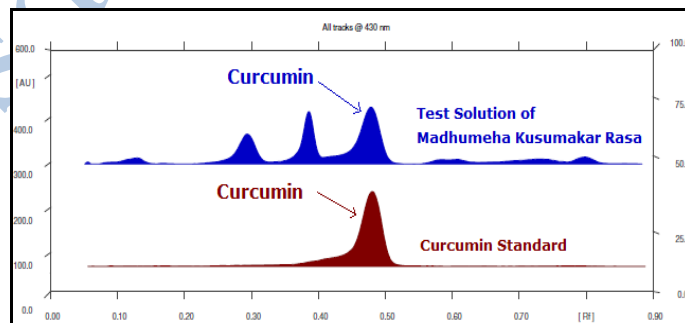
When examined in the range of 200 nm to 400 nm, the test solution shows absorption maxima at about 240 nm corresponding with Swertiamarin standard.



ii) Curcumin



When examined in the range of 200 nm to 700 nm, the test solution shows absorption maxima at about 430 nm corresponding with Curcumin standard.



E. coli [†]	Absent/g
P. aeruginosa [†]	Absent/g
Salmonella sp. [†]	Absent/g
Staphylococcus sp. [†]	Absent/g
Total Microbial plate count (TPC) [†]	NMT 10 ⁵ c.f.u./g
Total Yeast & Mould count [†]	NMT 10 ³ c.f.u./g
Pesticide Residue [†] (OC+OP)	Complies as per API
Aflatoxins B1,B2,G1,G2 [†]	Complies as per API