

LAKSHADI GUGGUL

Monograph No. – 0400144 ver 3.0

Issue No: 03

Amendment No : 03

Date of Issue: 28/10/2016

Amendment Date : 22/03/2024

Text Reference : Bhavaprakash Madhyam Khanda (Bhagna) 34

Shelf Life: 5 years

Description

Light Brown to Dark brown colour, round biconvex coated tablet having SDL mark on one side.



Loss on Drying at 105°

Not more than 8 % w/w

Friability

Not more than 1 % w/w

Disintegration Time

Not more than 60 min.

Hardness

Not less than 1.5 kg/cm²

Thickness

5.0 ± 0.5 mm

Diameter

8.0 ± 0.5 mm

Average Weight

295 mg ± 5%

Uniformity of weight

Not more than 2 tablets deviate by more than 5% of the average weight and none by more than 10% of the average weight.

Ash

Not more than 36.0 % w/w

Acid insoluble ash

Not more than 8.0 % w/w

Water soluble extractive

Not less than 12.5 % w/w

Alcohol soluble extractive

Not less than 15.0 % w/w

pH (1% Aq. Solution)

5.0 – 7.0

Thin Layer Chromatography Solvent system

Toluene : Acetone
(9.0 : 1.0)

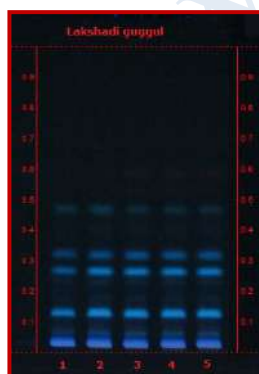
Details

Solvent of Extraction – Methanol

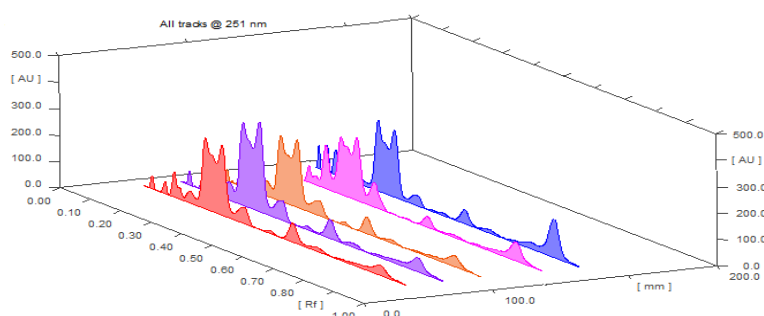
Solvent front – 90 mm

Total No. of Major spots – 6

Detection – Under UV at 366 nm



Major Spots	Colour	Approx. Rf.
1	Light Blue	0.05
2	Fluorescent Blue	0.12
3	Fluorescent Blue	0.27
4	Fluorescent Blue	0.34
5	Light Blue	0.50
6	Light Red	0.63

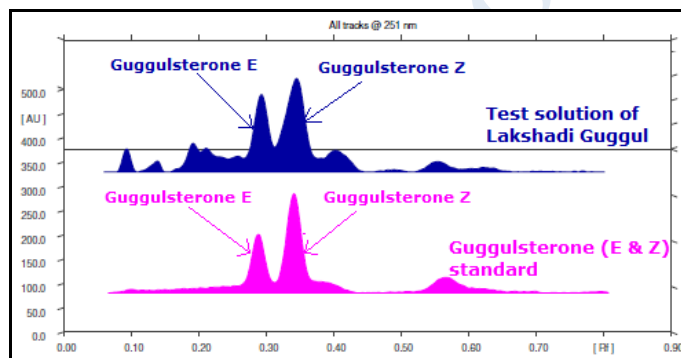
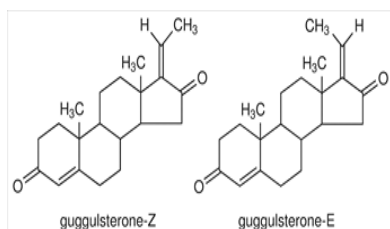


3D Peak Display of Lakshadi Guggul at 251 nm

HPTLC Profile[†]

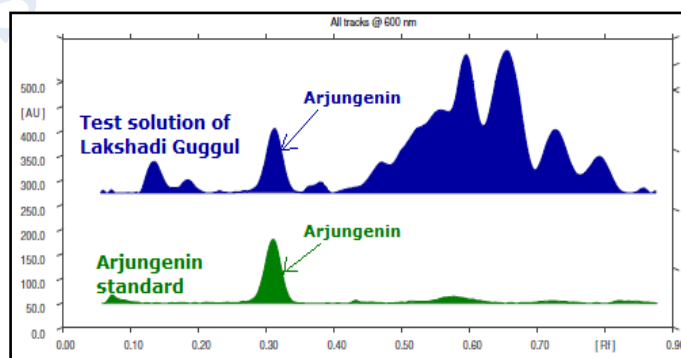
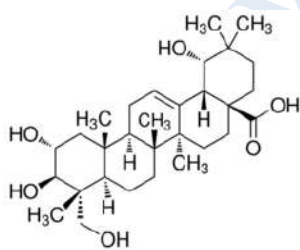
i) Guggulsterone (E & Z)

When examined in the range of 200 nm to 400 nm, the test solution shows absorption maxima at about 251 nm corresponding with Guggulsterone (E & Z) standard.



ii) Arjungenin

When examined in the range of 400 nm to 700 nm, the test solution shows absorption maxima at about 600 nm corresponding with Arjungenin standard.



Heavy metal

Lead (Pb)	NMT 10 ppm
Mercury (Hg)	NMT 1 ppm
Arsenic (As)	NMT 3 ppm
Cadmium (Cd)	NMT 0.3 ppm

<i>E. coli</i>	Absent/g
<i>P. aeruginosa</i>	Absent/g
<i>Salmonella sp.</i>	Absent/g
<i>Staphylococcus sp.</i>	Absent/g
Total Microbial Plate Count (TPC)	NMT 10 ⁵ c.f.u./g
Total Yeast & Mould Count (TYMC)	NMT 10 ³ c.f.u./g
Pesticide Residue [†] (OC+OP)	Complies as per API
Aflatoxins B1,B2,G1,G2 [†]	Complies as per API