

## KRUMIKUTHAR RASA

Monograph No. – 0800294 ver 3.0

Issue No: 03

Date of Issue: 28/10/2016

Text Reference : Nighantu Ratnakar (Krumi)

Amendment No : 04

Amendment Date : 24/01/2025

Shelf Life: 5 years

### Description

Brown to dark brown colour, round convex coated tablet having SDL mark on one side.

### Loss on Drying at 105°

Not more than 15 % w/w

### Friability

Not more than 1 % w/w

### Disintegration Time

Not more than 60 min.

### Hardness

Not less than 2 kg/cm<sup>2</sup>

### Thickness

5.0 ± 0.5 mm

### Diameter

8.0 ± 0.5 mm

### Average Weight

245 - 282 mg

### Uniformity of weight

Not more than 2 tablets deviate by more than 5% of the Average Weight and none by more than 10% of the Average Weight.

### Ash

Not more than 25 % w/w

### Acid insoluble ash

Not more than 5 % w/w

### Water soluble extractive

Not less than 20 % w/w

### Alcohol soluble extractive

Not less than 20 % w/w

### pH (1 % Aq. Solution)

4.5 - 5.5

### Elemental Assay

#### Mercury (Hg)

2.0 – 6.0 mg/tablet

#### Sulphur (S)

0.80 – 1.20 mg/tablet

### Thin Layer Chromatography Solvent system

Chloroform : Hexane : Acetonitrile  
( 5 : 4.6 : 0.4 )

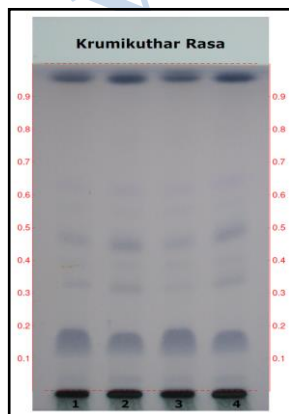
### Details

Solvent of Extraction – Methanol

Solvent front – 90 mm

Total No. of Major spots – 8

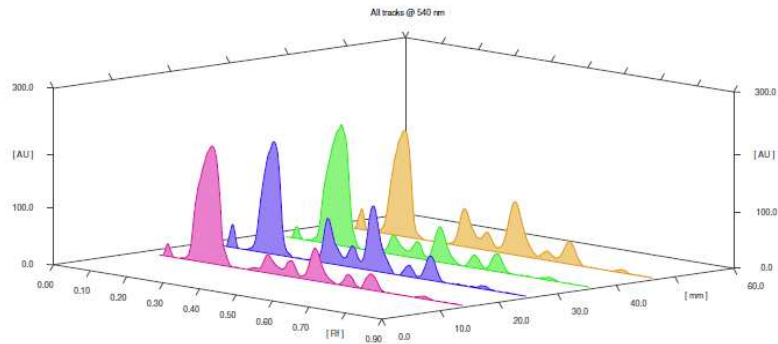
Visualization – After spraying Anisaldehyde H<sub>2</sub>SO<sub>4</sub>



Major Spots	Colour	Approx. Rf.
1	Gray	0.04
2	Violet	0.15
3	Gray	0.33
4	Light Gray	0.39
5	Gray	0.44
6	Light Gray	0.54
7	Light Purple	0.62
8	Black	0.94

**Confidential – photocopy prohibited**

Note : † : These extra tests can be performed on every batch at extra cost. Tests can be ascertained on request.

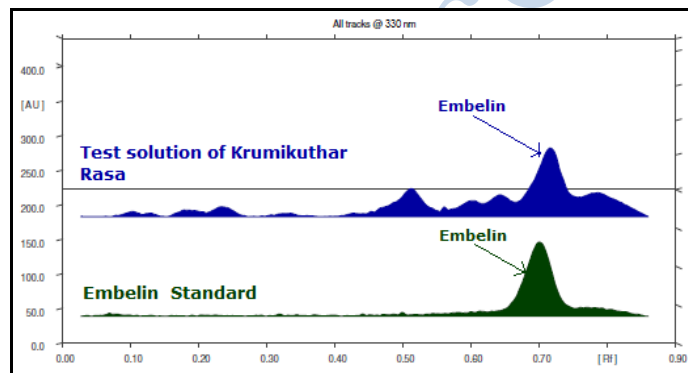
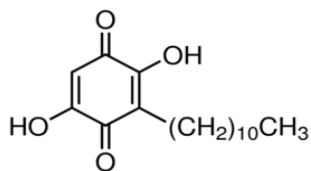


**3D Peak Display of Krumikuthar Rasa at 540 nm**

**HPTLC Profile<sup>†</sup>**

**i) Embelin**

When examined in the range of 200 nm to 400 nm, the test solution shows absorption maxima at about 330 nm corresponding with Embelin standard.



***E. coli***

Absent/g

***P. aeruginosa***

Absent/g

***Salmonella sp.***

Absent/g

***Staphylococcus sp.***

Absent/g

**Total Microbial plate count (TPC)**

Not more than 10<sup>5</sup> c.f.u./g

**Total Yeast & Mould count (TYMC)**

Not more than 10<sup>3</sup> c.f.u./g

**Pesticide Residue<sup>†</sup> (OC+OP)**

Complies as per API

**Aflatoxins B1,B2,G1,G2<sup>†</sup>**

Complies as per API

**Confidential – photocopy prohibited**

Note : <sup>†</sup> : These extra tests can be performed on every batch at extra cost. Tests can be ascertained on request.