

KAHARAVA PISHTI TABLET

Monograph No. – 0600034 ver 3.0

Issue No: 03

Date of Issue: 08/11/2021

Text Reference : Ayurved Sar Sangrah

Amendment No : 02

Amendment Date : 18/07/2024

Shelf Life: 10 years

Description

Cream to Light gray colour round biconvex coated tablet having SDL mark on one side.



Loss on Drying at 105°

Not more than 6 % w/w

Friability

Not more than 1 % w/w

Disintegration Time

Not more than 60 min.

Hardness

Not less than 2 kg/cm²

Thickness

5.5 ± 0.5 mm

Diameter

12.0 ± 0.5 mm

Average Weight

530 mg ± 5 %

Uniformity of weight

Not more than 2 tablets deviate by more than 5 % of the average weight and none by more than 10 % of the average weight

Ash

Not more than 20.0 % w/w

Acid insoluble ash

Not more than 6.0 % w/w

Water soluble extractive

Not more less 8.0 % w/w

Alcohol soluble extractive

Not more less 10.0 % w/w

pH (1% aq. solution)

6.5 - 8.0

Thin Layer Chromatography Mobile Phase

Toluene : Ethyl Acetate
(9.3 : 0.7)

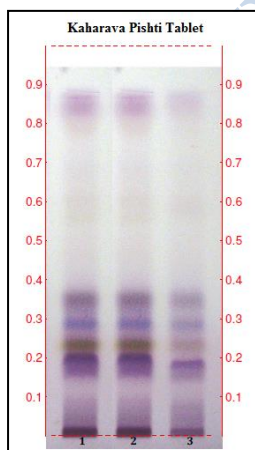
Details

Solvent of Extraction – Hexane

Distance traveled by solvent front – 90 mm

Total No. of Major spots – 5

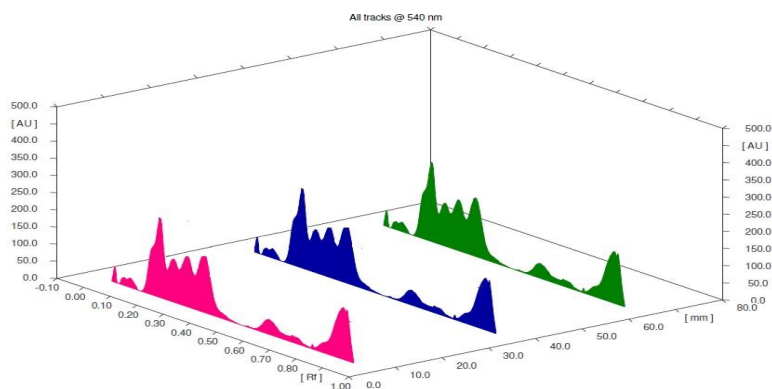
Detection – After spraying with Anisaldehyde H₂SO₄



Major Spots	Color	Approx. Rf.
1	Purple	0.20
2	Light Green	0.24
3	Violet	0.29
4	Purple	0.35
5	Light purple	0.85

Confidential – photocopy prohibited

Note : † : These extra tests can be performed on every batch at extra cost. Tests can be ascertained on request.



3D Peak Display of Kaharava Pishti Tablet at 540 nm

Heavy metal

Lead (Pb) NMT 10 ppm

Mercury (Hg) NMT 1 ppm

Arsenic (As) NMT 3 ppm

Cadmium (Cd) NMT 0.3 ppm

E. coli Absent/g

P. aeruginosa Absent/g

Salmonella sp. Absent/g

Staphylococcus sp. Absent/g

Total Microbial plate count (TPC) NMT 10^5 c.f.u./g

Total Yeast & Mould count (TYMC) NMT 10^3 c.f.u./g

Pesticide Residue[†] (OC+OP) Complies as per API

Aflatoxins B1,B2,G1,G2[†] Complies as per API

Confidential – photocopy prohibited

Note : [†] : These extra tests can be performed on every batch at extra cost. Tests can be ascertained on request.