

## JAYAMANGAL RASA (TABLET) (PREMIUM)

Monograph No. – 0900074 ver 3.0

Issue No: 03

Date of Issue: 09/09/2017

Text Reference : Bhaishajya Ratnavali (Jwara) 5/1061-1069

Amendment No : 02

Amendment Date : 25/11/2021

Shelf Life: 5 years

### Description

Brown to Dark brown colour, round convex coated tablet having SDL mark on one side.

### Loss on Drying at 105°

Not more than 5 % w/w

### Friability

Not more than 1 % w/w

### Disintegration Time

Not more than 60 min.

### Hardness

Not less than 1.5 kg/cm<sup>2</sup>

### Thickness

3.0 ± 0.5 mm

### Diameter

6.5 ± 0.5 mm

### Average Weight

154 mg ± 7.5 %

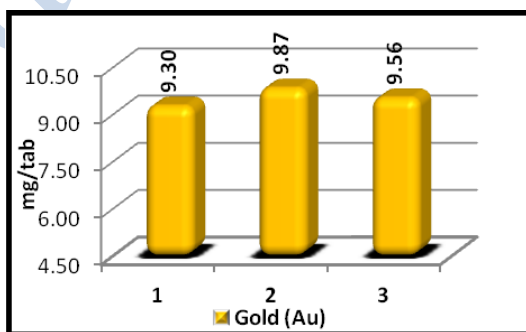
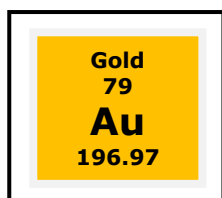
### Uniformity of weight of 20 tablets

Not more than two of the individual weights deviate from the average weight by more than 7.5 %.

### Elemental assay

#### Gold (Au)

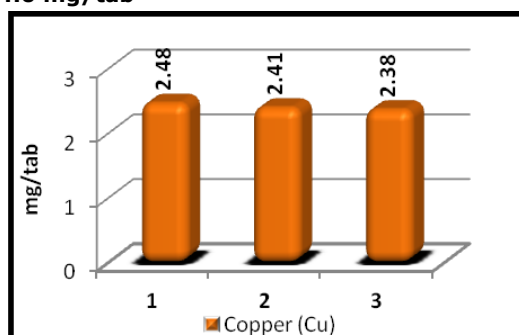
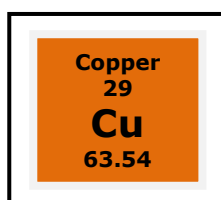
8.0 – 11.0 mg/tab



Graphical Representation of Gold Content in Jaymangal Rasa (Batch to Batch Consistency) by ICP-OES

#### Copper (Cu)

2.0 – 4.0 mg/tab



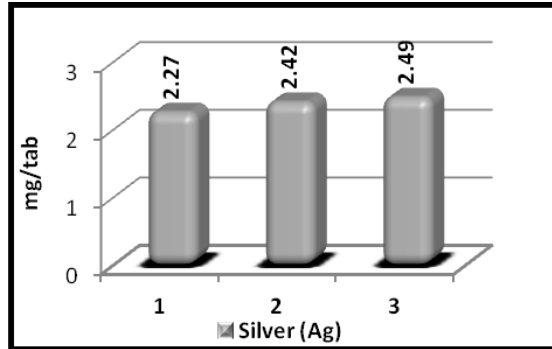
Graphical Representation of Copper Content in Jaymangal Rasa (Batch to Batch Consistency) by ICP-OES

Confidential - photocopy prohibited

Note : † : These extra tests can be performed on every batch at extra cost. Tests can be ascertained on request.

## Silver (Ag)

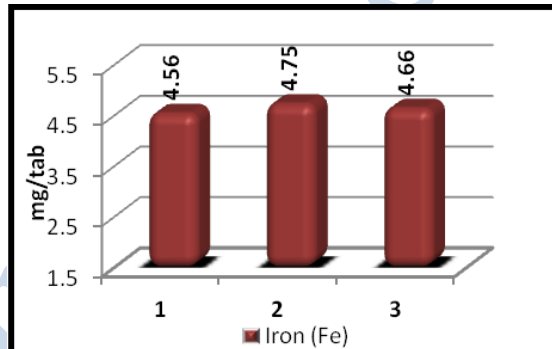
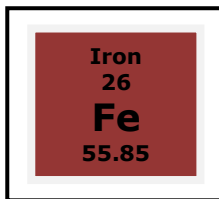
2.0 – 5.0 mg/tab



Graphical Representation of Silver Content in Jaymangal Rasa (Batch to Batch Consistency) by ICP-OES

## Iron (Fe)

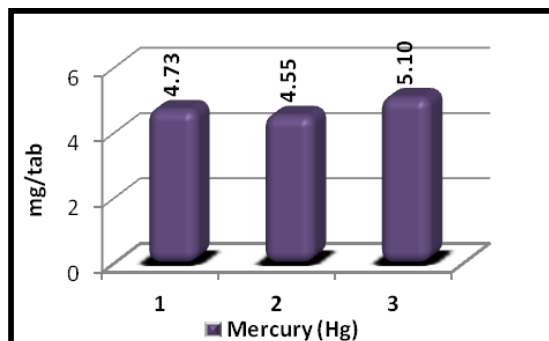
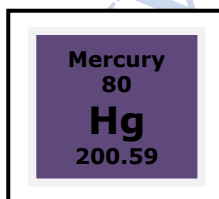
4.0 – 7.0 mg/tab



Graphical Representation of Iron Content in Jaymangal Rasa (Batch to Batch Consistency) by ICP-OES

## Mercury (Hg)

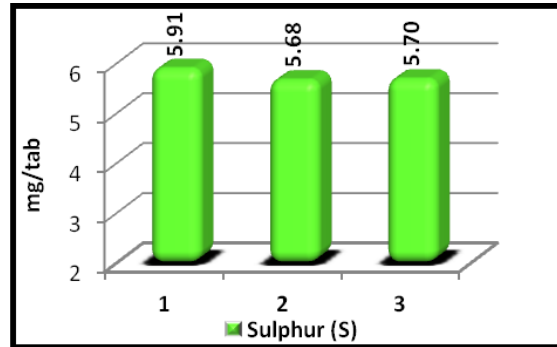
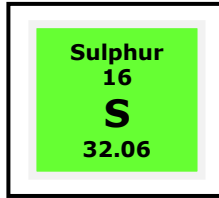
3.0 – 6.0 mg/tab



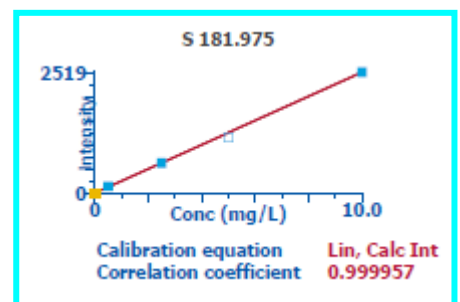
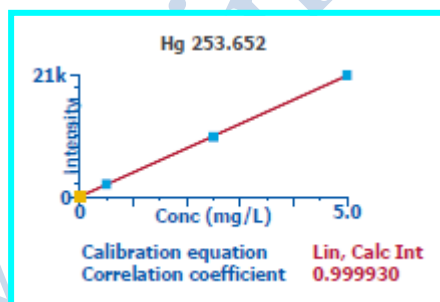
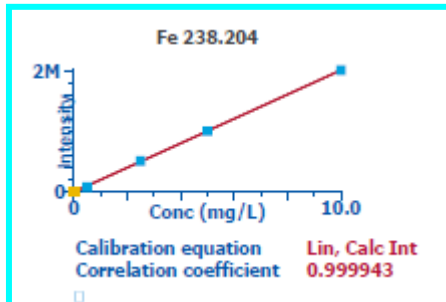
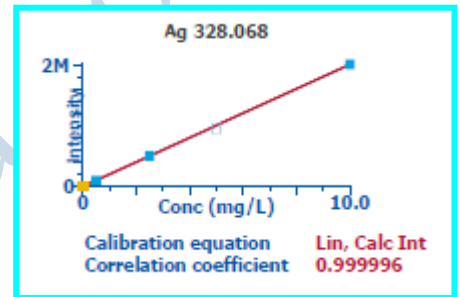
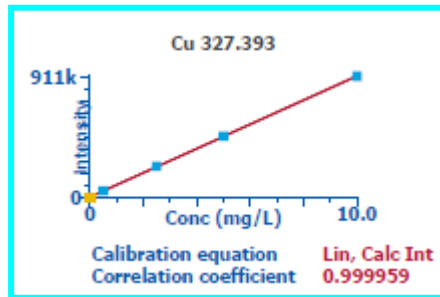
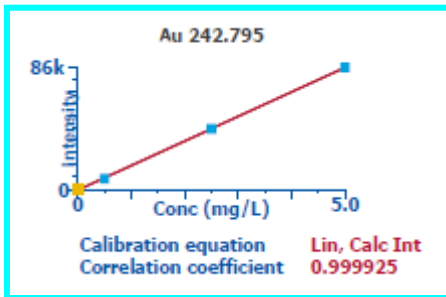
Graphical Representation of Mercury Content in Jaymangal Rasa (Batch to Batch Consistency) by ICP-OES

## Sulphur (S)

4.0 – 9.0 mg/tab



Graphical Representation of Sulphur Content in Jaymangal Rasa (Batch to Batch Consistency) by ICP-OES



Standard Linear Graph of Au, Cu, Ag, Fe, Hg & S prepared in correlation with NIST Traceable Reference Standard

<b>Acute Toxicity</b>	Nontoxic when single dose (10 x therapeutic dose) administered orally
<b>E. coli</b>	Absent/g
<b>P. aeruginosa</b>	Absent/g
<b>Salmonella sp.</b>	Absent/g
<b>Staphylococcus sp.</b>	Absent/g
<b>Total Microbial plate count (TPC)</b>	NMT 10 <sup>5</sup> c.f.u./g
<b>Total Yeast &amp; Mould Count (TYMC)</b>	NMT 10 <sup>3</sup> c.f.u./g
<b>Pesticide Residue<sup>†</sup> (OC+OP)</b>	Complies as per API
<b>Aflatoxins B1,B2,G1,G2<sup>†</sup></b>	Complies as per API