

HRUDROGA CHINTAMANI RASA

Monograph No. – 1902594 ver 3.0

Issue No: 03

Date of Issue: 28/10/2016

Text Reference : Ayurvedic Proprietary Medicine

Amendment No : 01

Amendment Date : 05/03/2025

Shelf Life: 5 years

Description

Brick red colour, round biconvex film coated tablets with SDL mark on one side.

Loss on Drying at 105°

Not more than 6 % w/w

Friability

Not more than 1 % w/w

Disintegration Time

Not more than 60 min.

Hardness

Not less than 2.5 kg/cm²

Thickness

4.5 ± 0.5 mm

Diameter

8.0 ± 0.5 mm

Average Weight

312 mg ± 5 %

Uniformity of weight

Not more than 2 tablets deviate by more than 5% of the average weight and none by more than 10% of the average weight.

Ash

Not more than 40 % w/w

Acid insoluble ash

Not more than 25 % w/w

Water soluble extractive

Not less than 15 % w/w

Alcohol soluble extractive

Not less than 1 % w/w

pH (1% Aq. solution)

6.0 – 7.5

Elemental assay

Gold (Au)

0.9 – 1.5 mg/tablet

Silver (Ag)

0.5 – 1.0 mg/tablet

Iron (Fe)

2.5 – 7.0 mg/tablet

Mercury (Hg)

23.0 – 29.0 mg/tablet

Thin Layer Chromatography

Solvent system

Toluene : Ethyl acetate : Acetic acid
(5 : 5 : 0.5)

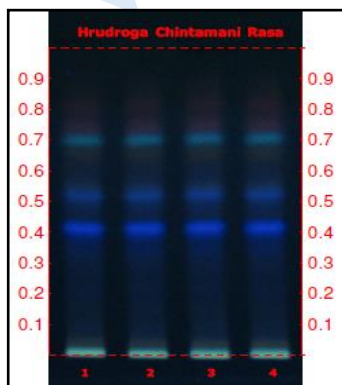
Solvent of Extraction – Methanol

Solvent front – 90 mm

Total No. of Major spots – 5

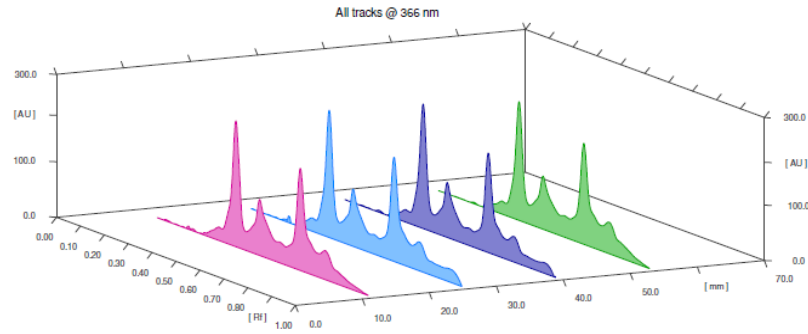
Visualization – Under UV at 366 nm

Details



Major Spots	Colour	Approx. Rf.
1	Fluorescent Blue	0.41
2	Blue	0.52
3	Sky Blue	0.69
4	Light Pink	0.75
5	Light Pink	0.81

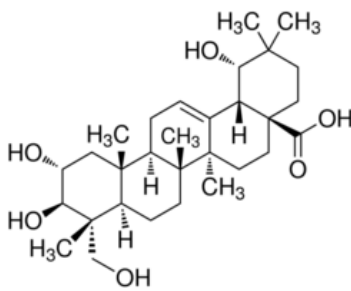




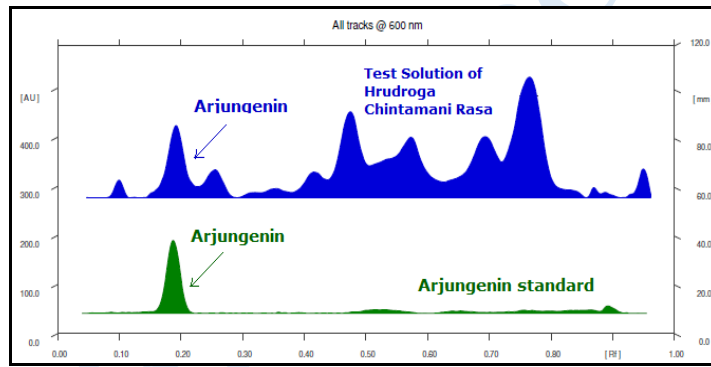
3D Peak Display of Hrudroga Chintamani Rasa at 366 nm

HPTLC Profile [†]

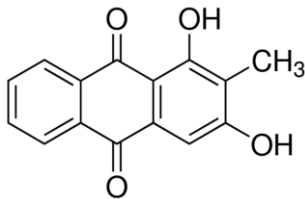
i) Arjungenin



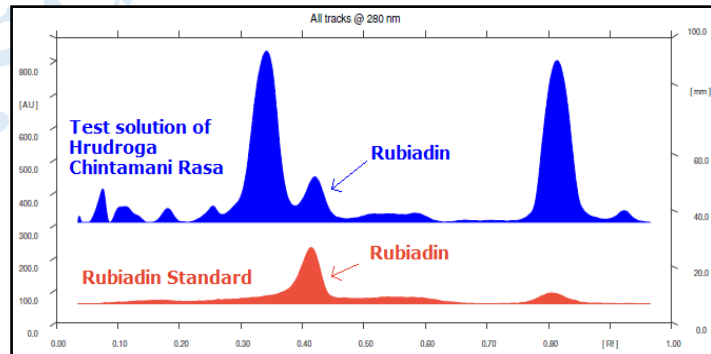
When examined in the range of 400 nm to 700 nm, the test solution shows absorption maxima at about 600 nm corresponding with Arjungenin standard.



ii) Rubiadin



When examined in the range of 200 nm to 400 nm, the test solution shows absorption maxima at about 280 nm corresponding with Rubiadin standard.



<i>E. coli</i>	Absent/g
<i>P. aeruginosa</i>	Absent/g
<i>Salmonella sp.</i>	Absent/g
<i>Staphylococcus sp.</i>	Absent/g
Total Microbial plate count (TPC)	Not more than 10 ⁵ c.f.u./g
Total Yeast & Mould count (TYMC)	Not more than 10 ³ c.f.u./g
Pesticide Residue [†] (OC+OP)	Complies as per API
Aflatoxins B1,B2,G1,G2 [†]	Complies as per API