

HINGWASHTAK CHOORNA

Monograph No. – 030009 ver 3.0

Issue No: 03

Date of Issue: 28/03/2017

Text Reference : Bhaishajya Ratnavali (Agnimandyadi) 10/59

Amendment No : 02

Amendment Date : 16/12/2024

Shelf Life: 2 years

Description

Moderately fine to fine powder, Yellowish Brown colour, odour aromatic, taste spicy & acrid.

Loss on Drying at 105°

Not more than 10 % w/w

Ash

Not more than 25 % w/w

Acid Insoluble Ash

Not more than 4 % w/w

Water Soluble Extractive

Not less than 20 % w/w

Alcohol Soluble Extractive

Not less than 10 % w/w

Bulk Density

0.45 - 0.65 g/ml

pH (10% Aq. solution)

5.0 – 7.0

Thin Layer Chromatography Solvent system

Toluene : Ethyl acetate
(7 : 3)

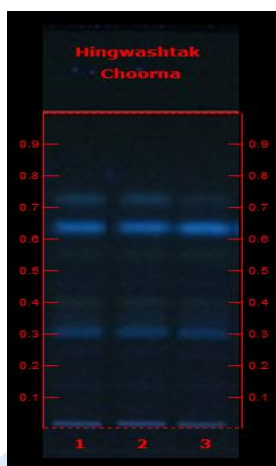
Details

Solvent of Extraction – Methanol

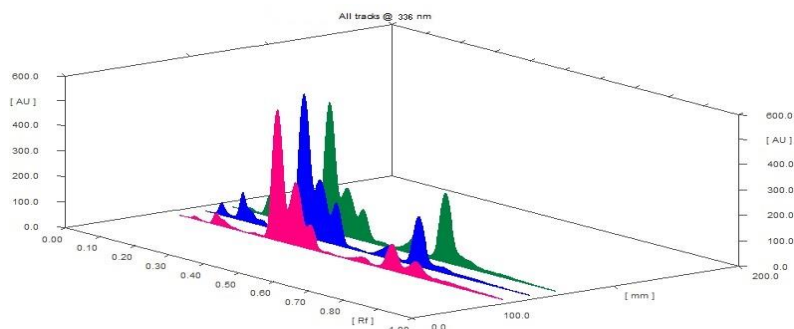
Solvent front – 90 mm

Total No. of Major spots – 7

Detection – Under UV at 366 nm



Major Spots	Colour	Approx. Rf.
1	Light Blue	0.14
2	Light Blue	0.25
3	Light Blue	0.31
4	Gray	0.42
5	Gray	0.55
6	Fluorescent Blue	0.64
7	Light Blue	0.74



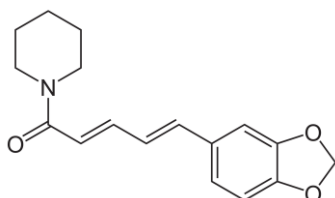
3D Peak Display of Hingwashtak Choorana at 336 nm

Confidential - photocopy prohibited

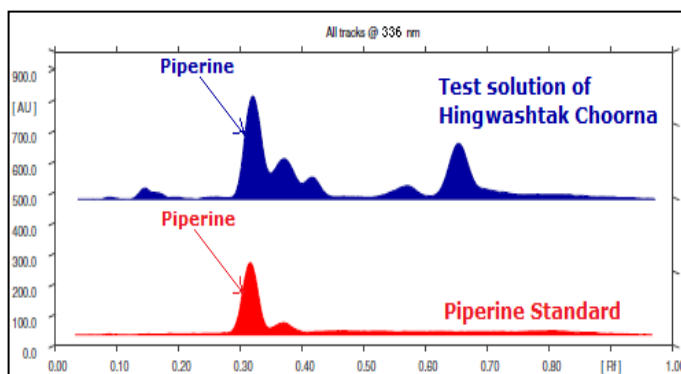
Note : † : These extra tests can be performed on every batch at extra cost. Tests can be ascertained on request.

HPTLC Profile[†]

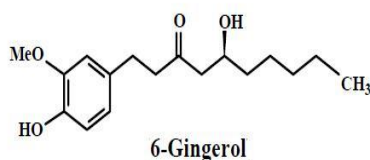
i) Piperine



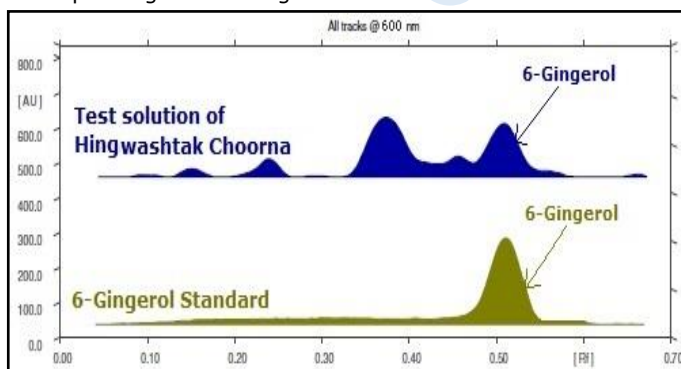
When examined in the range of 200 nm to 400 nm, the test solution shows absorption maxima at about 336 nm corresponding with Piperine standard.



ii) Gingerol



When examined in the range of 400 nm to 700 nm, the test solution shows absorption maxima at about 600 nm corresponding with 6-Gingerol standard.



Heavy metal

Lead (Pb)	NMT 10 ppm
Mercury (Hg)	NMT 1 ppm
Arsenic (As)	NMT 3 ppm
Cadmium (Cd)	NMT 0.3 ppm
<i>E. coli</i>	Absent/g
<i>P. aeruginosa</i>	Absent/g
<i>Salmonella sp.</i>	Absent/g
<i>Staphylococcus sp.</i>	Absent/g
Total Microbial plate count (TPC)	NMT 10 ⁵ c.f.u./g
Total Yeast & Mould count (TYMC)	NMT 10 ³ c.f.u./g
Pesticide Residue[†] (OC+OP)	Complies as per API
Aflatoxins B1,B2,G1,G2[†]	Complies as per API