

HINGWASHTAK CHOORNA VATI

Monograph No. – 0300094 ver 3.0

Issue No: 03

Amendment No : 01

Date of Issue: 28/03/2017

Amendment Date : 18/12/2024

Text Reference : Bhaishajya Ratnavali (Agnimandyadi) 10/59

Shelf Life: 3 years

Description

Yellowish brown coloured round biconvex coated tablets.

Loss on Drying at 105°

Not more than 7 % w/w

Friability

Not more than 1 % w/w

Disintegration Time

Not more than 60 min.

Hardness

Not less than 2.0 kg/cm²

Thickness

6.0 ± 0.5 mm

Diameter

12.0 - 12.5 mm

Average Weight

660 mg ± 5%

Uniformity of weight

Not more than 2 tablets deviate by more than 5% of the average weight and none by more than 10% of the average weight.

Ash

Not more than 35 % w/w

Acid insoluble ash

Not more than 7 % w/w

Water soluble extractive

Not less than 20 % w/w

Alcohol soluble extractive

Not less than 15 % w/w

Thin Layer Chromatography

Solvent system

Toluene : Ethyl acetate
(7 : 3)

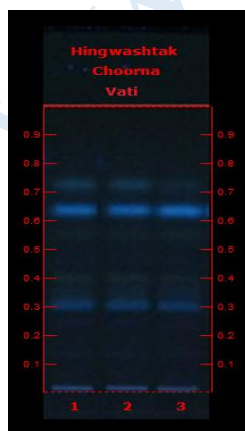
Details

Solvent of Extraction – Methanol

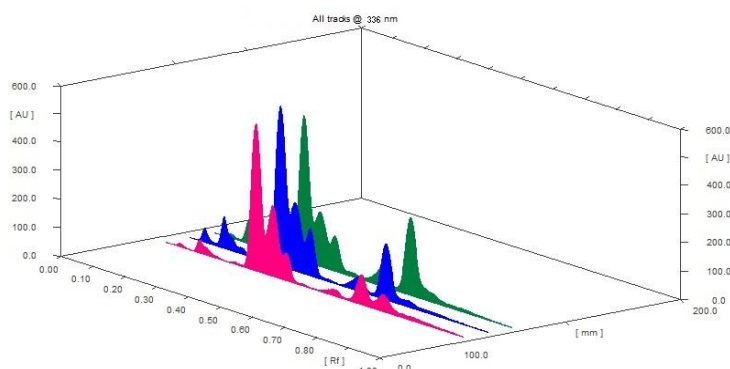
Solvent front – 90 mm

Total No. of Major spots – 7

Detection – Under UV at 366 nm



Major Spots	Colour	Approx. Rf.
1	Light Blue	0.14
2	Light Blue	0.25
3	Light Blue	0.31
4	Gray	0.42
5	Gray	0.55
6	Fluorescent Blue	0.64
7	Light Blue	0.74

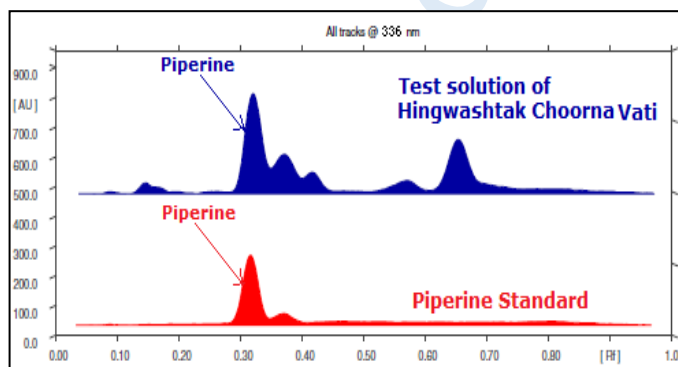
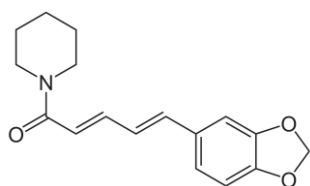


3D Peak Display of Hingwashtak Choorna Vati at 336 nm

HPTLC Profile[†]

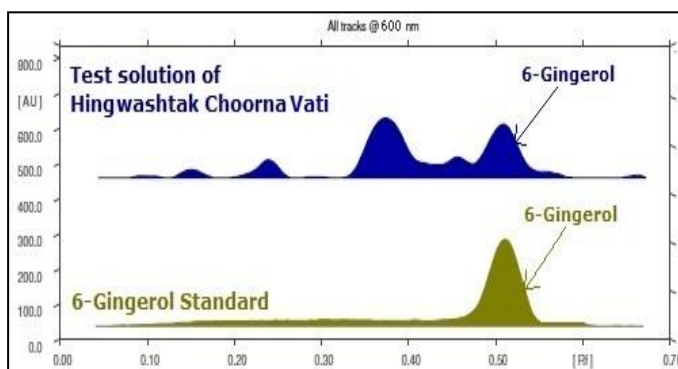
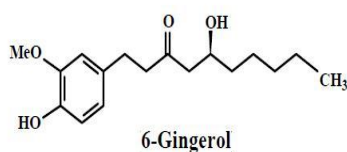
i) Piperine

When examined in the range of 200 nm to 400 nm, the test solution shows absorption maxima at about 336 nm corresponding with Piperine standard.



ii) Gingerol

When examined in the range of 400 nm to 700 nm, the test solution shows absorption maxima at about 600 nm corresponding with 6-Gingerol standard.



Heavy metal

Lead (Pb)	Not more than 10 ppm
Mercury (Hg)	Not more than 1 ppm
Arsenic (As)	Not more than 3 ppm
Cadmium (Cd)	Not more than 0.3 ppm

<i>E. coli</i>	Absent/g
<i>P. aeruginosa</i>	Absent/g
<i>Salmonella sp.</i>	Absent/g
<i>Staphylococcus sp.</i>	Absent/g
Total Microbial plate count (TPC)	Not more than 10 ⁵ c.f.u./g
Total Yeast & Mould Count (TYMC)	Not more than 10 ³ c.f.u./g
Pesticide Residue [†] (OC+OP)	Complies as per API
Aflatoxins B1,B2,G1,G2 [†]	Complies as per API