

## HARIDRAKHANDA CHOORNA

Monograph No. – 030138 ver 3.0

Issue No: 03

Date of Issue: 20/03/2018

Text Reference : Bhaishajya Ratnavali (Udardasheetapittakotha chikitsa) 55/18-22

Amendment No : 00

Amendment Date : --

Shelf Life: 2 years

### Description

Light yellowish green colour granules, with characteristic odour & taste.

### Loss on Drying at 105°

Not more than 7 % w/w

### Ash

Not more than 6 % w/w

### Acid Insoluble Ash

Not more than 2 % w/w

### Water Soluble Extractive

Not less than 50 % w/w

### Alcohol Soluble Extractive

Not less than 15 % w/w

### pH (10% Aq. Solution)

4.0 – 6.0

### Iron (Fe)

Not less than 0.12 % w/w

### Thin Layer Chromatography Solvent system

Chloroform : Ethanol : Glacial acetic acid  
( 9.4 : 0.5 : 0.1 )

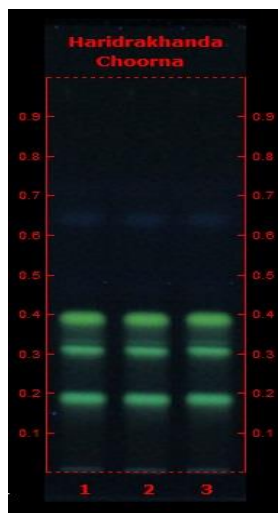
### Details

Solvent of Extraction – Methanol

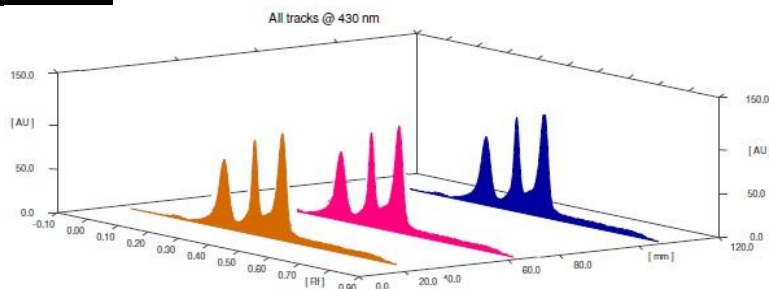
Solvent front – 90 mm

Total No. of Major spots – 4

Detection – Under UV at 366 nm



Major Spots	Colour	Approx. Rf.
1	Yellow	0.33
2	Yellow	0.42
3	Yellow	0.50
4	Blue	0.70



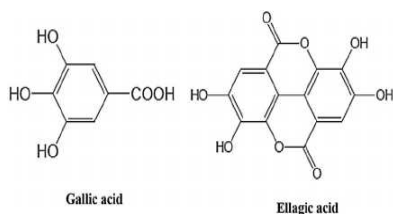
### 3D Peak Display of Haridra Khanda Churna at 430 nm

Confidential – photocopy prohibited

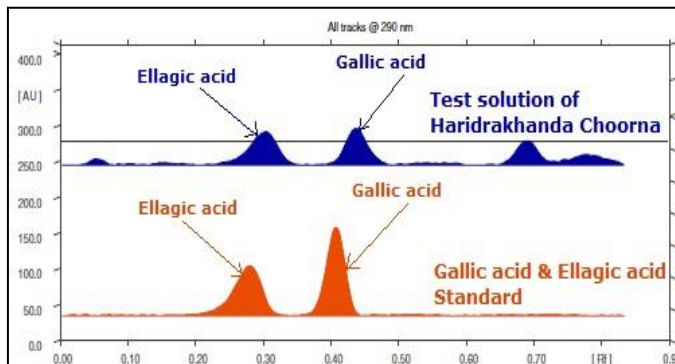
Note : † : These extra tests can be performed on every batch at extra cost. Tests can be ascertained on request.

## HPTLC Profile<sup>†</sup>

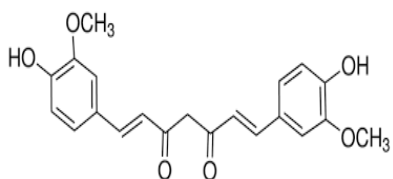
### i) Total Polyphenols (as Gallic acid & Ellagic acid)



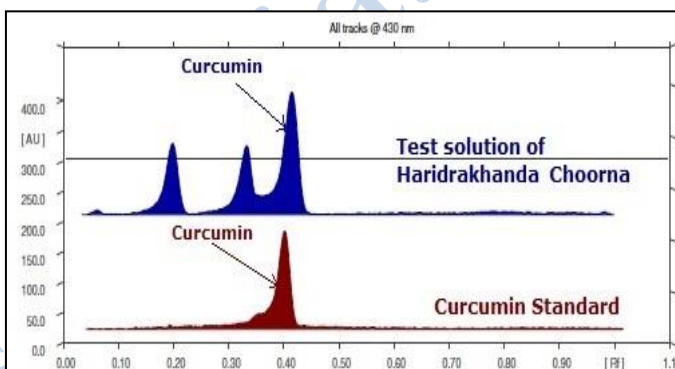
When examined in the range of 200 nm to 400 nm, the test solution shows absorption maxima at about 290 nm for Gallic acid & 278 nm for Ellagic acid corresponding with Gallic acid & Ellagic acid standard.



### ii) Curcumin



When examined in the range of 200 nm to 700 nm, the test solution shows absorption maxima at about 430 nm corresponding with Curcumin standard.



## Heavy metal

<b>Lead (Pb)</b>	NMT 10 ppm
<b>Mercury (Hg)</b>	NMT 1 ppm
<b>Arsenic (As)</b>	NMT 3 ppm
<b>Cadmium (Cd)</b>	NMT 0.3 ppm
<b>E. coli</b>	Absent/g
<b>P. aeruginosa</b>	Absent/g
<b>Salmonella sp.</b>	Absent/g
<b>Staphylococcus sp.</b>	Absent/g
<b>Total Microbial plate count (TPC)</b>	NMT 10 <sup>5</sup> c.f.u./g
<b>Total Yeast &amp; Mould count (TYMC)</b>	NMT 10 <sup>3</sup> c.f.u./g
<b>Pesticide Residue<sup>†</sup> (OC+OP)</b>	Complies as per API
<b>Aflatoxins B1,B2,G1,G2<sup>†</sup></b>	Complies as per API

## Confidential – photocopy prohibited

Note : <sup>†</sup> : These extra tests can be performed on every batch at extra cost. Tests can be ascertained on request.