

DRAKSHASAVA

Monograph No. – 100006 ver 3.0

Issue No: 03

Date of Issue: 16/03/2017

Text Reference : Bharat Bhaishajya Ratnakar 3/3130

Amendment No : 01

Amendment Date : 01/06/2021

Shelf Life: 10 years

Description

Brown coloured liquid, characteristic fermented odour, taste sweet, astringent & bitter.

pH

3.5 – 5.0

Specific Gravity

1.05 - 1.15

Brix

20 – 30 %

Alcohol content

7 – 11 % v/v

Thin Layer Chromatography Solvent system

Toluene : Ethyl acetate : Formic acid
(5 : 5 : 1)

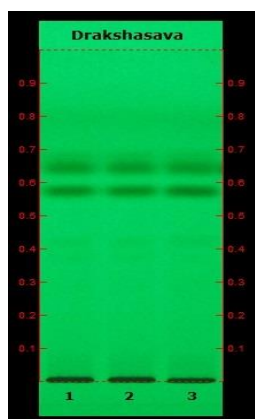
Details

Solvent of Extraction – Methanol

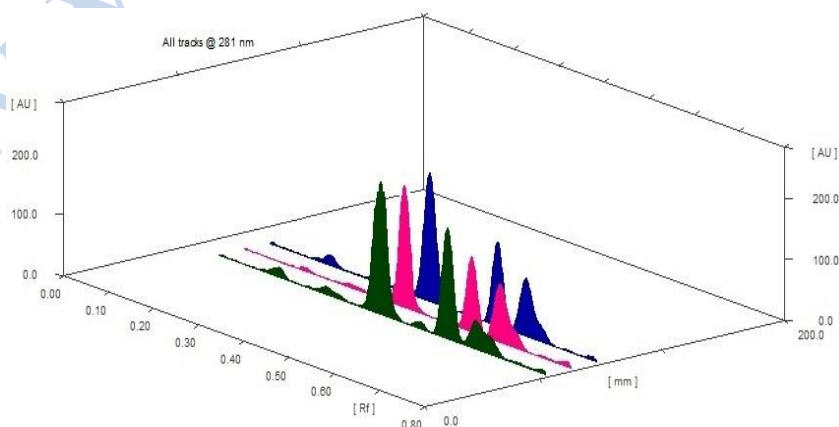
Distance travelled by solvent front – 90mm

Total No. of Major spots – 5

Detection – Under UV at 254 nm



Major Spots	Colour	Approx. Rf.
1	Light Gray	0.37
2	Light Gray	0.42
3	Black	0.57
4	Black	0.65
5	Gray	0.68



3D Peak Display of Drakshasava at 281 nm

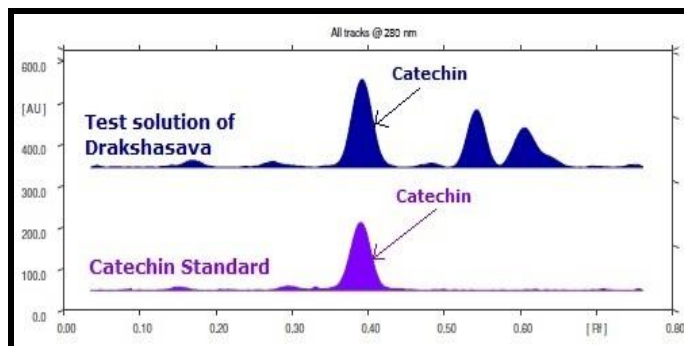
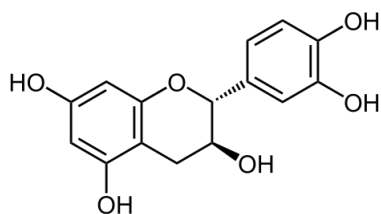
Confidential - photocopy prohibited

Note : † : These extra tests can be performed on every batch at extra cost. Tests can be ascertained on request.

HPTLC Profile[†]

i) Catechin

When examined in the range of 200 nm to 400 nm, the test solution shows absorption maxima at about 280 nm corresponding with Catechin standard.



Heavy metal

Lead (Pb)	NMT 10 ppm
Mercury (Hg)	NMT 1 ppm
Arsenic (As)	NMT 3 ppm
Cadmium (Cd)	NMT 0.3 ppm
E. coli [†]	Absent/g
P. aeruginosa [†]	Absent/g
Salmonella sp. [†]	Absent/g
Staphylococcus sp. [†]	Absent/g
Total Microbial plate Count (TPC)[†]	NMT 10 ⁵ c.f.u./g
Total Yeast & Mould Count[†]	NMT 10 ³ c.f.u./g
Pesticide Residue [†] (OC+OP)	Complies as per API
Aflatoxins B1,B2,G1,G2 [†]	Complies as per API