

## CHYAVANPRASH ASHTAVARG

Monograph No. – 010001 ver 3.0

Issue No: 03

Amendment No : 01

Date of Issue: 14/04/2018

Amendment Date : 18/02/2023

Text Reference : Sharangdhar Samhita Madhyam Khanda 8/10-21

Shelf Life: 3 years

### Description

Light brown to blackish brown colour, semi-solid mass, with sweet and slightly sour taste



### Loss on Drying at 105°

Not more than 14 % w/w

### pH (1% aqueous solution)

3 – 4

### Ash

Not more than 1 % w/w

### Acid Insoluble Ash

Not more than 0.5 % w/w

### Alcohol Soluble Extractive <sup>+</sup>

Not less than 50.0 % w/w

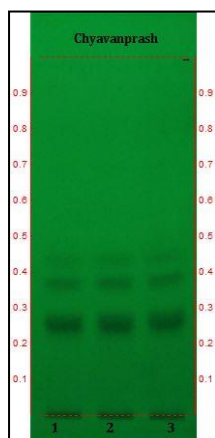
### Water Soluble Extractive <sup>+</sup>

Not less than 50.0 % w/w

### Thin Layer Chromatography Solvent system

Chloroform : Ethyl acetate : Formic acid  
( 5 : 4 : 1.6 )

### Details



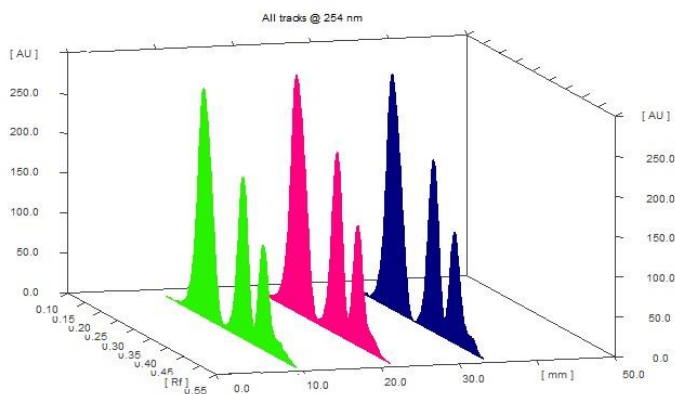
Solvent of Extraction – Methanol

Solvent front – 90 mm

Total No. of Major spots – 3

Detection – Under UV at 254 nm

Major Spots	Colour	Approx. Rf.
1	Gray	0.25
2	Gray	0.37
3	Light Gray	0.43



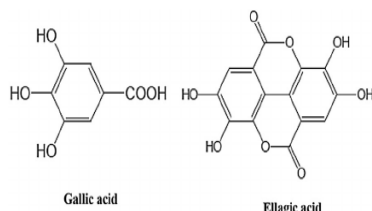
3D Peak Display of Chyavanprash Ashtavarg at 254 nm

**Confidential - photocopy prohibited**

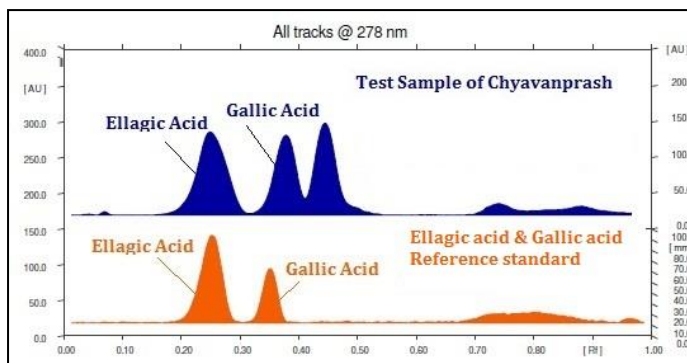
Note : <sup>†</sup> : These extra tests can be performed on every batch at extra cost. Tests can be ascertained on request.

## HPTLC Profile +

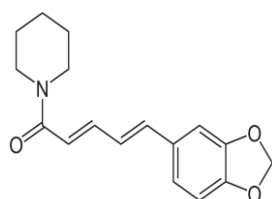
### i) Total Polyphenols (as Gallic acid & Ellagic acid)



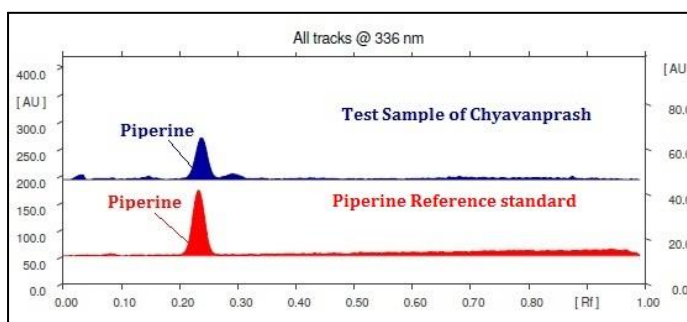
When examined in the range of 200 nm to 400 nm, the test solution shows absorption maxima at about 290 nm for Gallic acid & 278 nm for Ellagic acid corresponding with Gallic acid & Ellagic acid standard.



### ii) Piperine



When examined in the range of 200 nm to 400 nm, the test solution shows absorption standard maxima at about 336 nm corresponding with piperine standard.



## Heavy metal

<b>Lead (Pb)</b>	NMT 10 ppm
<b>Mercury (Hg)</b>	NMT 1 ppm
<b>Arsenic (As)</b>	NMT 3 ppm
<b>Cadmium (Cd)</b>	NMT 0.3 ppm

**E. coli** Absent/g

**P. aeruginosa** Absent/g

**Salmonella sp.** Absent/g

**Staphylococcus sp.** Absent/g

**Total Microbial plate count (TPC)** NMT 10<sup>5</sup> c.f.u./g

**Total Yeast & Mould Count (TYMC)** NMT 10<sup>3</sup> c.f.u./g

**Pesticide Residue + (OC+OP)** Complies as per API

**Aflatoxins B1,B2,G1,G2 +** Complies as per API