

BRAHMI VATI BUDDHIVARDHAK

Monograph No. – 0500564 ver 3.0

Issue No: 03

Date of Issue: 27/07/2017

Text Reference : Ayurved Sara Sangraha

Amendment No : 01

Amendment Date : 28/01/2025

Shelf Life: 5 years

Description

Reddish brown to brown coloured, round biconvex coated tablets with SDL mark on one side.

Loss on Drying at 105°

Not more than 10 % w/w

Friability

Not more than 1 % w/w

Disintegration Time

Not more than 60 min.

Hardness

Not less than 2 kg/cm²

Thickness

5.0 ± 0.5 mm

Diameter

8.0 ± 0.5 mm

Average Weight

329 mg ± 5 %

Uniformity of weight

Not more than 2 tablets deviate by more than 5% of the average weight and none by more than 10% of the average weight.

Ash

Not more than 35 % w/w

Acid insoluble ash

Not more than 30 % w/w

Water soluble extractive

Not less than 15 % w/w

Alcohol soluble extractive

Not less than 3 % w/w

Elemental assay

Iron (Fe)

8 - 14 mg/tablet

Copper (Cu)

Not less than 2.5 mg/tablet

Mercury (Hg)

18 - 24 mg/tablet

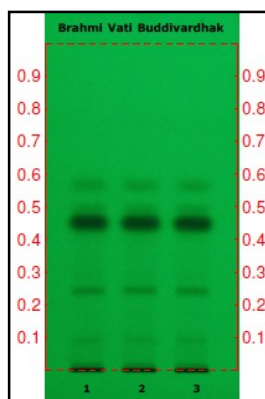
Sulphur (S)

Not less than 8 mg/tablet

Thin Layer Chromatography Solvent system

Toluene : Ethyl acetate
(7 : 3)

Details



Solvent of Extraction – Methanol

Distance traveled by solvent front –90 mm

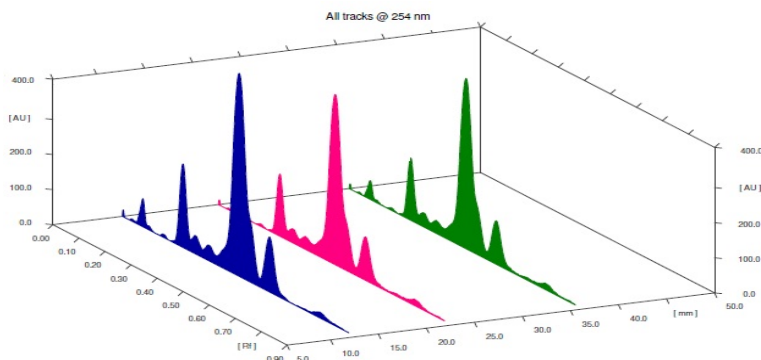
Total No. of Major spots – 5

Visualization – Under UV at 254 nm

Major Spots	Colour	Approx. Rf.
1	Light Gray	0.10
2	Gray	0.24
3	Black	0.45
4	Gray	0.50
5	Gray	0.57

Confidential - photocopy prohibited

Note : † : These extra tests can be performed on every batch at extra cost. Tests can be ascertained on request.

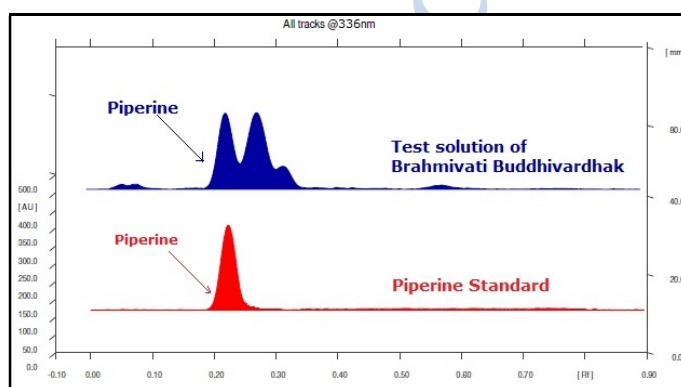
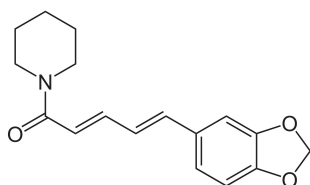


3D Peak Display of Brahmi Vati Buddhivardhak at 254 nm

HPTLC Profile[†]

i) Piperine

When examined in the range of 200 nm to 400 nm, the test solution shows absorption maxima at about 336 nm corresponding with Piperine standard.



E. coli

Absent/g

P. aeruginosa

Absent/g

Salmonella sp.

Absent/g

Staphylococcus sp.

Absent/g

Total Microbial plate count (TPC)

Not more than 10^5 c.f.u./g

Total Yeast & Mould count (TYMC)

Not more than 10^3 c.f.u./g

Pesticide Residue[†] (OC+OP)

Complies as per API

Aflatoxins B₁, B₂, G₁, G₂[†]

Complies as per API