

BHASKARLAVANA CHOORNA VATI

Monograph No. – 0300234 ver 3.0

Issue No: 03

Date of Issue: 28/03/2017

Text Reference : Bhaishajya Ratnavali (Agnimandyadi) 10/79-87

Amendment No : 01

Amendment Date : 18/12/2024

Shelf Life: 3 years

Description

Greenish brown coloured round biconvex coated tablets.

Loss on Drying at 105°

Not more than 7 % w/w

Friability

Not more than 1 % w/w

Disintegration Time

Not more than 60 min.

Hardness

Not less than 2.0 kg/cm²

Thickness

5.5 ± 0.5 mm

Diameter

12.0 - 12.5 mm

Average Weight

660 mg ± 5%

Uniformity of weight

Not more than 2 tablets deviate by more than 5% of the average weight and none by more than 10% of the average weight.

Ash

Not more than 45 % w/w

Acid insoluble ash

Not more than 5 % w/w

Water soluble extractive

Not less than 35 % w/w

Alcohol soluble extractive

Not less than 25 % w/w

Thin Layer Chromatography

Solvent system

Toluene : Ethyl acetate : Formic acid
(5 : 5 : 1)

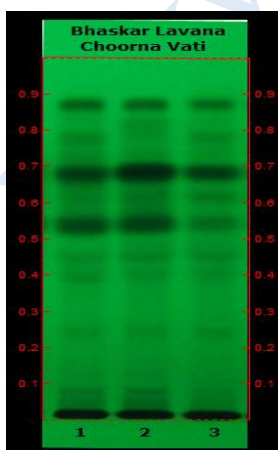
Details

Solvent of Extraction – Methanol

Solvent front – 90 mm

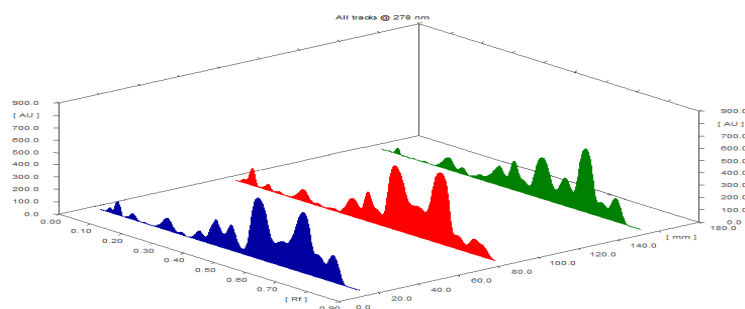
Total No. of Major spots – 10

Detection – Under UV at 254 nm



Major Spots	Colour	Approx. Rf.
1	Gray	0.06
2	Gray	0.08
3	Light Gray	0.24
4	Light Gray	0.39
5	Light Gray	0.45
6	Black	0.54
7	Gray	0.61
8	Black	0.68
9	Gray	0.78
10	Black	0.87



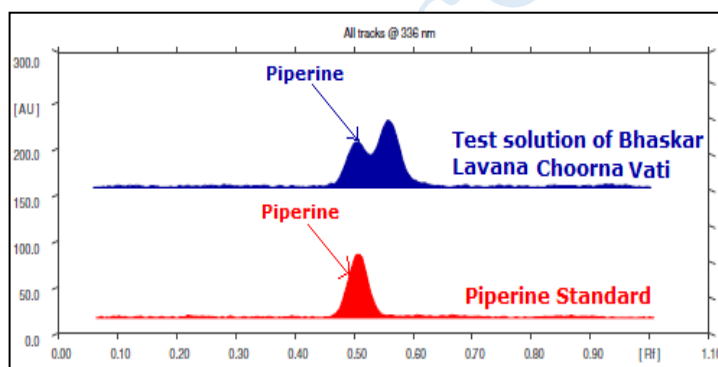
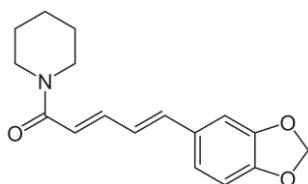


3D Peak Display of Bhaskar Lavana Choorna Vati at 278 nm

HPTLC Profile[†]

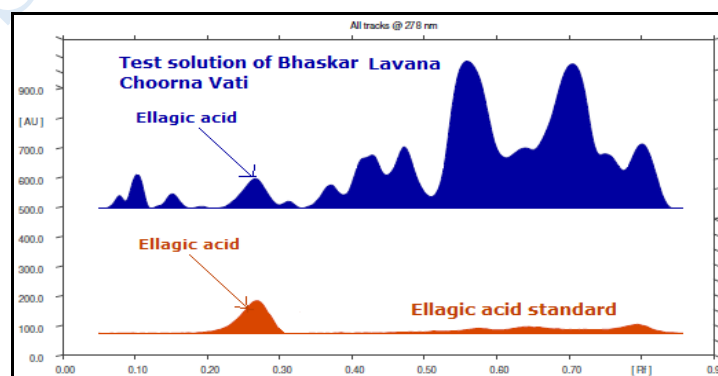
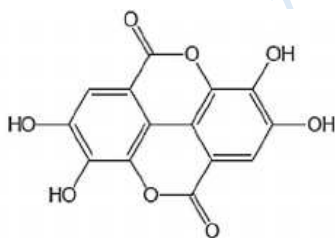
i) Piperine

When examined in the range of 200 nm to 400 nm, the test solution shows absorption maxima at about 336 nm corresponding with Piperine standard.



ii) Ellagic acid

When examined in the range of 200 nm to 400 nm, the test solution shows absorption maxima at about 278 nm corresponding with Ellagic acid standard.



Heavy metal

Lead (Pb)	Not more than 10 ppm
Mercury (Hg)	Not more than 1 ppm
Arsenic (As)	Not more than 3 ppm
Cadmium (Cd)	Not more than 0.3 ppm

<i>E. coli</i>	Absent/g
<i>P. aeruginosa</i>	Absent/g
<i>Salmonella sp.</i>	Absent/g
<i>Staphylococcus sp.</i>	Absent/g
Total Microbial plate count (TPC)	Not more than 10 ⁵ c.f.u./g
Total Yeast & Mould Count (TYMC)	Not more than 10 ³ c.f.u./g
Pesticide Residue [†] (OC+OP)	Complies as per API
Aflatoxins B1,B2,G1,G2 [†]	Complies as per API