

## TRIPHALA CHOORNA

Monograph No. – 030015 ver 3.0

Issue No: 03

Amendment No : 00

Date of Issue: 28/03/2017

Amendment Date : --

Text Reference : Bhavaprakash Nighantu (Haritakyadi Varga)

Shelf Life: 2 years

### Description

Moderately fine to fine powder, Light yellow colour, odour pleasant, taste astringent.



### Loss on Drying at 105°

Not more than 10 % w/w

### Ash

Not more than 6 % w/w

### Acid Insoluble Ash

Not more than 2 % w/w

### Water Soluble Extractive

Not less than 40 % w/w

### Alcohol Soluble Extractive

Not less than 30 % w/w

### Bulk Density

0.45 – 0.65

### Thin Layer Chromatography Solvent system

Chloroform : Ethyl acetate : Formic acid  
( 5 : 4 : 1.6 )

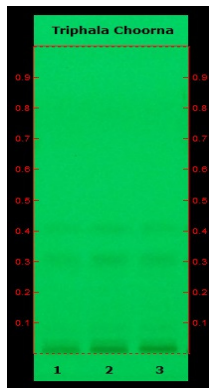
### Details

Solvent of Extraction – Methanol

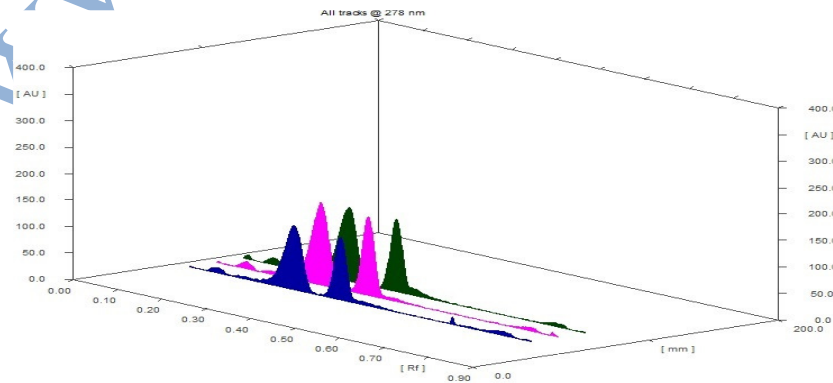
Solvent front – 90 mm

Total No. of Major spots – 2

Detection – Under UV at 254 nm



Major Spots	Colour	Approx. Rf.
1	Light Gray	0.31
2	Light Gray	0.40



3D Peak Display of Triphala Choorana at 278 nm

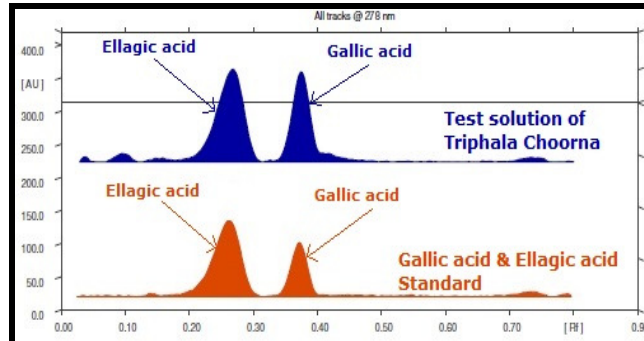
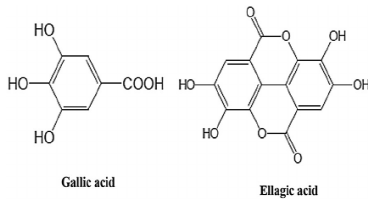
Confidential - photocopy prohibited

Note : † : These extra tests can be performed on every batch at extra cost. Tests can be ascertained on request.

## HPTLC Profile<sup>†</sup>

### i) Total Polyphenols (as Gallic acid & Ellagic acid)

When examined in the range of 200 nm to 400 nm, the test solution shows absorption maxima at about 290 nm for Gallic acid & 278 nm for Ellagic acid corresponding with Gallic acid & Ellagic acid standard.



## Heavy metal

<b>Lead (Pb)</b>	NMT 10 ppm
<b>Mercury (Hg)</b>	NMT 1 ppm
<b>Arsenic (As)</b>	NMT 3 ppm
<b>Cadmium (Cd)</b>	NMT 0.3 ppm
<b>E. coli <sup>†</sup></b>	Absent/g
<b>P. aeruginosa <sup>†</sup></b>	Absent/g
<b>Salmonella sp. <sup>†</sup></b>	Absent/g
<b>Staphylococcus sp. <sup>†</sup></b>	Absent/g
<b>Total Microbial plate count (TPC) <sup>†</sup></b>	NMT 10 <sup>5</sup> c.f.u./g
<b>Total Yeast &amp; Mould count<sup>†</sup></b>	NMT 10 <sup>3</sup> c.f.u./g
<b>Pesticide Residue <sup>†</sup> (OC+OP)</b>	Complies as per API
<b>Aflatoxins B1,B2,G1,G2 <sup>†</sup></b>	Complies as per API

## TRIPHALA CHOORNA VATI

### Monograph No. – 0300154 ver 3.0

Issue No: 03

Amendment No : 00

Date of Issue: 28/03/2017

Amendment Date : --

Text Reference : Bhavaprakash Nighantu (Haritakyadi Varga)

Shelf Life: 3 years

#### Description

Greenish brown coloured round biconvex coated tablets.

#### Loss on Drying at 105°

Not more than 7 % w/w

#### Hardness

Not less than 2.0 kg/cm<sup>2</sup>

#### Thickness

5.5 mm ± 0.5 mm

#### Diameter

12.0 - 12.5 mm

#### Disintegration Time

Not more than 60 min.

#### Average Weight

660 mg ± 5%

#### Uniformity of weight of 20 tablets

Not more than 2 tablets deviate by more than 5% of the average weight and none by more than 10% of the average weight.

#### Ash

Not more than 15 % w/w

#### Acid insoluble ash

Not more than 5 % w/w

#### Water soluble extractive

Not less than 20 % w/w

#### Alcohol soluble extractive

Not less than 15 % w/w

#### Thin Layer Chromatography Solvent system

Chloroform : Ethyl acetate : Formic acid  
( 5 : 4 : 1.6 )

#### Details

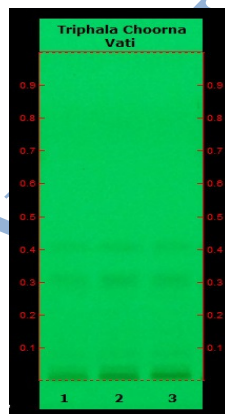
Solvent of Extraction – Methanol

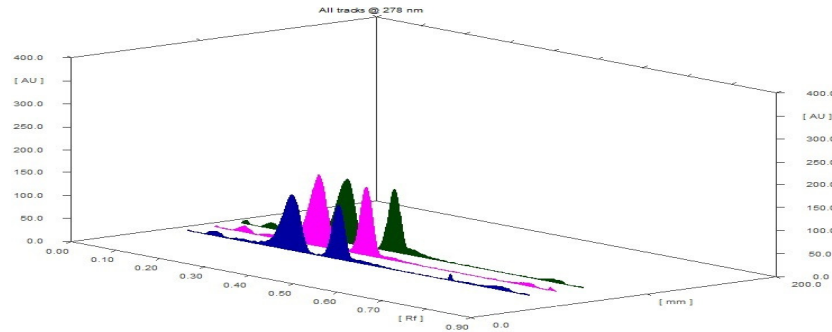
Solvent front – 90 mm

Total No. of Major spots – 2

Detection – Under UV at 254 nm

Major Spots	Colour	Approx. Rf.
1	Light Gray	0.31
2	Light Gray	0.40



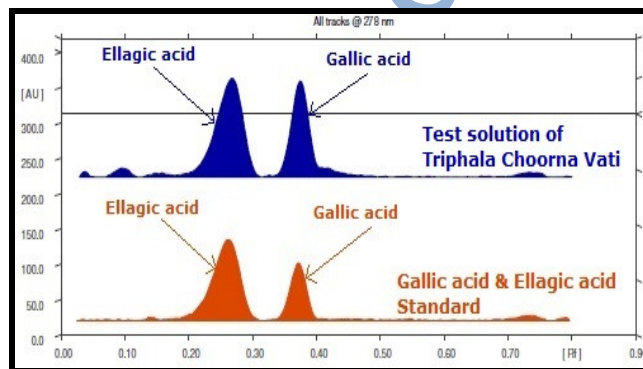
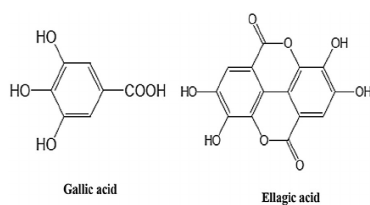


**3D Peak Display of Triphala Choorna vati at 278 nm**

## HPTLC Profile<sup>+</sup>

### i) Total Polyphenols (as Gallic acid & Ellagic acid)

When examined in the range of 200 nm to 400 nm, the test solution shows absorption maxima at about 290 nm for Gallic acid & 278 nm for Ellagic acid corresponding with Gallic acid & Ellagic acid standard.



## Heavy metal

<b>Lead (Pb)</b>	NMT 10 ppm
<b>Mercury (Hg)</b>	NMT 1 ppm
<b>Arsenic (As)</b>	NMT 3 ppm
<b>Cadmium (Cd)</b>	NMT 0.3 ppm

**E. coli** <sup>+</sup> Absent/g

**P. aeruginosa** <sup>+</sup> Absent/g

**Salmonella sp.** <sup>+</sup> Absent/g

**Staphylococcus sp.** <sup>+</sup> Absent/g

**Total Microbial plate count (TPC)** <sup>+</sup> NMT 10<sup>5</sup> c.f.u./g

**Total Yeast & Mould count** <sup>+</sup> NMT 10<sup>3</sup> c.f.u./g

**Pesticide Residue** <sup>+</sup> (OC+OP) Complies as per API

**Aflatoxins B1,B2,G1,G2** <sup>+</sup> Complies as per API