

SARIVADYASAVA

Monograph No. – 100019 ver.03

Issue No: 03

Amendment No : 01

Date of Issue: 19/04/2017

Amendment Date : 01/06/2021

Text Reference : Ayurvedic Formulary of India (AFI) Part I - 1:37

Shelf Life: 10 years

Description

Dark brown colour liquid,
Characteristic odour of
Sariva, astringent in taste.

pH

3.5 – 5.0

Specific Gravity (at 25°)

1.00 -1.15 g/ml

Brix

15 – 30 %

Alcohol content

5 – 11 % v/v

Thin Layer Chromatography Solvent system

Toluene : Ethyl acetate
(10 : 3)



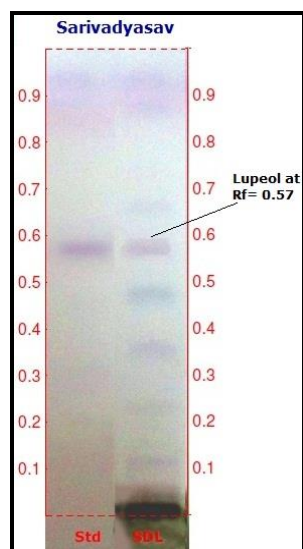
Details

Solvent of Extraction – Methanol

Solvent front – 90 mm

Total No. of Major spots – 6

Detection – After spraying with Anisaldehyde Sulfuric acid

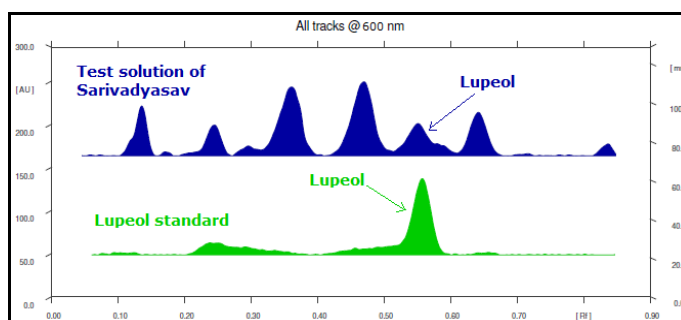
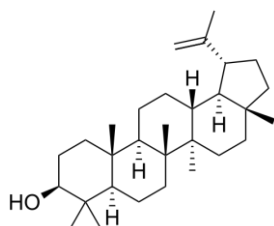


| Major Spots | Colour | Approx. Rf. |
|-------------|----------------|-------------|
| 1 | Puple | 0.12 |
| 2 | Light Puple | 0.22 |
| 3 | Puple | 0.35 |
| 4 | Blue | 0.48 |
| 5 | Puple (Lupeol) | 0.57 |
| 6 | Light Puple | 0.66 |

HPTLC Profile[†]

i) Lupeol

When examined in the range of 400 nm to 700 nm, the test solution shows absorption maxima at about 600 nm corresponding with Lupeol standard.

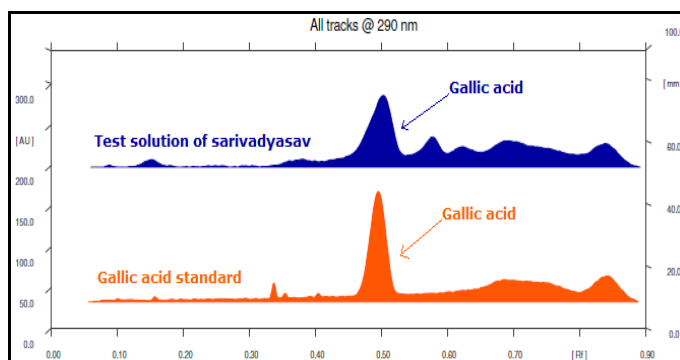
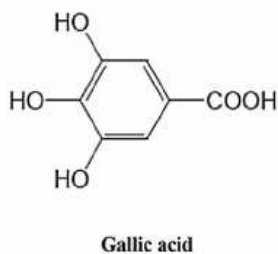


Confidential - photocopy prohibited

Note : [†] : These extra tests can be performed on every batch at extra cost. Tests can be ascertained on request.

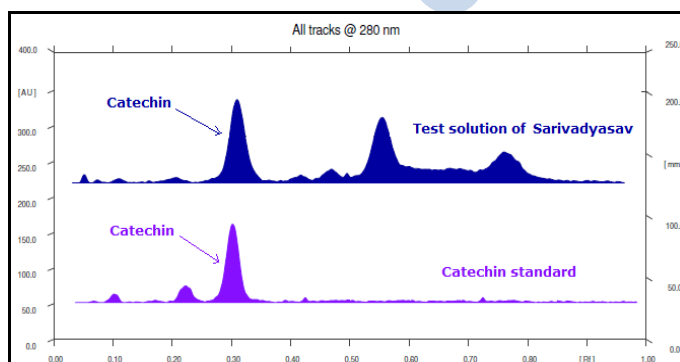
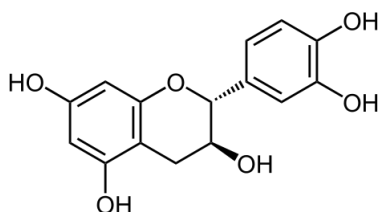
ii) Total Polyphenols (as Gallic acid)

When examined in the range of 200 nm to 400 nm, the test solution shows absorption maxima at about 290 nm for Gallic acid



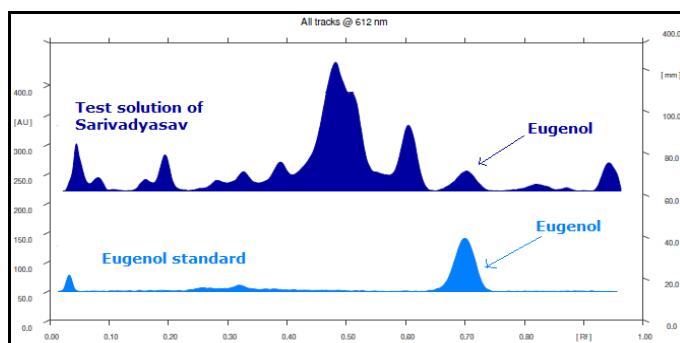
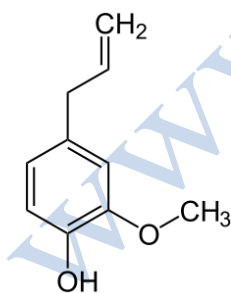
iii) Catechin

When examined in the range of 200 nm to 400 nm, the test solution shows absorption maxima at about 281 nm corresponding with Catechin standard.



iv) Eugenol

When examined in the range of 400 nm to 700 nm, the test solution shows absorption maxima at about 600 nm corresponding with Eugenol standard.



Heavy metal

| | |
|--|------------------------------|
| Lead (Pb) | NMT 10 ppm |
| Mercury (Hg) | NMT 1 ppm |
| Arsenic (As) | NMT 3 ppm |
| Cadmium (Cd) | NMT 0.3 ppm |
| E. coli [†] | Absent/g |
| P. aeruginosa [†] | Absent/g |
| Salmonella sp. [†] | Absent/g |
| Staphylococcus sp. [†] | Absent/g |
| Total Microbial Plate Count (TPC)[†] | NMT 10 ⁵ c.f.u./g |
| Total Yeast & Mould Count [†] | NMT 10 ³ c.f.u./g |
| Pesticide Residue [†] (OC+OP) | Complies as per API |
| Aflatoxins B1,B2,G1,G2 [†] | Complies as per API |