

PUSHYANUGA CHOORNA

Monograph No. – 030022 ver 3.0

Issue No: 03

Amendment No : 00

Date of Issue: 28/03/2017

Amendment Date : --

Text Reference : Bhaishajya Ratnavali (Pradararoga) 66/25-31

Shelf Life: 2 years

Description

Moderately fine to fine powder, Reddish Brown colour, odour aromatic, taste astringent.



Loss on Drying at 105°

Not more than 12 % w/w

Ash

Not more than 14 % w/w

Acid Insoluble Ash

Not more than 4 % w/w

Water Soluble Extractive

Not less than 15 % w/w

Alcohol Soluble Extractive

Not less than 10 % w/w

Bulk Density

0.40 - 0.60

Thin Layer Chromatography Solvent system

Toluene : Ethyl acetate : Acetic acid
(5 : 5 : 0.5)

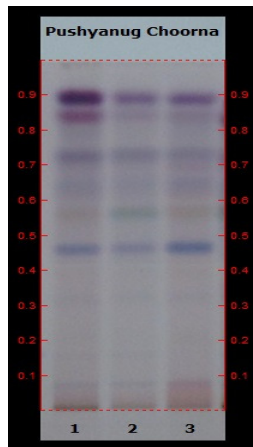
Details

Solvent of Extraction – Ethyl acetate

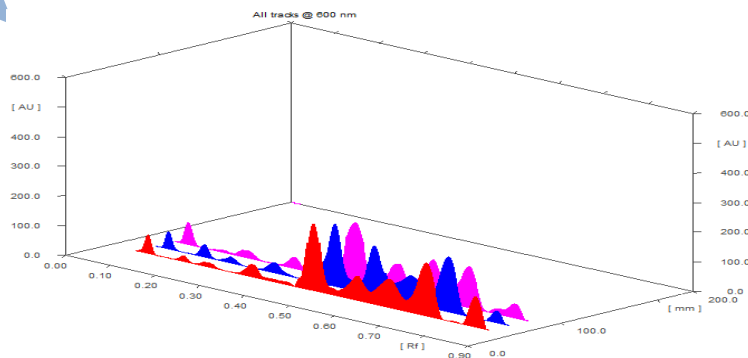
Solvent front – 90 mm

Total No. of Major spots – 10

Detection – After spraying with Anisaldehyde H₂SO₄



Major Spots	Colour	Approx. Rf.
1	Light Blue	0.07
2	Light Blue	0.17
3	Light Blue	0.32
4	Blue	0.46
5	Green	0.56
6	Light Blue	0.64
7	Light Purple	0.70
8	Light Blue	0.72
9	Purple	0.85
10	Purple	0.90



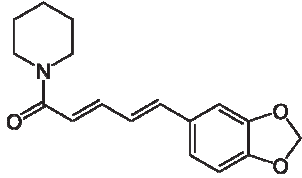
3D Peak Display of Pushyanuga Choorana at 600 nm

Confidential - photocopy prohibited

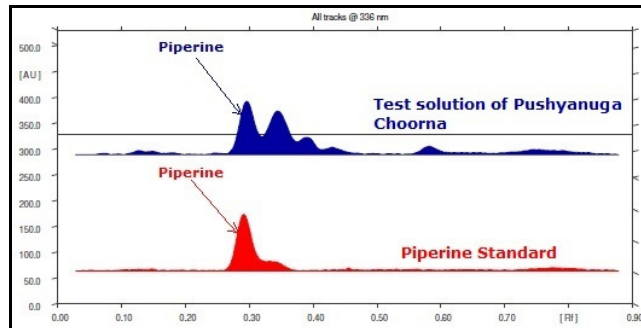
Note : † : These extra tests can be performed on every batch at extra cost. Tests can be ascertained on request.

HPTLC Profile[†]

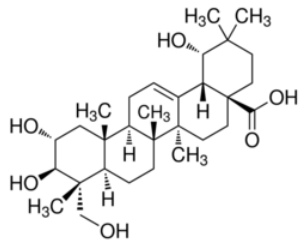
i) Piperine



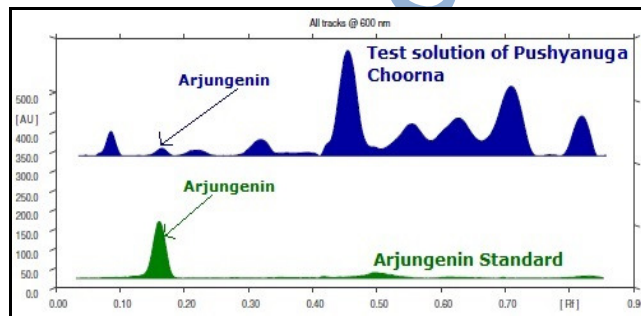
When examined in the range of 200 nm to 400 nm, the test solution shows absorption maxima at about 336 nm corresponding with Piperine standard.



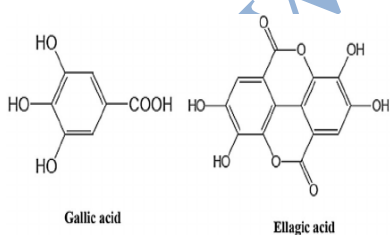
ii) Arjungenin



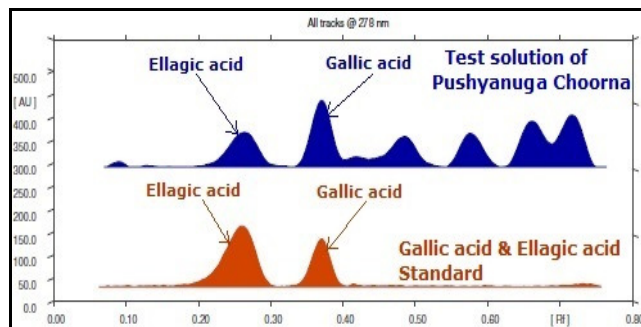
When examined in the range of 400 nm to 700 nm, the test solution shows absorption maxima at about 600 nm corresponding with Arjungenin standard.



iii) Total Polyphenols (as Gallic acid & Ellagic acid)



When examined in the range of 200 nm to 400 nm, the test solution shows absorption maxima at about 290 nm for Gallic acid & 278 nm for Ellagic acid corresponding with Gallic acid & Ellagic acid standard.



Heavy metal

Lead (Pb)	NMT 10 ppm
Mercury (Hg)	NMT 1 ppm
Arsenic (As)	NMT 3 ppm
Cadmium (Cd)	NMT 0.3 ppm
E. coli ⁺	Absent/g
P. aeruginosa ⁺	Absent/g

Confidential - photocopy prohibited

Note : [†] : These extra tests can be performed on every batch at extra cost. Tests can be ascertained on request.

Salmonella sp. †	Absent/g
Staphylococcus sp. †	Absent/g
Total Microbial plate count (TPC) †	NMT 10 ⁵ c.f.u./g
Total Yeast & Mould count[†]	NMT 10 ³ c.f.u./g
Pesticide Residue † (OC+OP)	Complies as per API
Aflatoxins B1,B2,G1,G2 †	Complies as per API

www.sdlindia.com

PUSHYANUGA CHOORNA VATI

Monograph No. – 0300224 ver 3.0

Issue No: 03

Amendment No : 00

IDate of Issue: 28/03/2017

Amendment Date : --

Text Reference : Bhaishajya Ratnavali (Pradararoga) 66/25-31

Shelf Life: 3 years

Description

Reddish brown coloured
round biconvex coated
tablets.



Loss on Drying at 105°

Not more than 7 % w/w

Hardness

Not less than 2.0 kg/cm²

Thickness

5.5 mm ± 0.5 mm

Diameter

12.0 - 12.5 mm

Disintegration Time

Not more than 60 min.

Average Weight

660 mg ± 5%

Uniformity of weight of 20 tablets

Not more than 2 tablets deviate by more than 5% of the average weight and none by more than 10% of the average weight.

Ash

Not more than 20 % w/w

Acid insoluble ash

Not more than 10 % w/w

Water soluble extractive

Not less than 10 % w/w

Alcohol soluble extractive

Not less than 3 % w/w

Thin Layer Chromatography Solvent system

Toluene : Ethyl acetate : Acetic acid
(5 : 5 : 0.5)

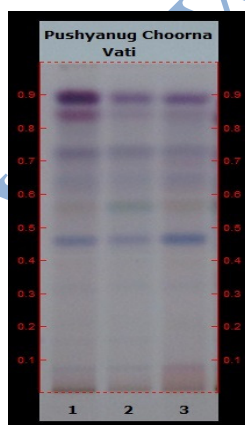
Details

Solvent of Extraction – Ethyl acetate

Solvent front – 90 mm

Total No. of Major spots – 10

Detection – After spraying with Anisaldehyde H₂SO₄



Major Spots	Colour	Approx. Rf.
1	Light Blue	0.07
2	Light Blue	0.17
3	Light Blue	0.32
4	Blue	0.46
5	Green	0.56
6	Light Blue	0.64
7	Light Purple	0.70
8	Light Blue	0.72
9	Purple	0.85
10	Purple	0.90

Heavy metal

Lead (Pb)	NMT 10 ppm
Mercury (Hg)	NMT 1 ppm
Arsenic (As)	NMT 3 ppm
Cadmium (Cd)	NMT 0.3 ppm
E. coli ⁺	Absent/g
P. aeruginosa ⁺	Absent/g
Salmonella sp. ⁺	Absent/g
Staphylococcus sp. ⁺	Absent/g
Total Microbial plate count (TPC) ⁺	NMT 10 ⁵ c.f.u./g
Total Yeast & Mould count⁺	NMT 10 ³ c.f.u./g
Pesticide Residue ⁺ (OC+OP)	Complies as per API
Aflatoxins B1,B2,G1,G2 ⁺	Complies as per API