

## HINGWASHTAK CHOORNA

Monograph No. – 030009 ver 3.0

Issue No: 03

Amendment No : 00

Date of Issue: 28/03/2017

Amendment Date : --

Text Reference : Bhaishajya Ratnavali (Agnimandyadi) 10/59

Shelf Life: 2 years

### Description

Moderately fine to fine powder, Yellowish Brown colour, odour aromatic, taste spicy & acrid.



### Loss on Drying at 105°

Not more than 10 % w/w

### Ash

Not more than 20 % w/w

### Acid Insoluble Ash

Not more than 4 % w/w

### Water Soluble Extractive

Not less than 20 % w/w

### Alcohol Soluble Extractive

Not less than 10 % w/w

### Bulk Density

0.45 - 0.65

### Thin Layer Chromatography Solvent system

Toluene : Ethyl acetate  
( 7 : 3 )

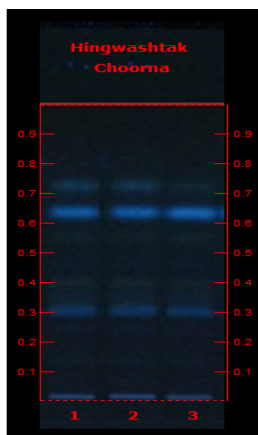
### Details

Solvent of Extraction – Methanol

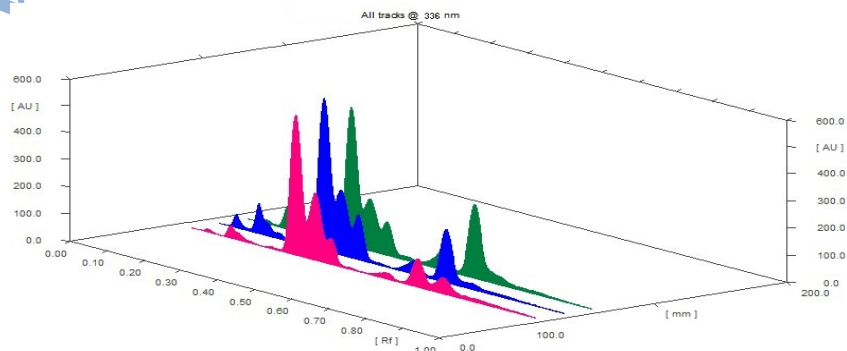
Solvent front – 90 mm

Total No. of Major spots – 7

Detection – Under UV at 366 nm



Major Spots	Colour	Approx. Rf.
1	Light Blue	0.14
2	Light Blue	0.25
3	Light Blue	0.31
4	Gray	0.42
5	Gray	0.55
6	Fluorescent Blue	0.64
7	Light Blue	0.74



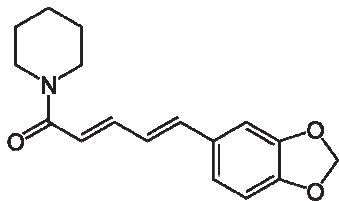
3D Peak Display of Hingwashtak Choorana at 336 nm

**Confidential - photocopy prohibited**

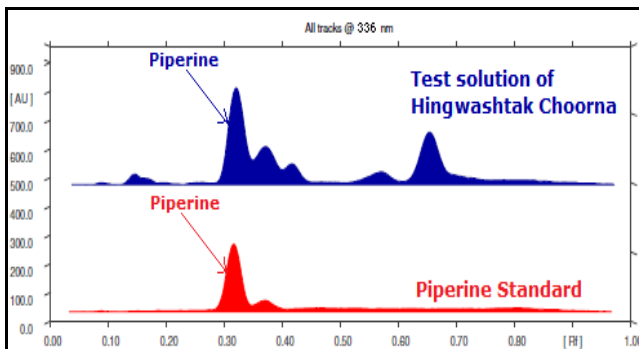
Note : † : These extra tests can be performed on every batch at extra cost. Tests can be ascertained on request.

## HPTLC Profile<sup>†</sup>

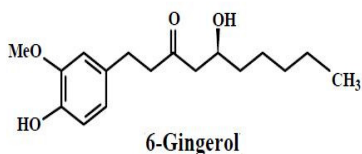
### i) Piperine



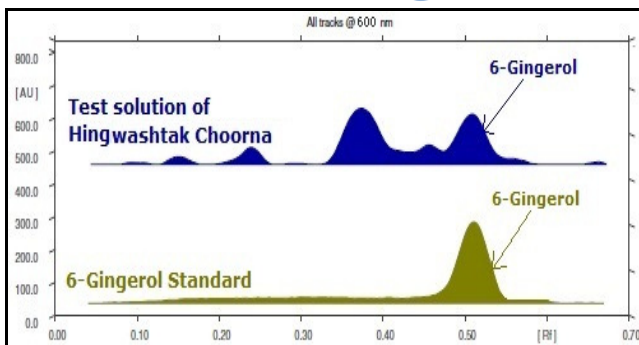
When examined in the range of 200 nm to 400 nm, the test solution shows absorption maxima at about 336 nm corresponding with Piperine standard.



### ii) Gingerol



When examined in the range of 400 nm to 700 nm, the test solution shows absorption maxima at about 600 nm corresponding with 6-Gingerol standard.



## Heavy metal

<b>Lead (Pb)</b>	NMT 10 ppm
<b>Mercury (Hg)</b>	NMT 1 ppm
<b>Arsenic (As)</b>	NMT 3 ppm
<b>Cadmium (Cd)</b>	NMT 0.3 ppm
<b>E. coli <sup>†</sup></b>	Absent/g
<b>P. aeruginosa <sup>†</sup></b>	Absent/g
<b>Salmonella sp. <sup>†</sup></b>	Absent/g
<b>Staphylococcus sp. <sup>†</sup></b>	Absent/g
<b>Total Microbial plate count (TPC) <sup>†</sup></b>	NMT 10 <sup>5</sup> c.f.u./g
<b>Total Yeast &amp; Mould count<sup>†</sup></b>	NMT 10 <sup>3</sup> c.f.u./g
<b>Pesticide Residue <sup>†</sup> (OC+OP)</b>	Complies as per API
<b>Aflatoxins B1,B2,G1,G2 <sup>†</sup></b>	Complies as per API

## HINGWASHTAK CHOORNA VATI

Monograph No. – 0300094 ver 3.0

Issue No: 03

Amendment No : 00

IDate of Issue: 28/03/2017

Amendment Date : --

Text Reference : Bhaishajya Ratnavali (Agnimandyadi) 10/59

Shelf Life: 3 years

### Description

Yellowish brown coloured round biconvex coated tablets.

### Loss on Drying at 105°

Not more than 7 % w/w

### Hardness

Not less than 2.0 kg/cm<sup>2</sup>

### Thickness

5.5 mm ± 0.5 mm

### Diameter

12.0 - 12.5 mm

### Disintegration Time

Not more than 60 min.

### Average Weight

660 mg ± 5%

### Uniformity of weight of 20 tablets

Not more than 2 tablets deviate by more than 5% of the average weight and none by more than 10% of the average weight.

### Ash

Not more than 35 % w/w

### Acid insoluble ash

Not more than 7 % w/w

### Water soluble extractive

Not less than 20 % w/w

### Alcohol soluble extractive

Not less than 15 % w/w

### Thin Layer Chromatography Solvent system

Toluene : Ethyl acetate  
( 7 : 3 )

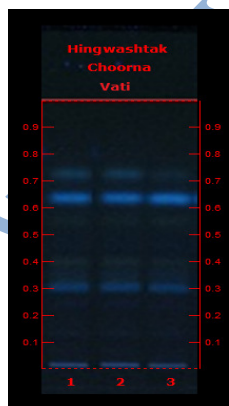
### Details

Solvent of Extraction – Methanol

Solvent front – 90 mm

Total No. of Major spots – 7

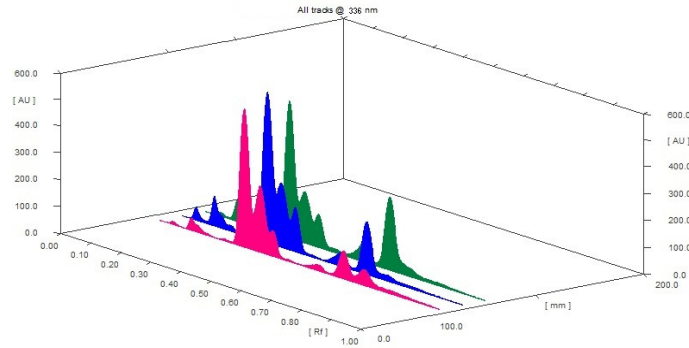
Detection – Under UV at 366 nm



Major Spots	Colour	Approx. Rf.
1	Light Blue	0.14
2	Light Blue	0.25
3	Light Blue	0.31
4	Gray	0.42
5	Gray	0.55
6	Fluorescent Blue	0.64
7	Light Blue	0.74

Confidential - photocopy prohibited

Note : † : These extra tests can be performed on every batch at extra cost. Tests can be ascertained on request.

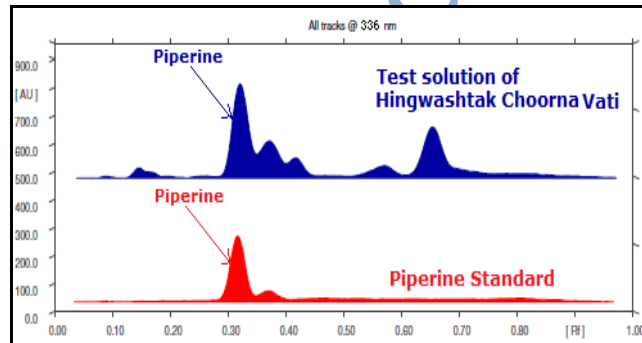
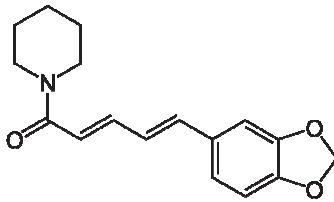


**3D Peak Display of Hingwashtak Choorna Vati at 336 nm**

### HPTLC Profile<sup>†</sup>

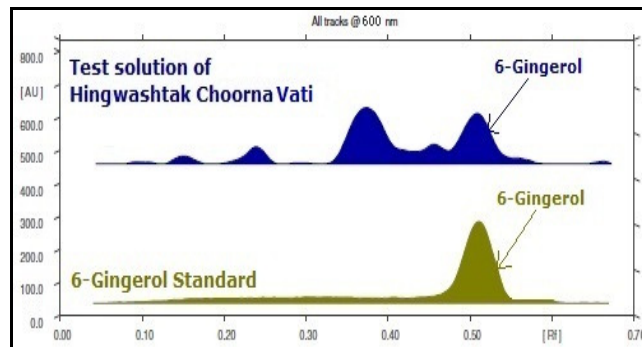
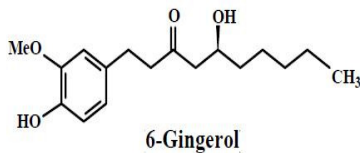
#### i) Piperine

When examined in the range of 200 nm to 400 nm, the test solution shows absorption maxima at about 336 nm corresponding with Piperine standard.



#### ii) Gingerol

When examined in the range of 400 nm to 700 nm, the test solution shows absorption maxima at about 600 nm corresponding with 6-Gingerol standard.



### Heavy metal

**Lead (Pb)** NMT 10 ppm

**Mercury (Hg)** NMT 1 ppm

**Arsenic (As)** NMT 3 ppm

**Cadmium (Cd)** NMT 0.3 ppm

**E. coli** <sup>†</sup> Absent/g

**Confidential - photocopy prohibited**

Note : <sup>†</sup> : These extra tests can be performed on every batch at extra cost. Tests can be ascertained on request.

<b>P. aeruginosa</b> <sup>†</sup>	Absent/g
<b>Salmonella sp.</b> <sup>†</sup>	Absent/g
<b>Staphylococcus sp.</b> <sup>†</sup>	Absent/g
<b>Total Microbial plate count (TPC)</b> <sup>†</sup>	NMT 10 <sup>5</sup> c.f.u./g
<b>Total Yeast &amp; Mould count</b> <sup>†</sup>	NMT 10 <sup>3</sup> c.f.u./g
<b>Pesticide Residue</b> <sup>†</sup> (OC+OP)	Complies as per API
<b>Aflatoxins B1,B2,G1,G2</b> <sup>†</sup>	Complies as per API

[www.sdlindia.com](http://www.sdlindia.com)