

KRUMIKUTHAR RASA

Monograph No. – 0800294 ver 3.0

Issue No: 03

Date of Issue: 28/10/2016

Text Reference : Nighantu Ratnakar (Krumi)

Amendment No : 00

Amendment Date : --

Shelf Life: 5 years

Description

Brown to dark brown colour, round biconvex tablet having SDL mark on one side.

Loss on Drying at 105°

Not more than 15 % w/w

Friability

Not more than 1 % w/w

Disintegration Time

Not more than 30 min.

Hardness

Not less than 2 kg/cm²

Average Weight

245 - 282 mg

Uniformity of weight of 20 tablets

Not more than 2 tablets deviate by more than 5% of the Average Weight and none by more than 10% of the Average Weight.

Ash

Not more than 25 % w/w

Acid insoluble ash

Not more than 5 % w/w

Water soluble extractive

Not less than 20 % w/w

Alcohol soluble extractive

Not less than 20 % w/w

Elemental Assay

Mercury (Hg)

4 - 7 mg/tab

Thin Layer Chromatography Solvent system

Chloroform : Hexane : Acetonitrile
(5 : 4.6 : 0.4)

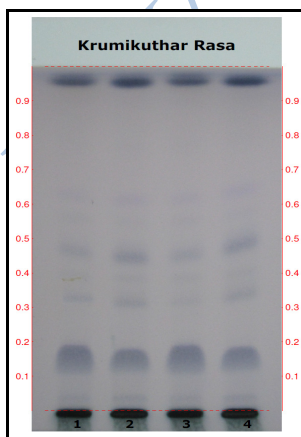
Details

Solvent of Extraction – Methanol

Solvent front – 90 mm

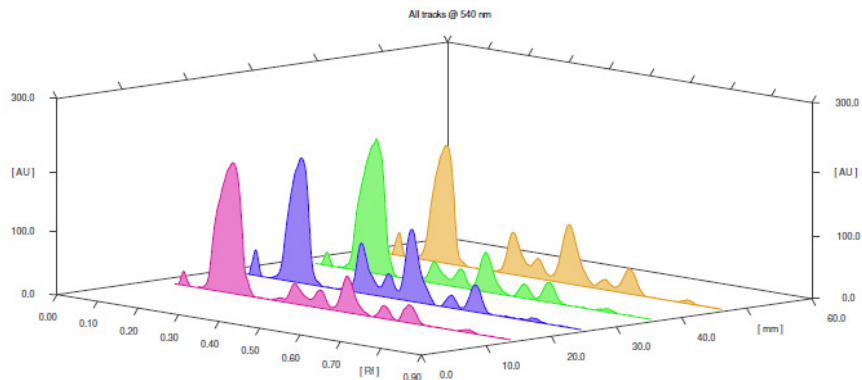
Total No. of Major spots – 8

Detection – After spraying Anisaldehyde H₂SO₄



Major Spots	Colour	Approx. Rf.
1	Gray	0.04
2	Violet	0.15
3	Gray	0.33
4	Light Gray	0.39
5	Gray	0.44
6	Light Gray	0.54
7	Light Purple	0.62
8	Black	0.94

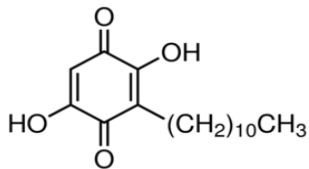




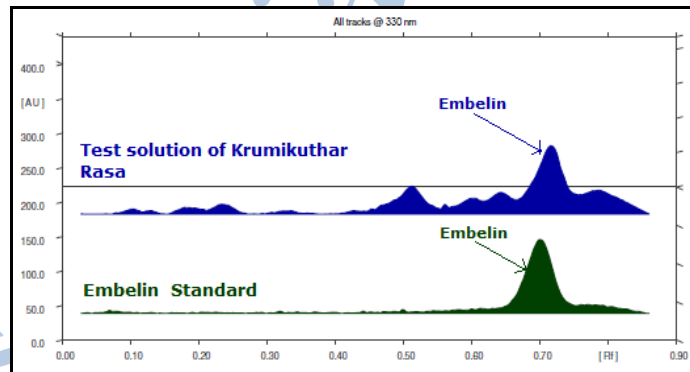
3D Peak Display of Krumikuthar Rasa at 540 nm

HPTLC Profile

i) Embelin



When examined in the range of 200 nm to 400 nm, the test solution shows absorption maxima at about 330 nm corresponding with Embelin standard.



E. coli †	Absent/g
P. aeruginosa †	Absent/g
Salmonella sp. †	Absent/g
Staphylococcus sp. †	Absent/g
Total Microbial plate count (TPC) †	NMT 10 ⁵ c.f.u./g
Total Yeast & Mould count †	NMT 10 ³ c.f.u./g
Pesticide Residue † (OC+OP)	Complies as per API
Aflatoxins B1,B2,G1,G2 †	Complies as per API