

ARJUNARISHTA (PARTHADYARISHTA)

Monograph No. – 100001 ver 3.0

Issue No: 03

Amendment No : 00

Date of Issue: 16/03/2017

Amendment Date : --

Text Reference : Bhaishajya Ratnavali (Hrudroga) 33/75-77

Shelf Life: 10 years

Description

Dark brown coloured liquid, characteristic fermented odour, taste sweet, astringent & bitter.

pH

3.5 – 5.0

Specific Gravity

1.05 -1.15

Brix

22 – 35 %

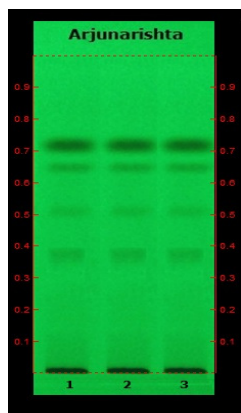
Alcohol content

7 – 11 % v/v

Thin Layer Chromatography Solvent system

Toluene : Ethyl acetate : Formic acid
(4 : 6 : 2)

Details



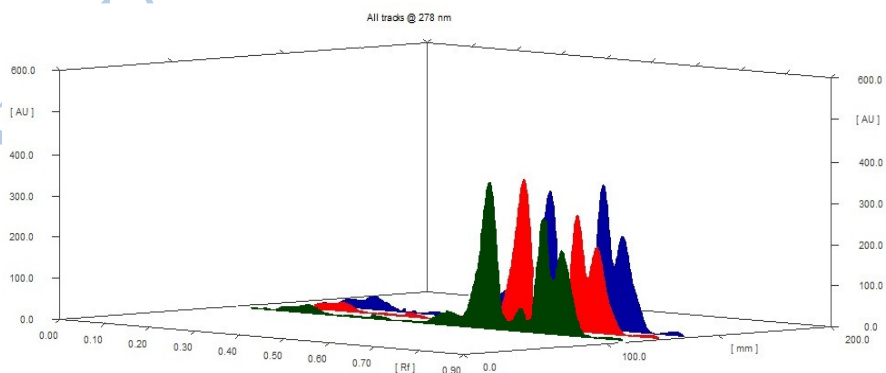
Distance travelled by solvent front – 90mm

Solvent of Extraction – Methanol

Total No. of Major spots – 4

Detection – Under UV at 254nm

Major Spots	Colour	Approx. Rf.
1	Gray	0.37
2	Gray	0.51
3	Gray	0.65
4	Black	0.72



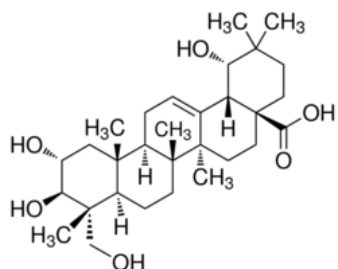
3D Peak Display of Arjunarishta at 278 nm

Confidential - photocopy prohibited

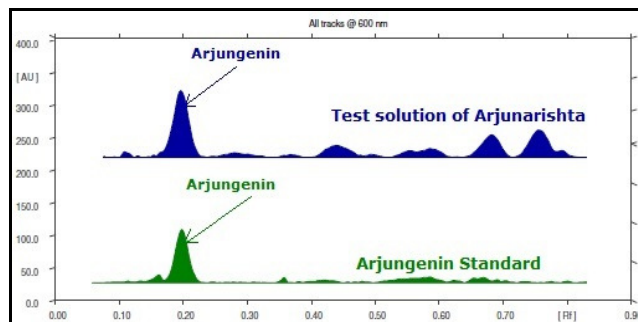
Note : † : These extra tests can be performed on every batch at extra cost. Tests can be ascertained on request.

HPTLC Profile[†]

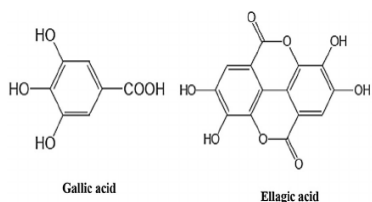
i) Arjungenin



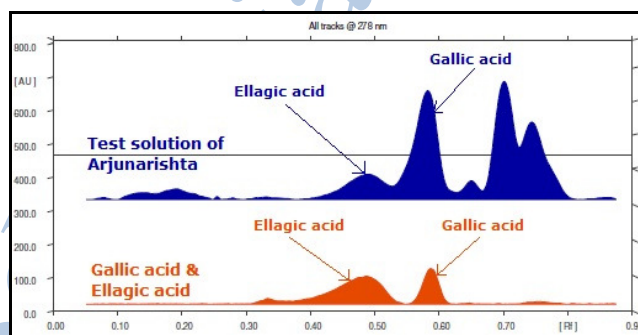
When examined in the range of 400 nm to 700 nm, the test solution shows absorption maxima at about 600 nm corresponding with Arjungenin standard



ii) Total Polyphenols (as Gallic acid & Ellagic acid)



When examined in the range of 200 nm to 400 nm, the test solution shows absorption maxima at about 290 nm for Gallic acid & 278 nm for Ellagic acid corresponding with Gallic acid & Ellagic acid standard.



Heavy metal

Lead (Pb)	NMT 10 ppm
Mercury (Hg)	NMT 1 ppm
Arsenic (As)	NMT 3 ppm
Cadmium (Cd)	NMT 0.3 ppm
E. coli ⁺	Absent/g
P. aeruginosa ⁺	Absent/g
Salmonella sp. ⁺	Absent/g
Staphylococcus sp. ⁺	Absent/g
Total Microbial plate count (TPC)[†]	NMT 10 ⁵ c.f.u./g
Total Yeast & Mould ⁺	NMT 10 ³ c.f.u./g
Pesticide Residue ⁺ (OC+OP)	Complies as per API
Aflatoxins B1,B2,G1,G2 ⁺	Complies as per API

Confidential - photocopy prohibited

Note : [†] : These extra tests can be performed on every batch at extra cost. Tests can be ascertained on request.